

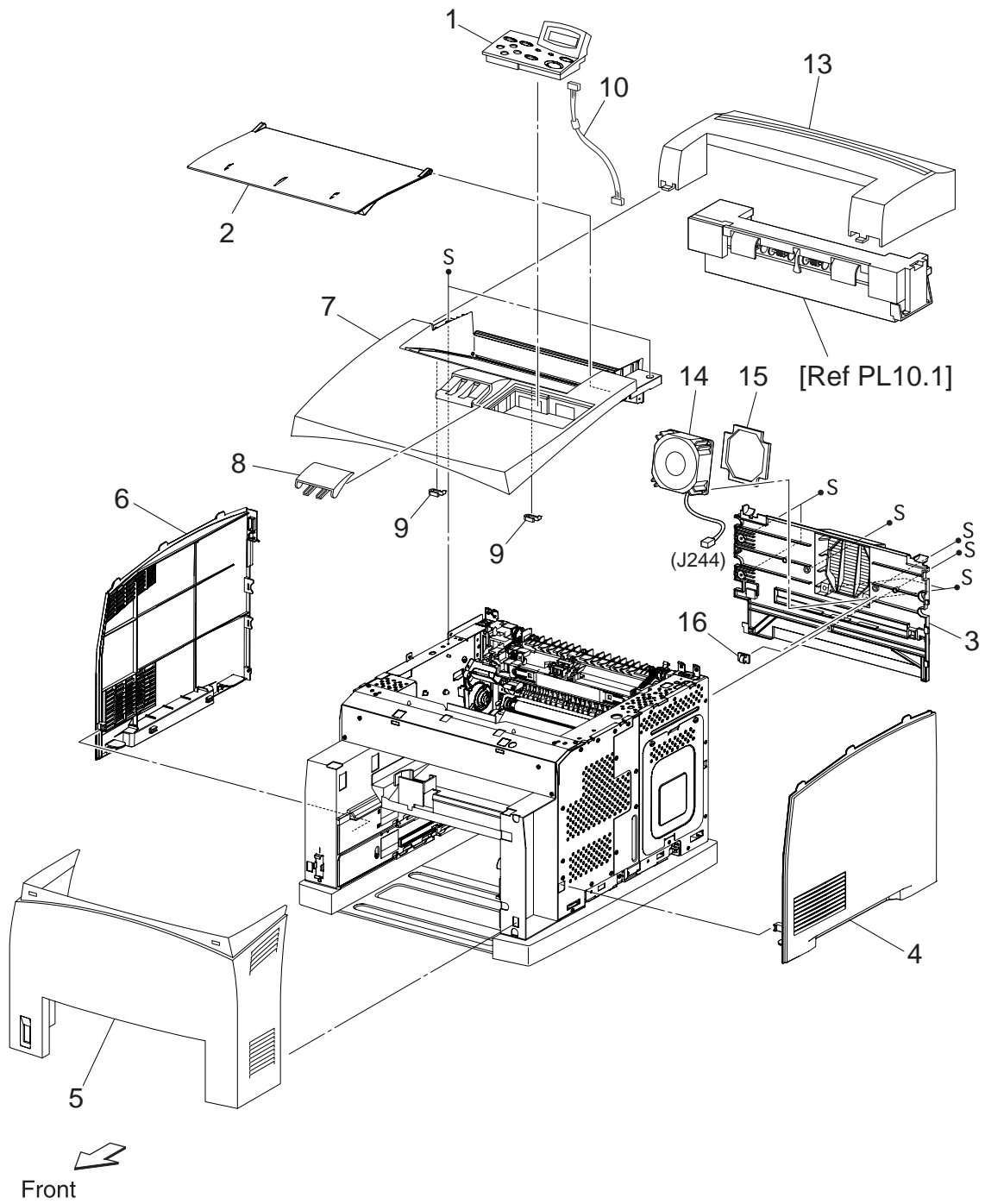
# OEL Spare Parts Drawing

B6500/ES6150

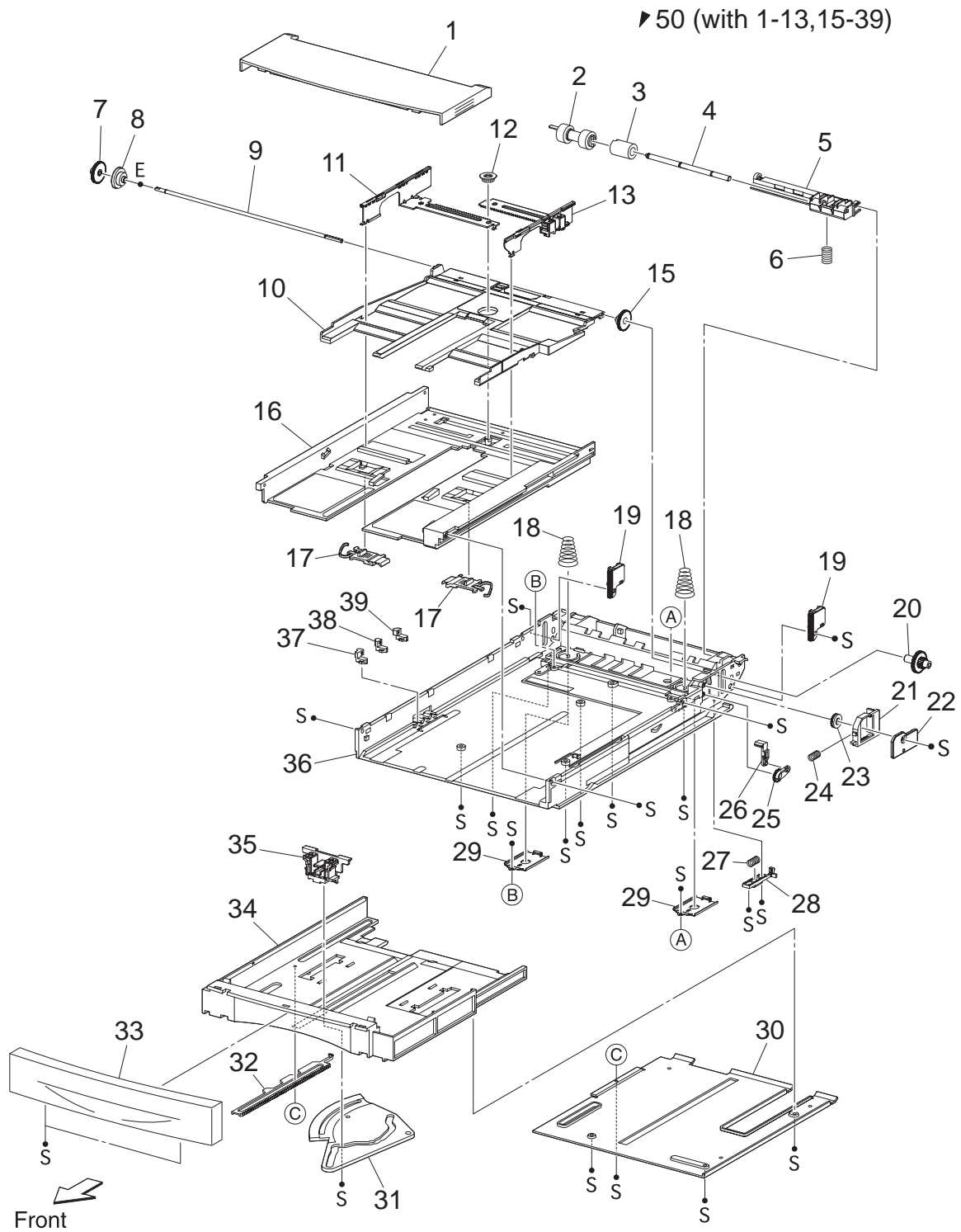


Revision 1

PL1.1 Cover [Illustration]

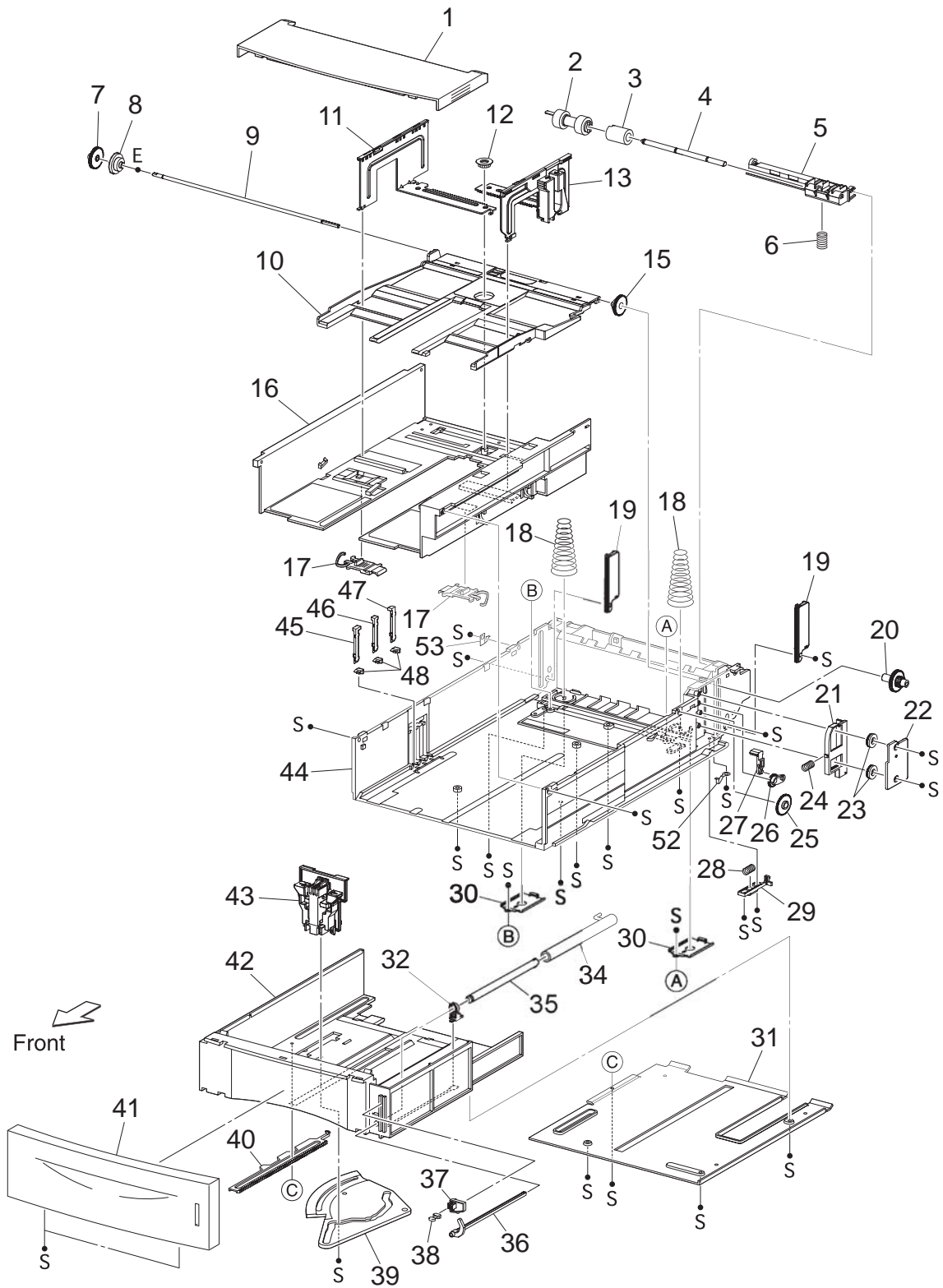


PL2.1 150 Paper Cassette [Illustration]

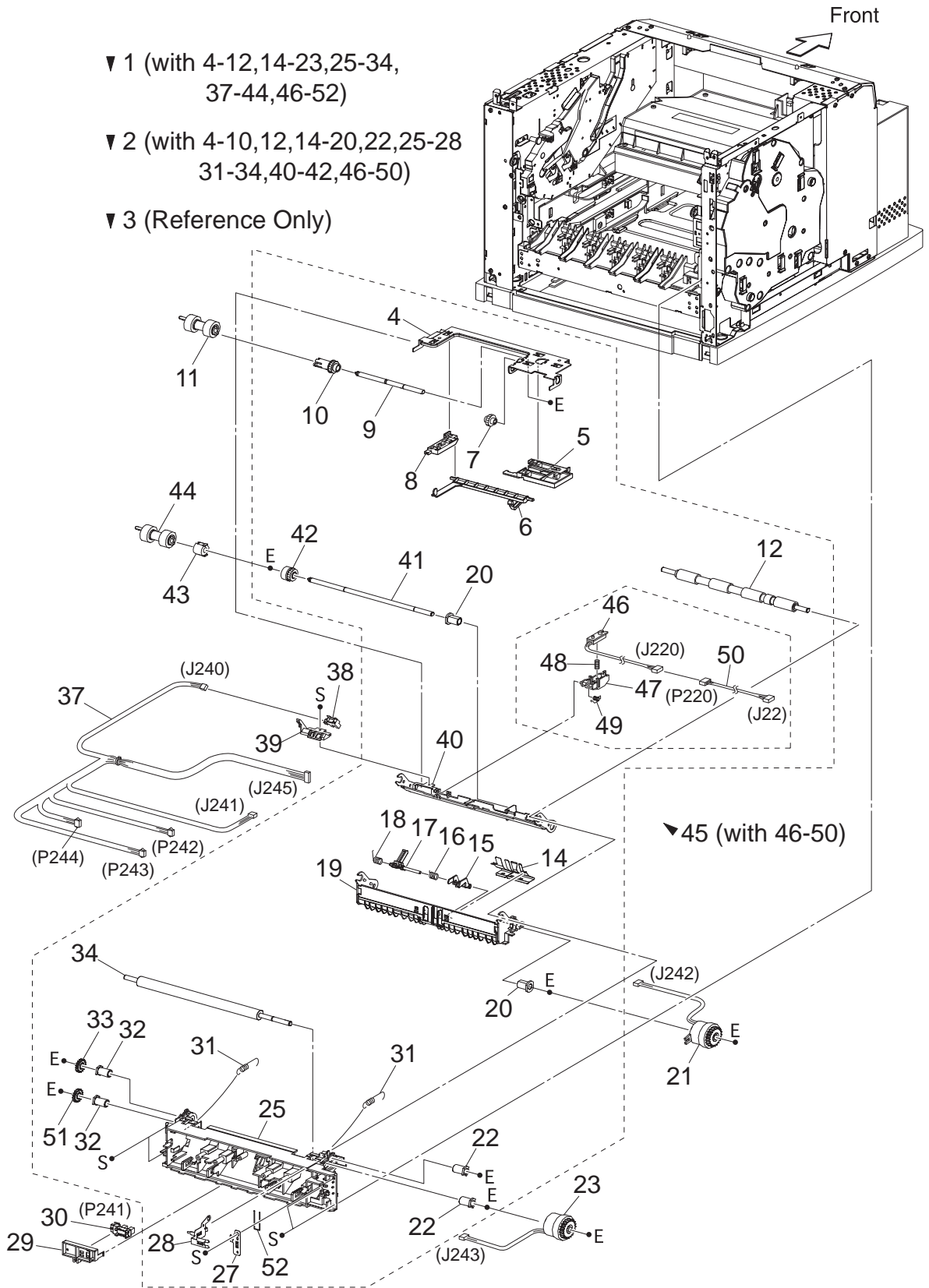


PL4.1 550 Paper Cassette [Illustration]

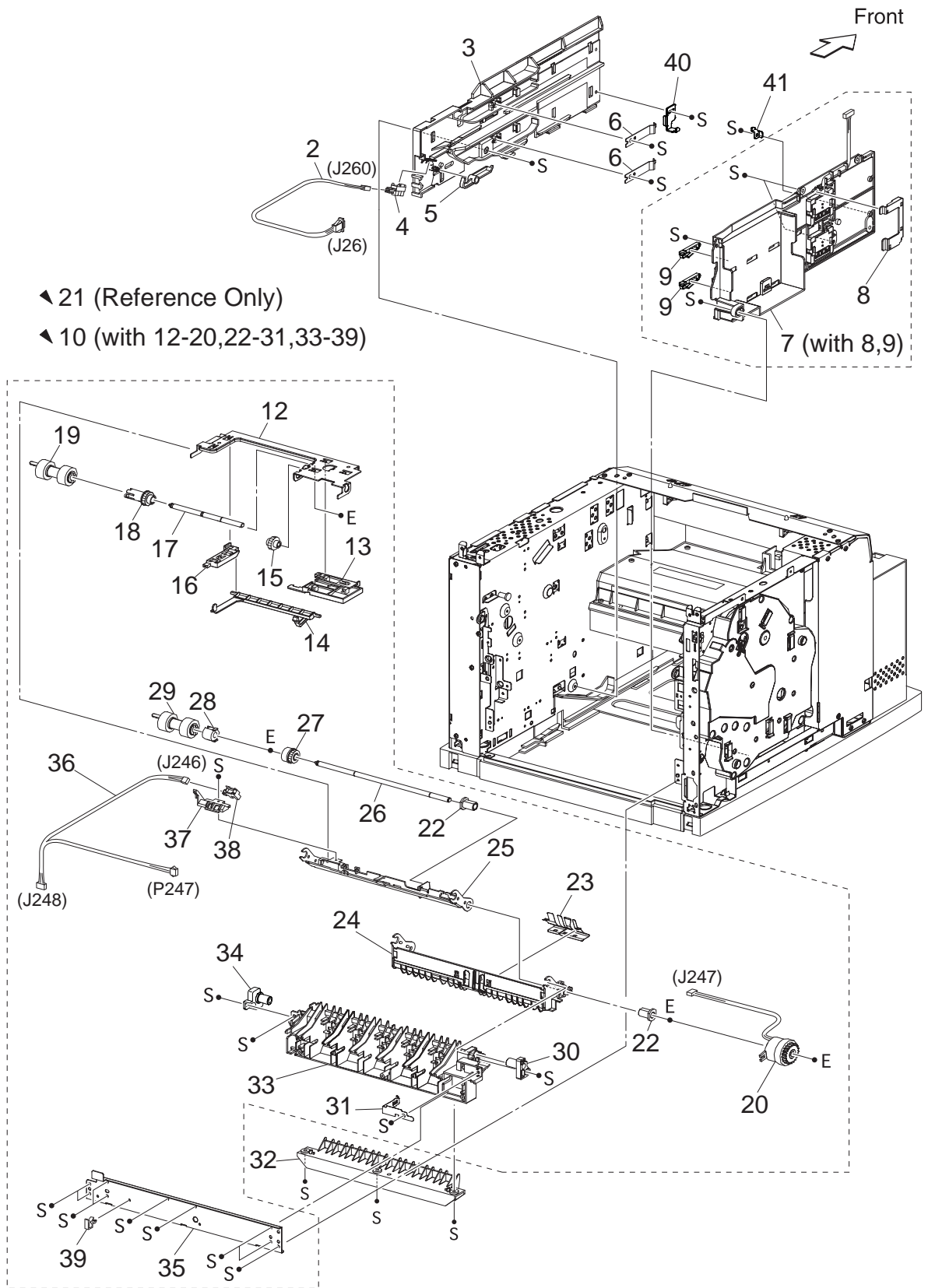
▼ 50 (with 1-13,15-32,34-48,52,53)



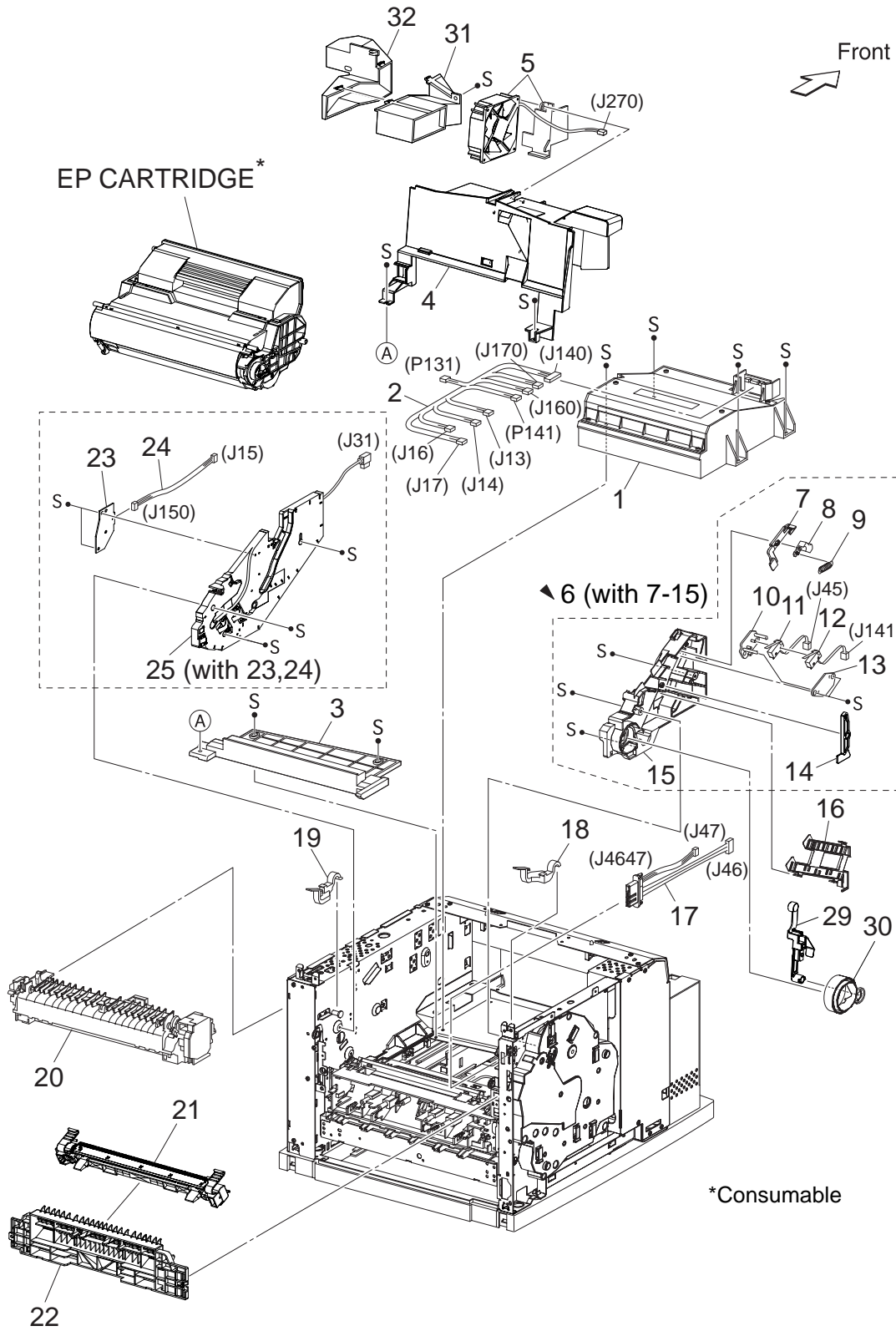
PL5.1 150 Paper Feeder [Illustration]



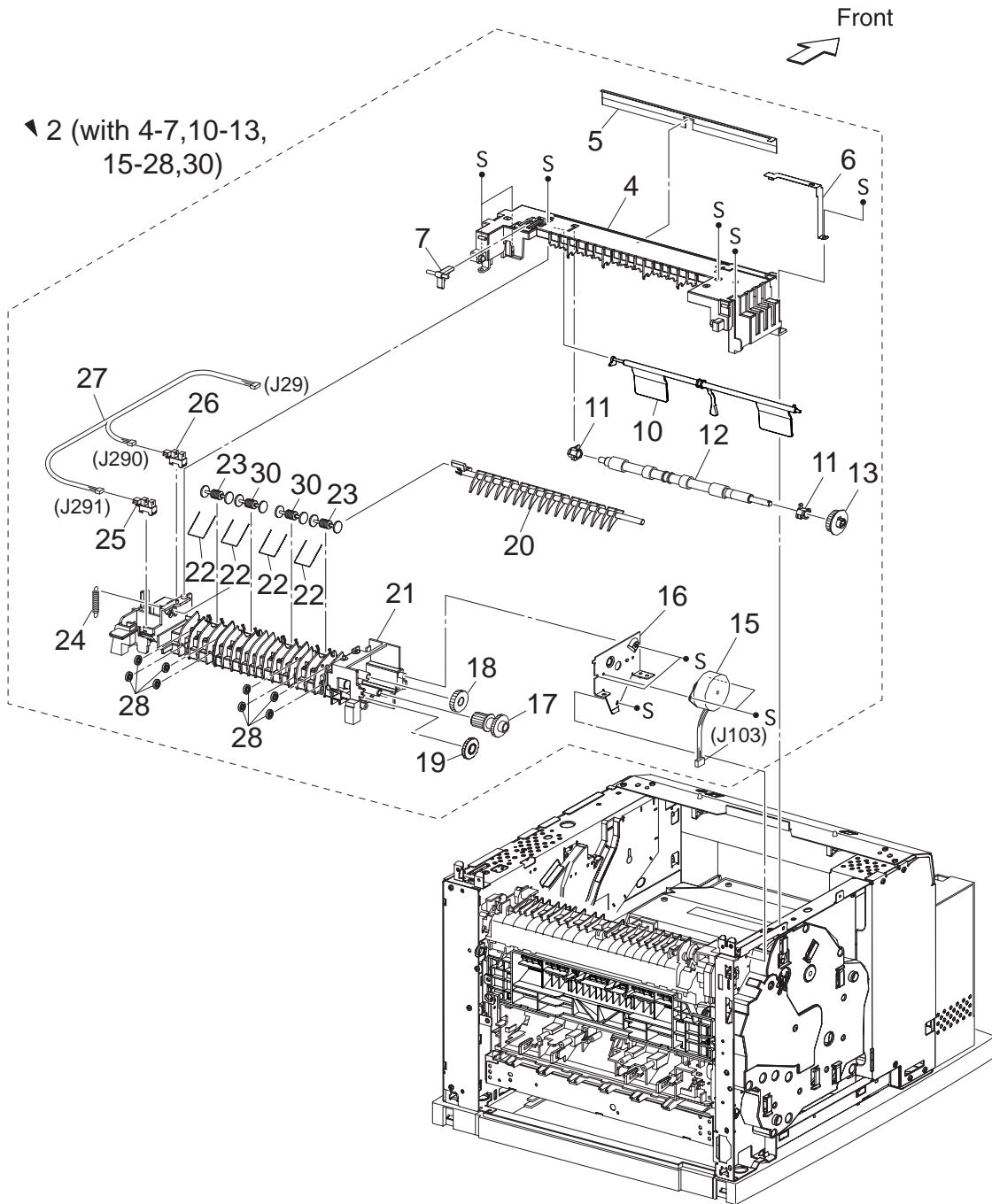
PL7.1 550 Paper Feeder [Illustration]



PL8.1 Xero [Illustration]

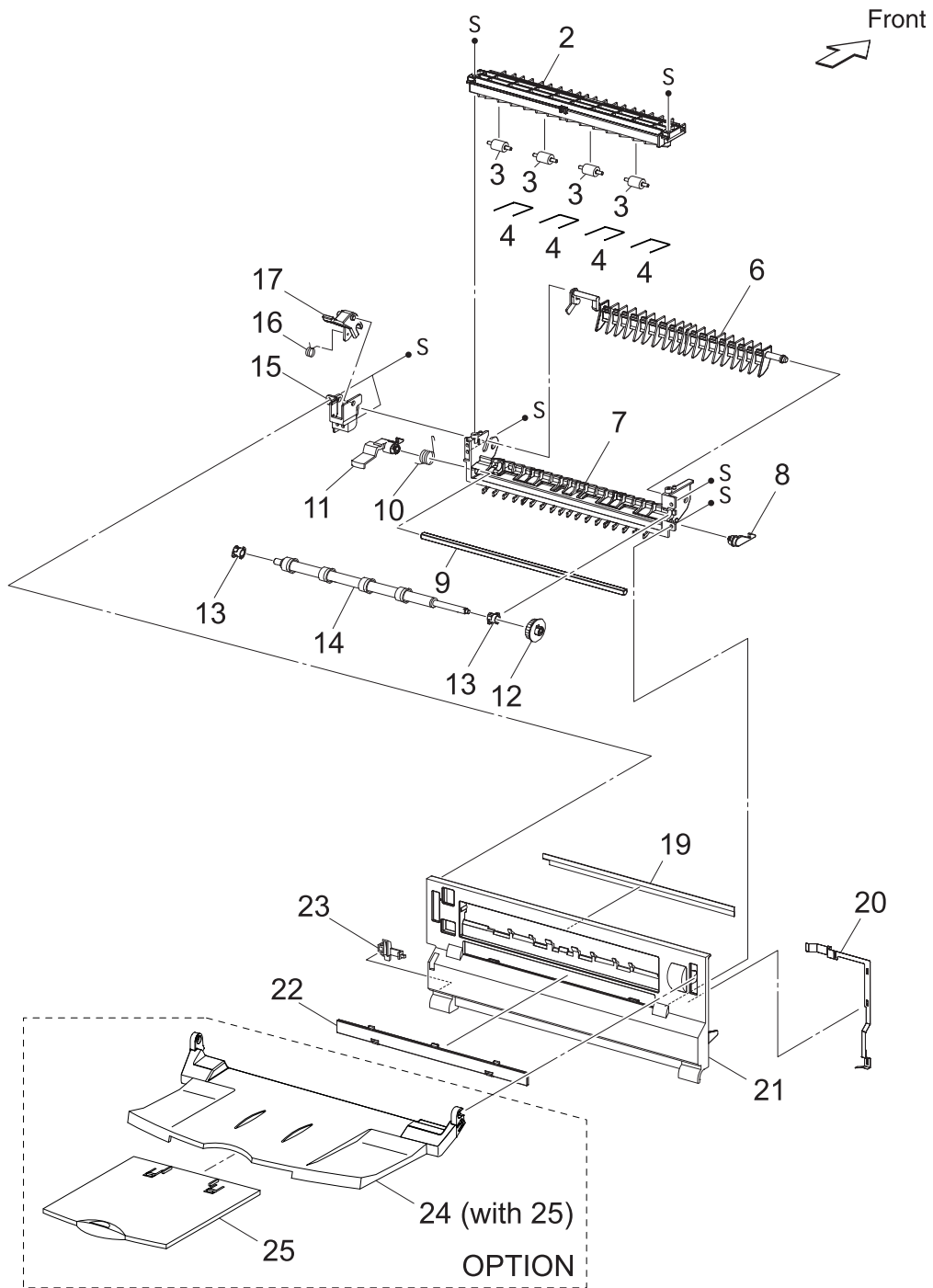


PL10.1 500 Paper Exit (1/2) [Illustration]

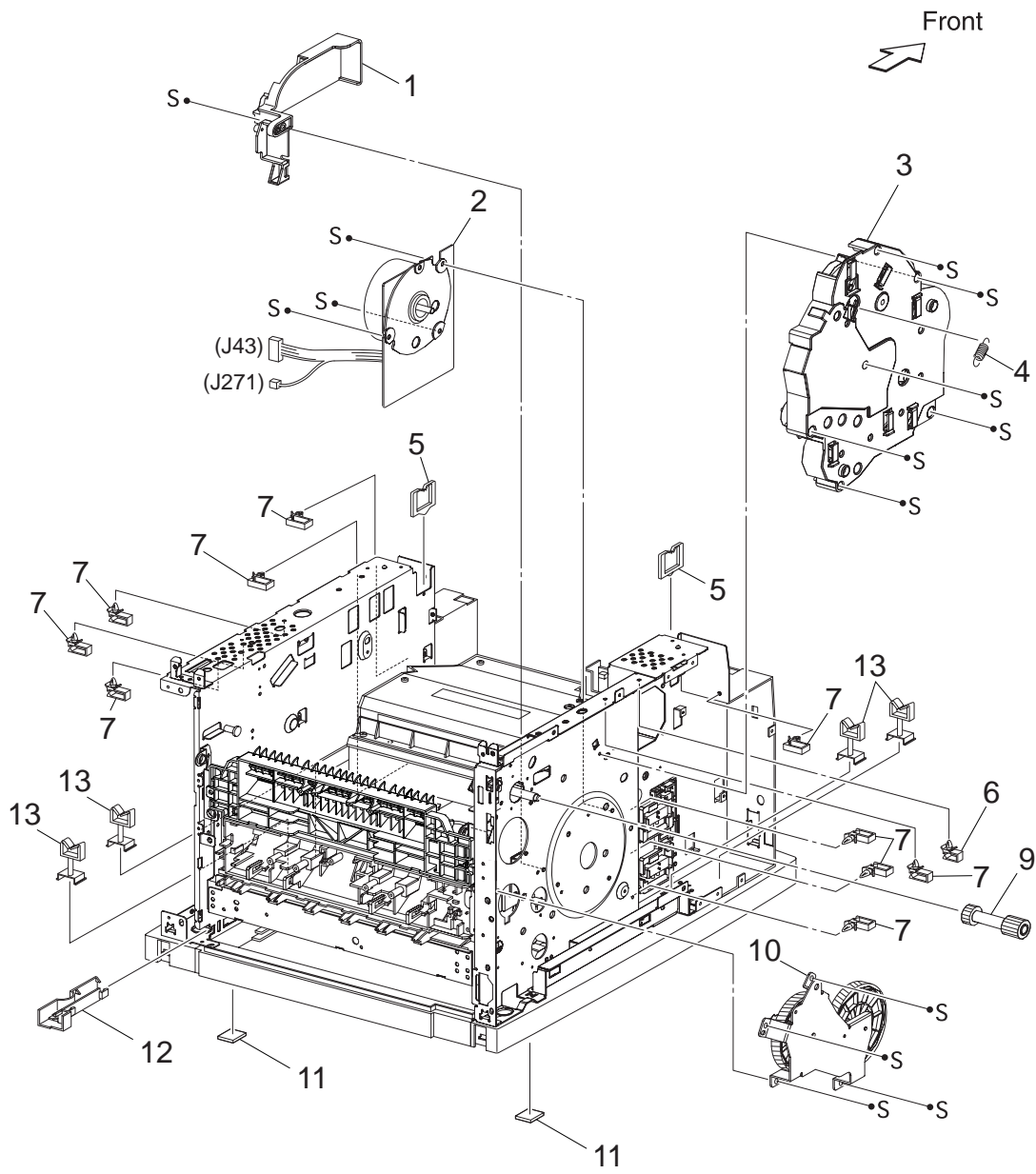




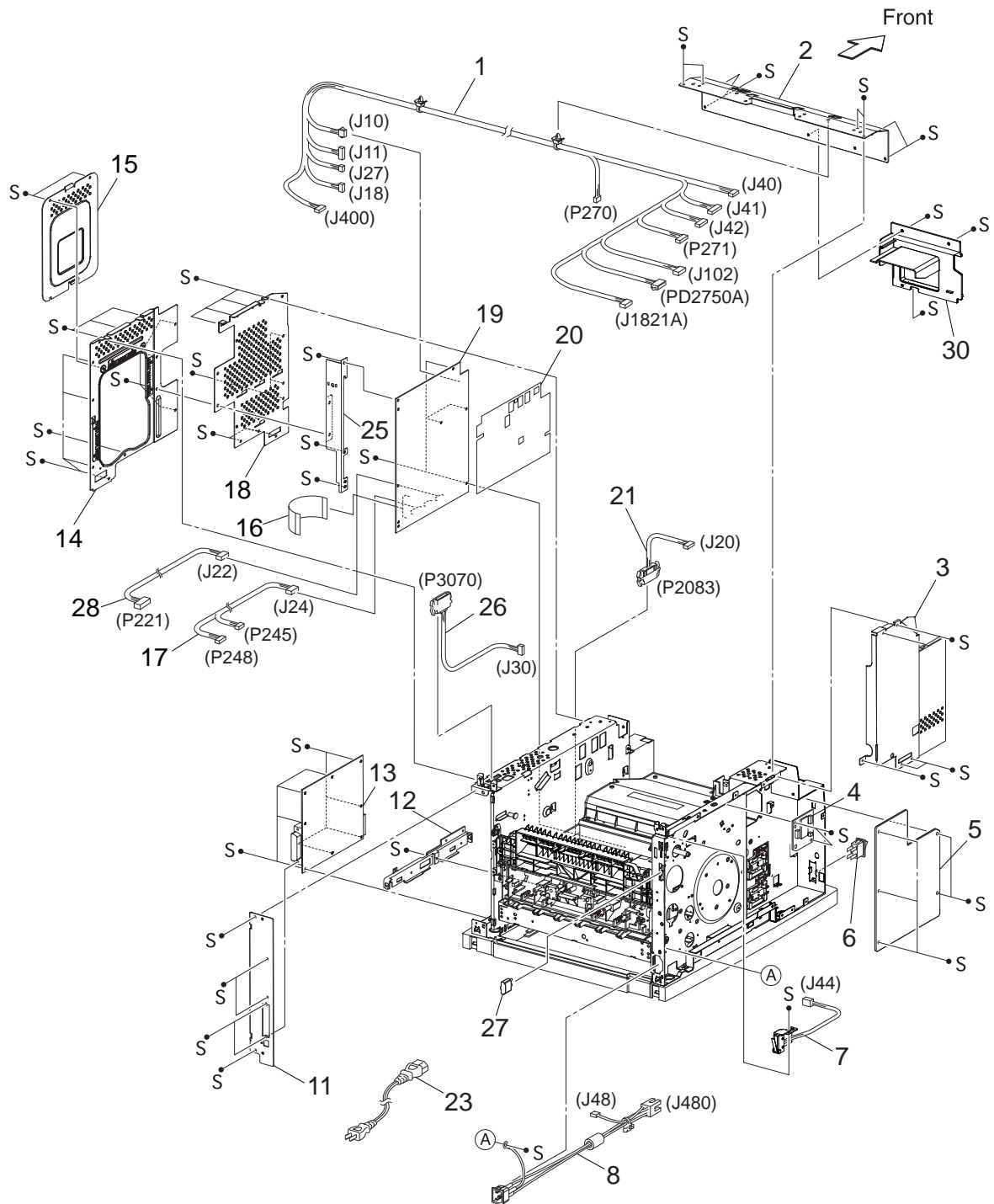
PL10.2 500 Paper Exit (2/2) & Option Face Up Tray [Illustration]



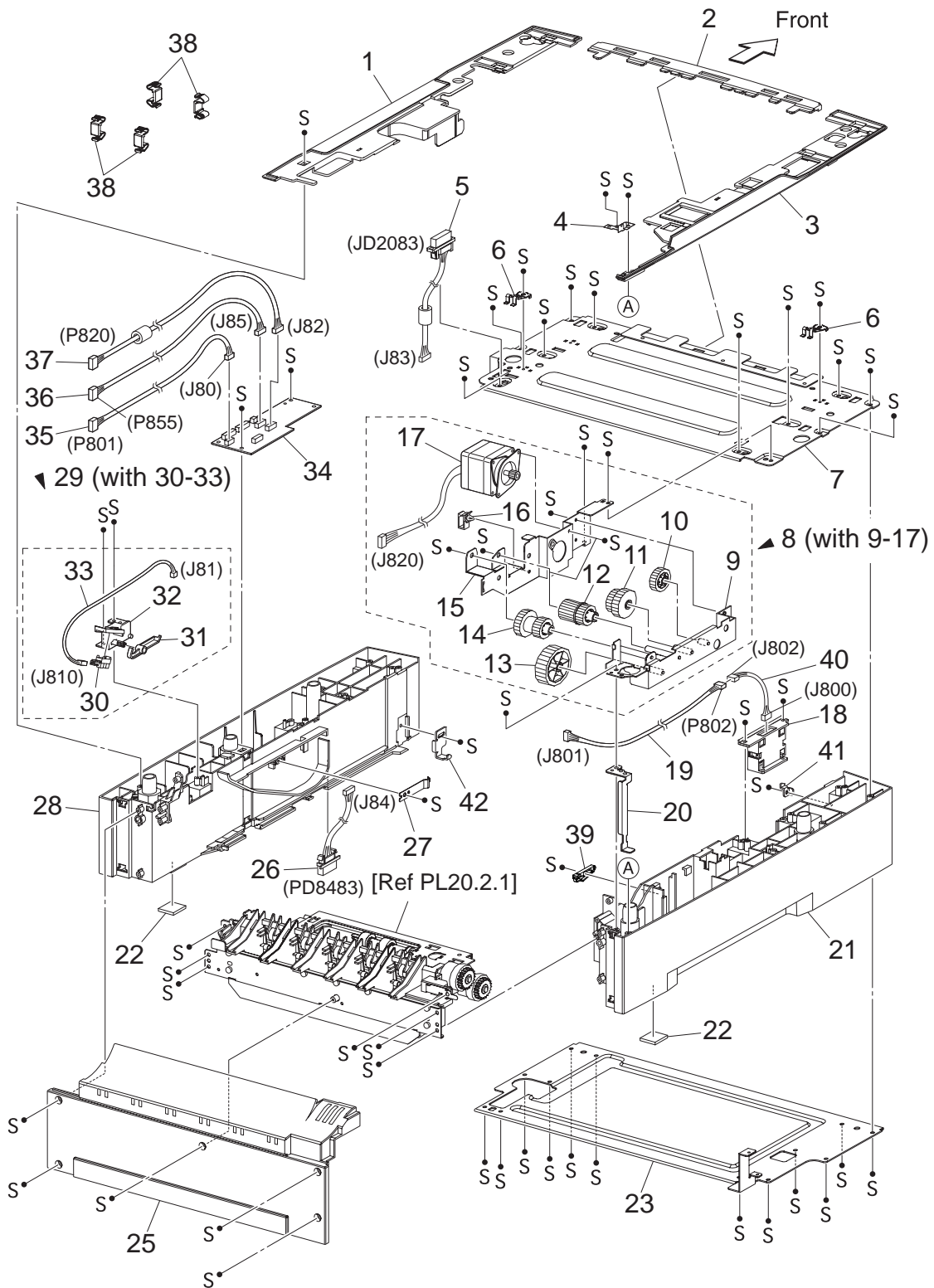
# PL11.1 Frame & Drive [Illustration]



PL12.1 Electrical [Illustration]



PL20.1 Option 550 Paper Feeder (1/2) [Illustration]



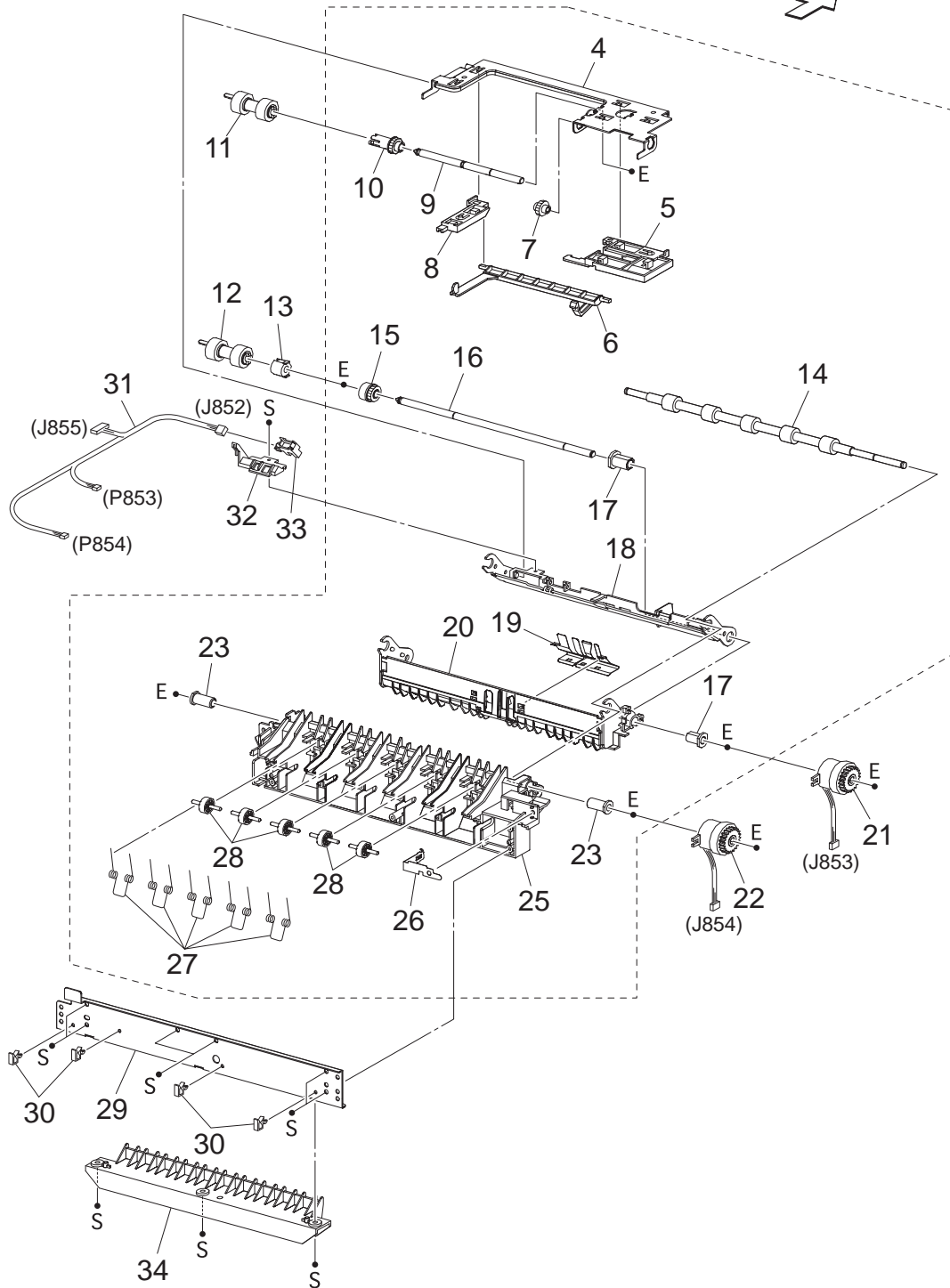
PL20.2 Option 550 Paper Feeder (2/2) [Illustration]

▼ 1 (with 4-23,25-34)

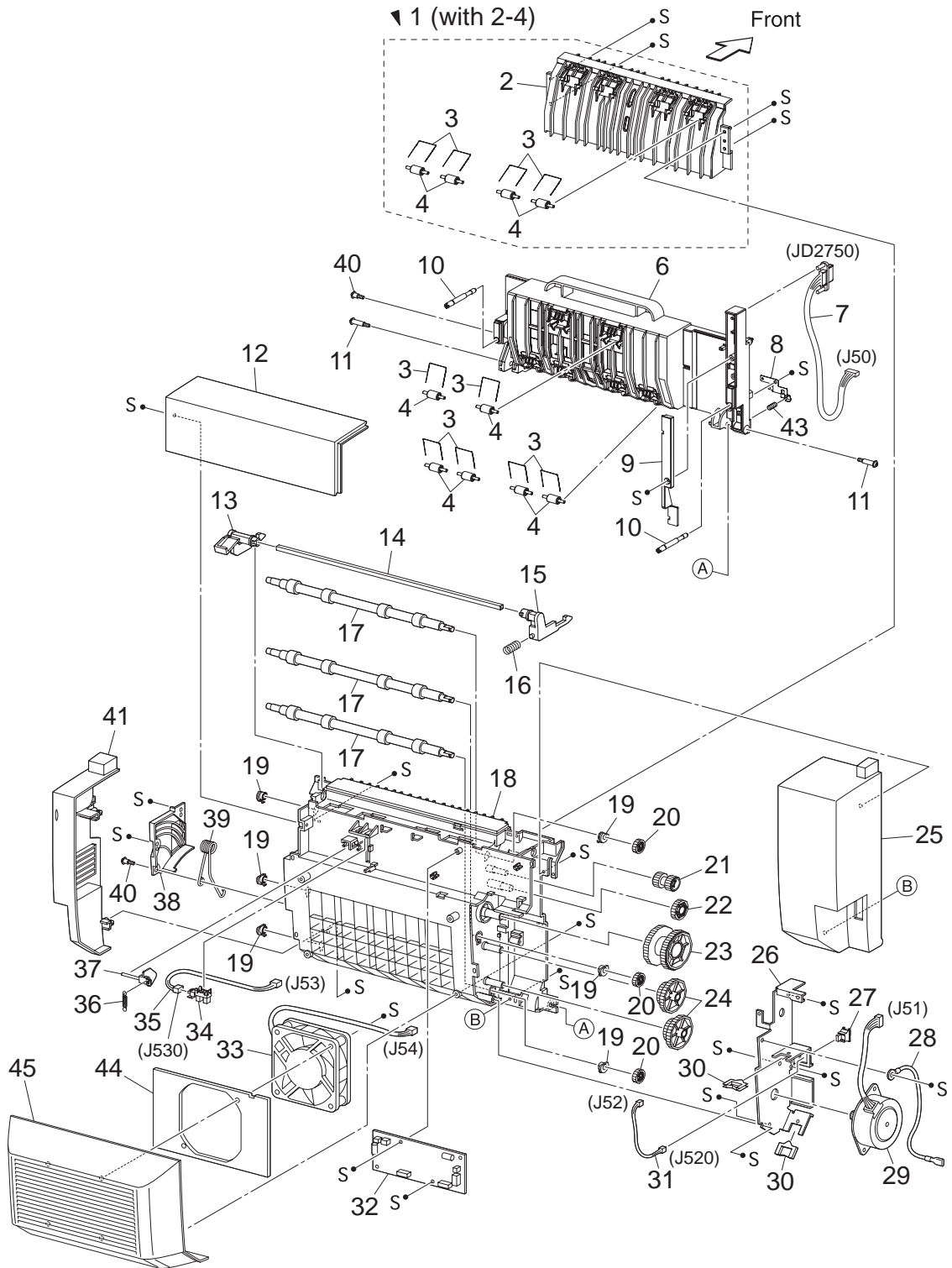
▼ 2 (Reference Only)

▼ 35 (with 4-10,14-20,23,25-28)

Front  
➔



PL21.1 Option Duplex [Illustration]



PL23.1 Option OCT [Illustration]

