

OEL Spare Parts Drawing

B930/ES9130



Revision 1

Parts Identification

- The Item Numbers in the illustrations have the corresponding Item Numbers in the list.
- The notation of PL "X.Y.Z" is composed of the plate (PL), item "X.Y", and parts "Z".
- The alphabet characters in the illustrations represent screws and clips as follows:
"S": screw, "E": E-ring, "KL": KL clip, "C": C-ring, and "N": nut
- "▼" mark in the illustrations are attached to items indicating assembly parts in the illustrations.
- Encircled alphabetical figures in the illustrations indicate interrupted leader lines. Same characters in the illustrations represent lines to be connected.
- The mark "(with 2-5)" attached to assembly parts on the illustrations and lists represents that the items "2, 3, 4, and 5" of that plate are contained and the mark "(with 2-5, PL6.1.1)" represent that the item "2, 3, 4, and 5" of that plate and the item "1" of the plate "6.1" are contained.
- The mark "[Same PLX.Y.Z]" attached to parts in the illustrations and lists represents that the parts is the same as the parts of the item "Z" of the plate "X.Y".
- The mark "*" attached to parts in the list represents "Note" or "Reference" about parts that are contained in the same page.
- "HIGH ASSY" in the list represent the high level assembly containing a specific part/s.
- PL numbers in this document correspond to the part numbers in the accompanying Excel Parts List spreadsheet.

NOTE For spare parts, refer to the "Spare parts list" which is issued separately.

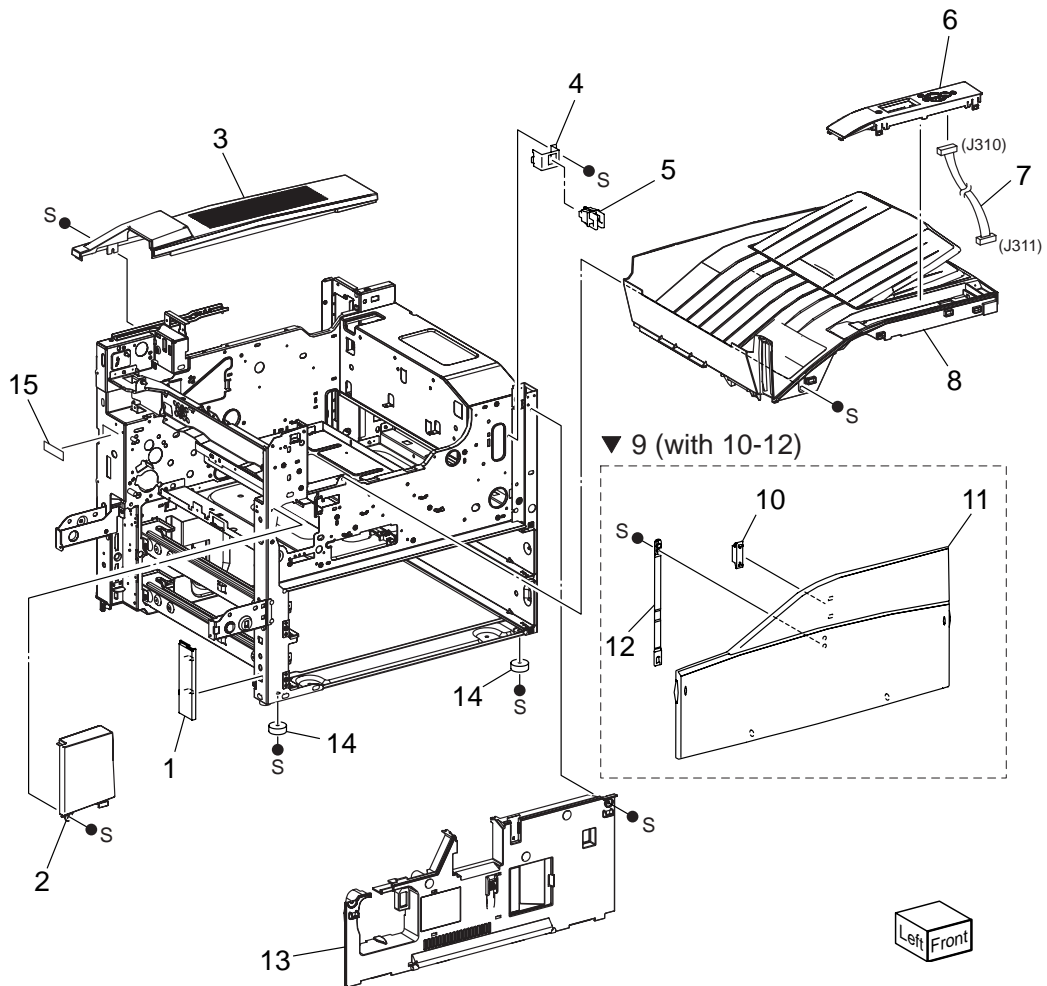
NOTE For the connector (P/J), parts such as harness, wire, etc. in the list, refer to "Chapter 7, Electric wiring"

NOTE It should be noted that configuration of parts may be different or some parts are not used depending on specifications of OEM.

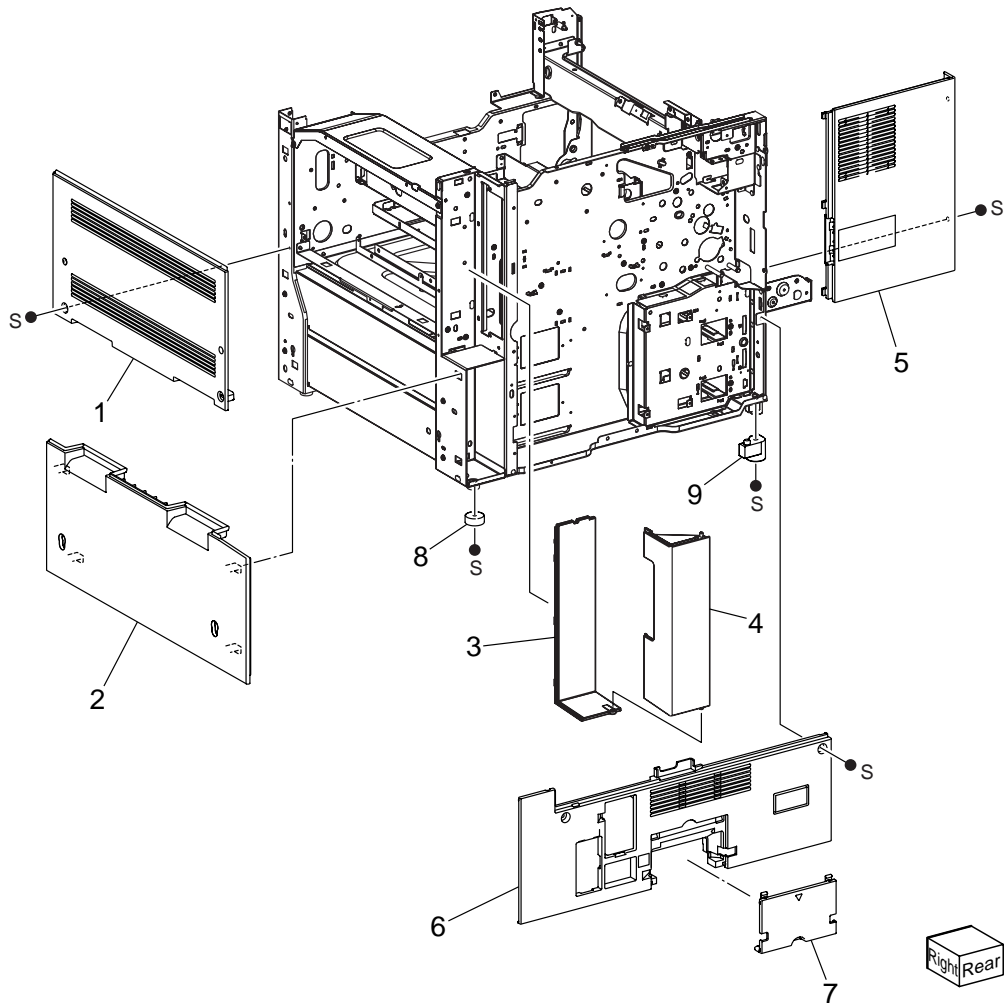
Engine

Covers

PL 1.1 Covers (1/2)

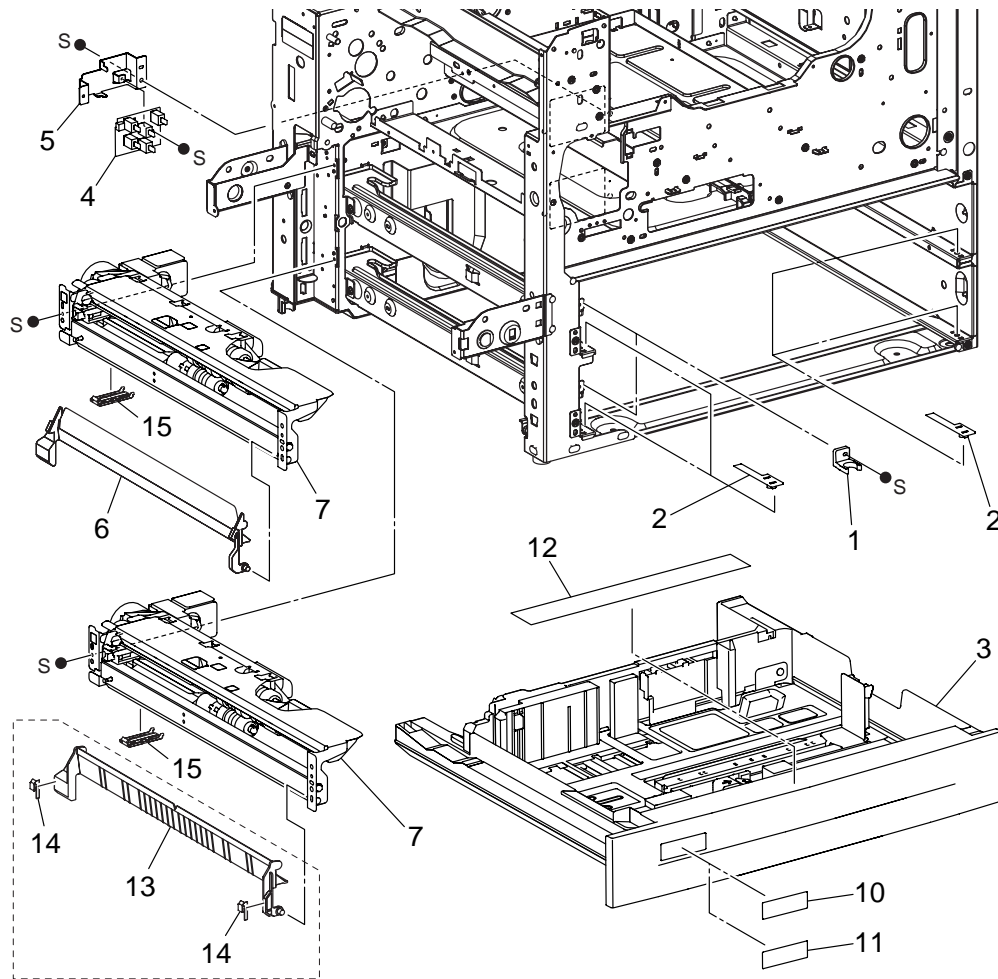


PL 1.2 Covers (2/2)



2 Tray & Feeder

PL 2.1 Tray (1/2) & Feeder (1/2)

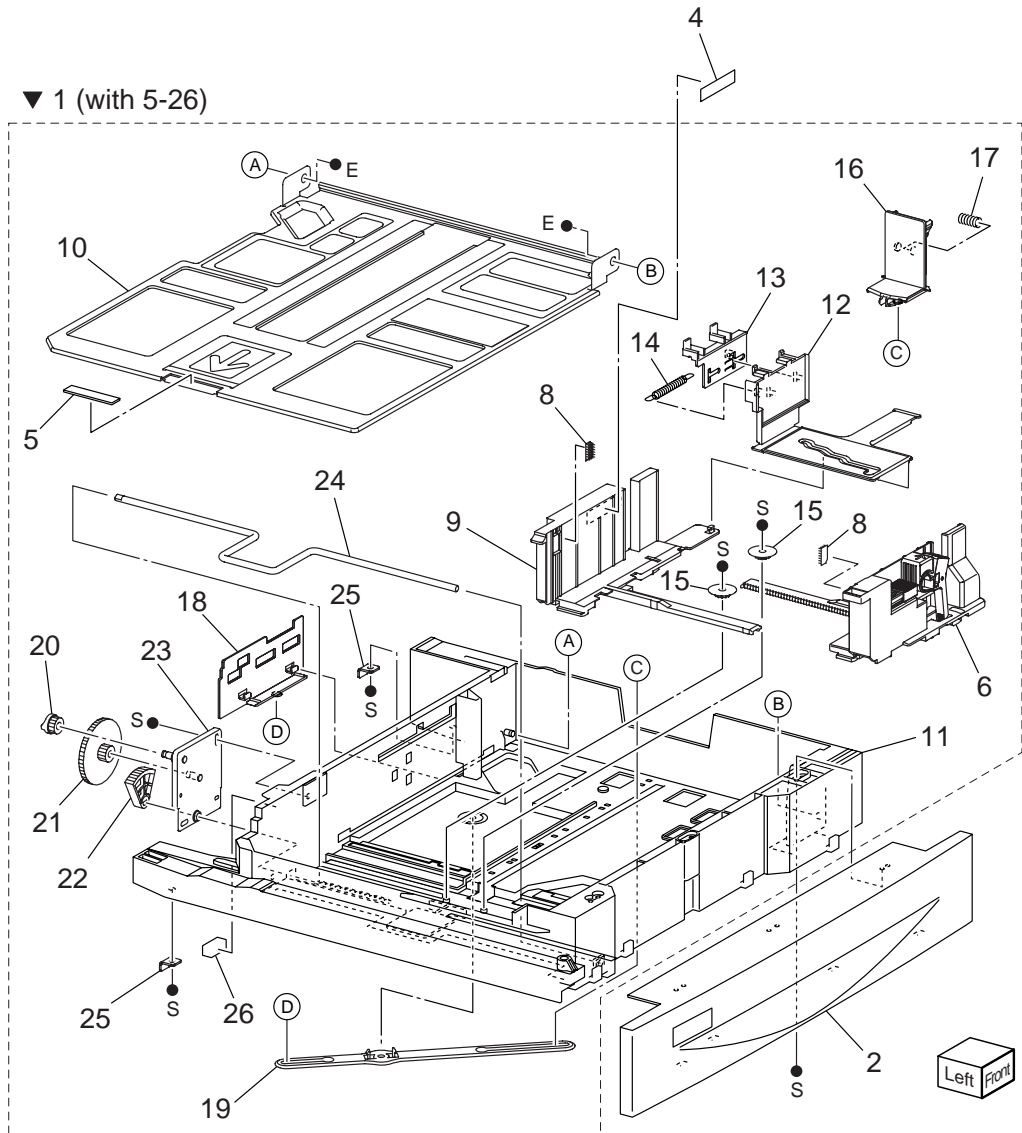


▼ 9 (with 13,14)

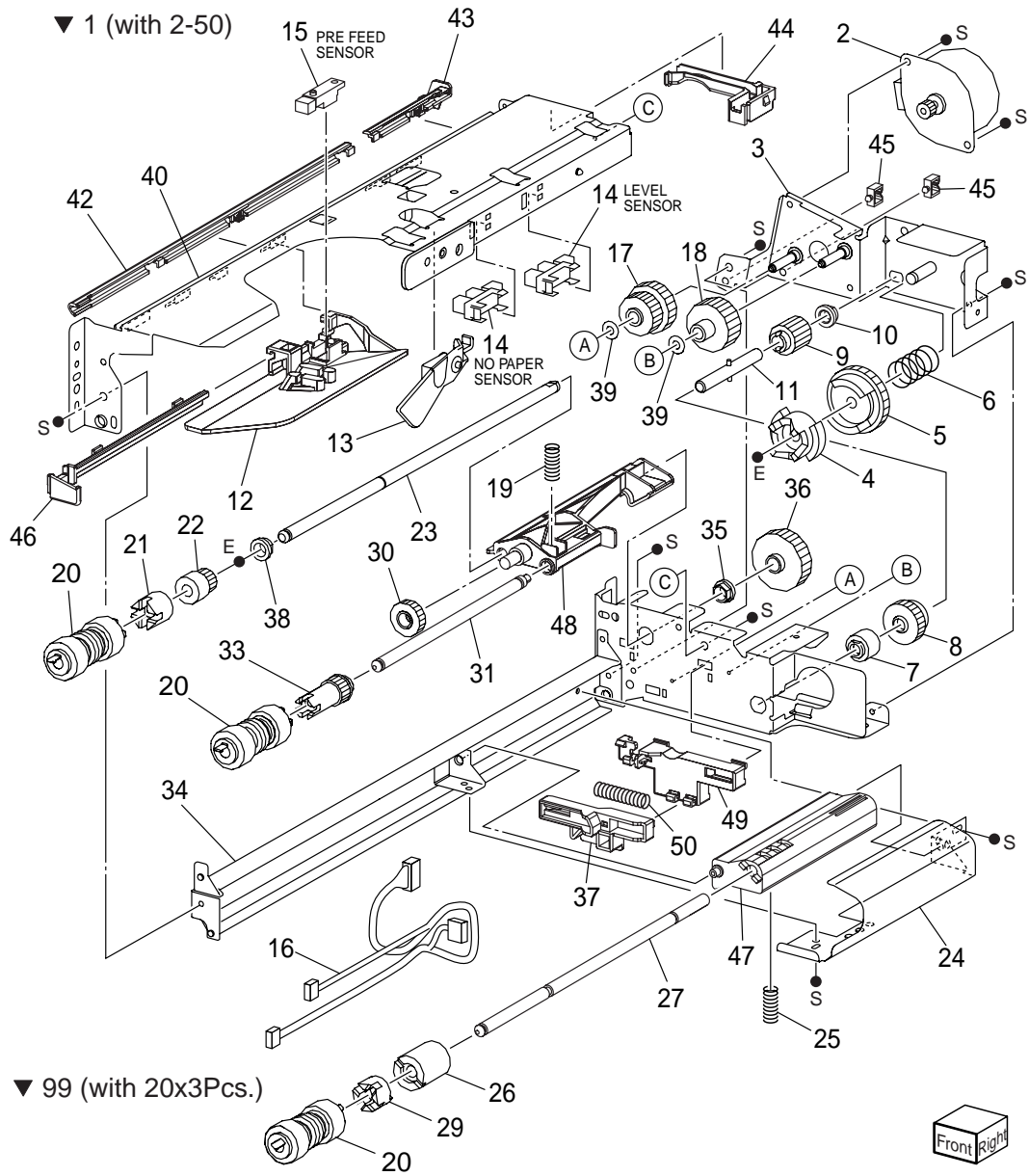
▼ 99 (with 3, 10, 11, 12, PL20.2.2, PL20.2.3)



PL 2.2 Tray (2/2) illustration

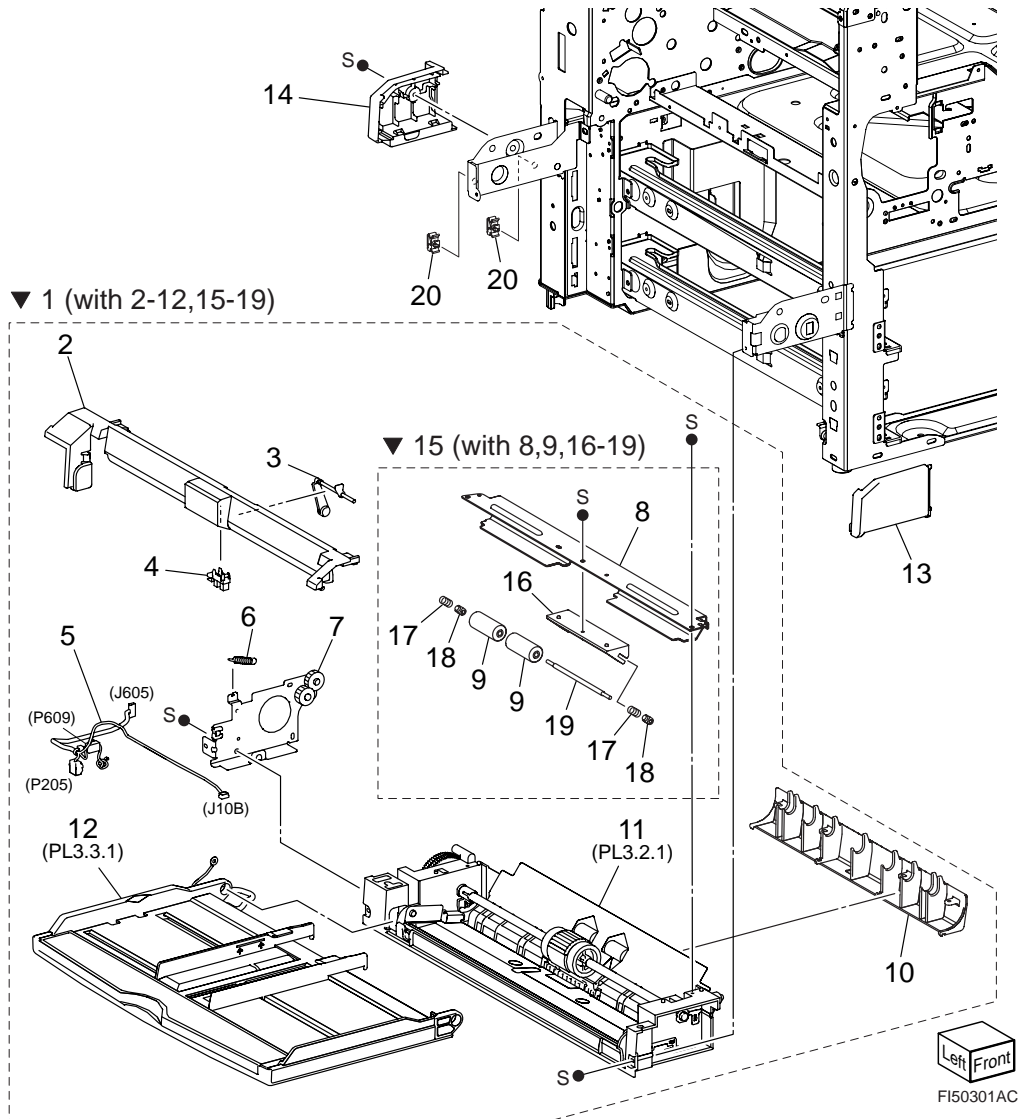


PL 2.3 Feeder (2/2)



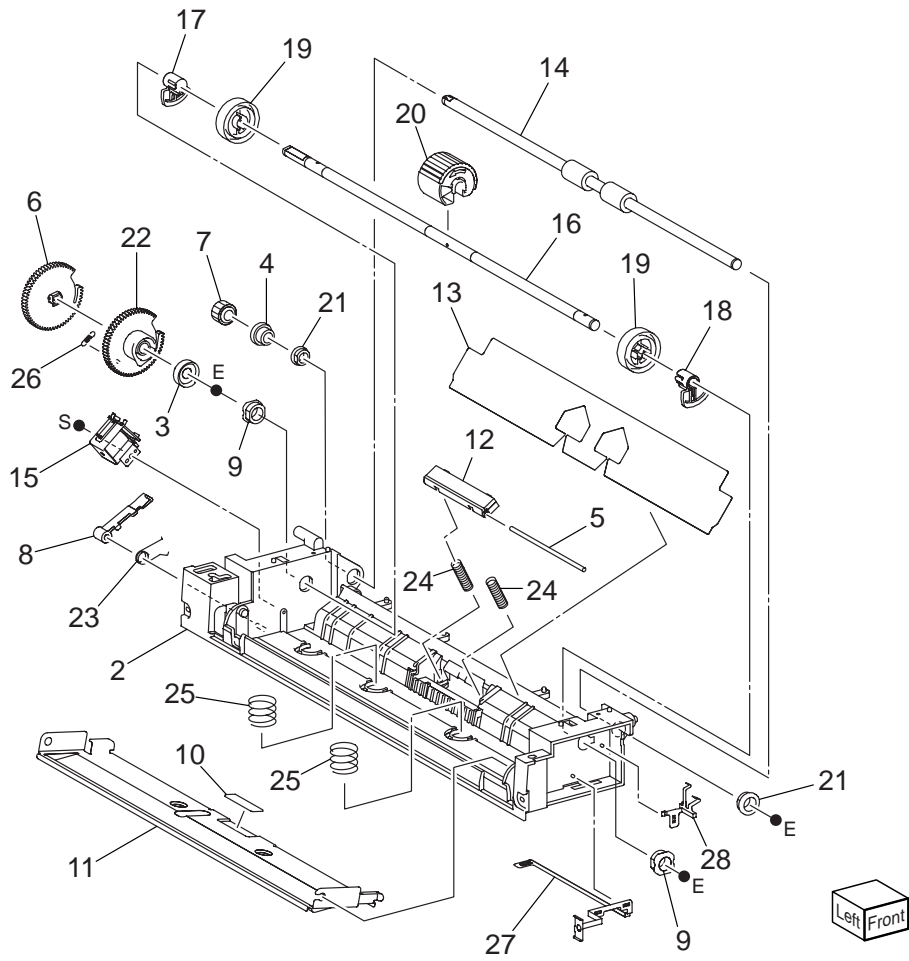
3 MPF Assembly

PL 3.1 MPF Assembly



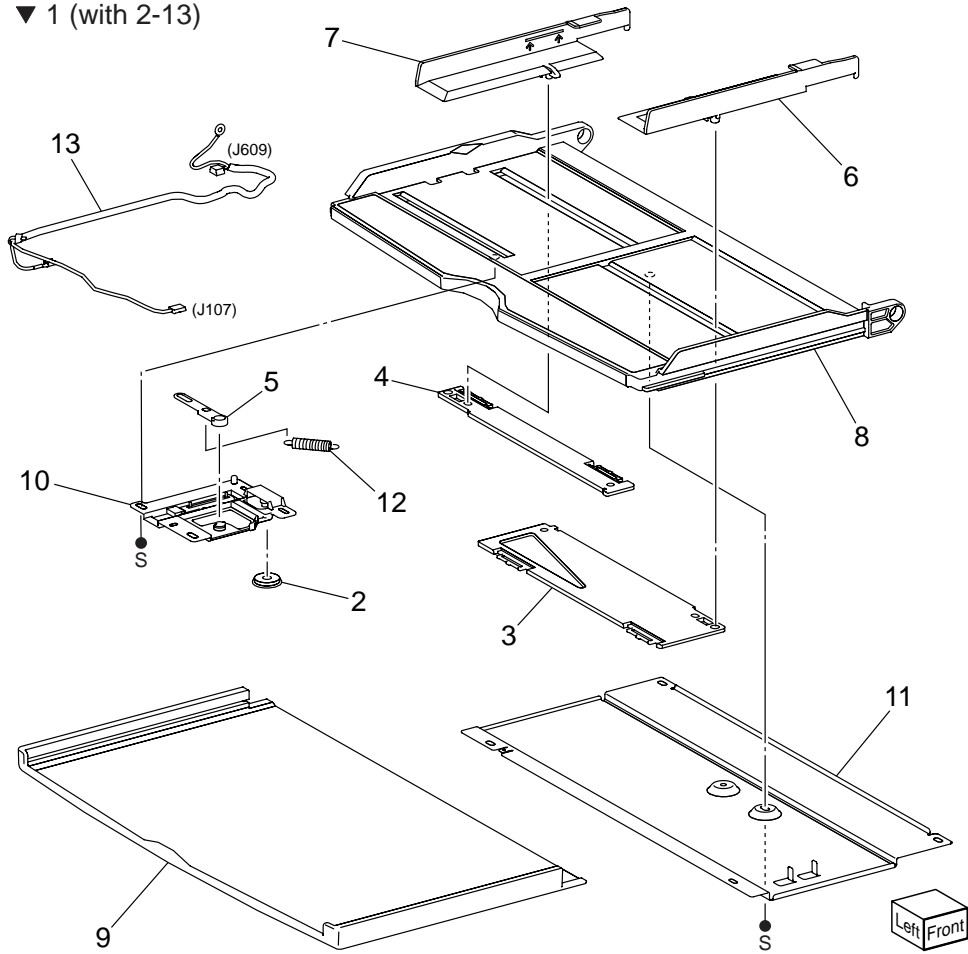
PL 3.2 MPF Lower Frame Assembly

▼ 1 (with 2-28)

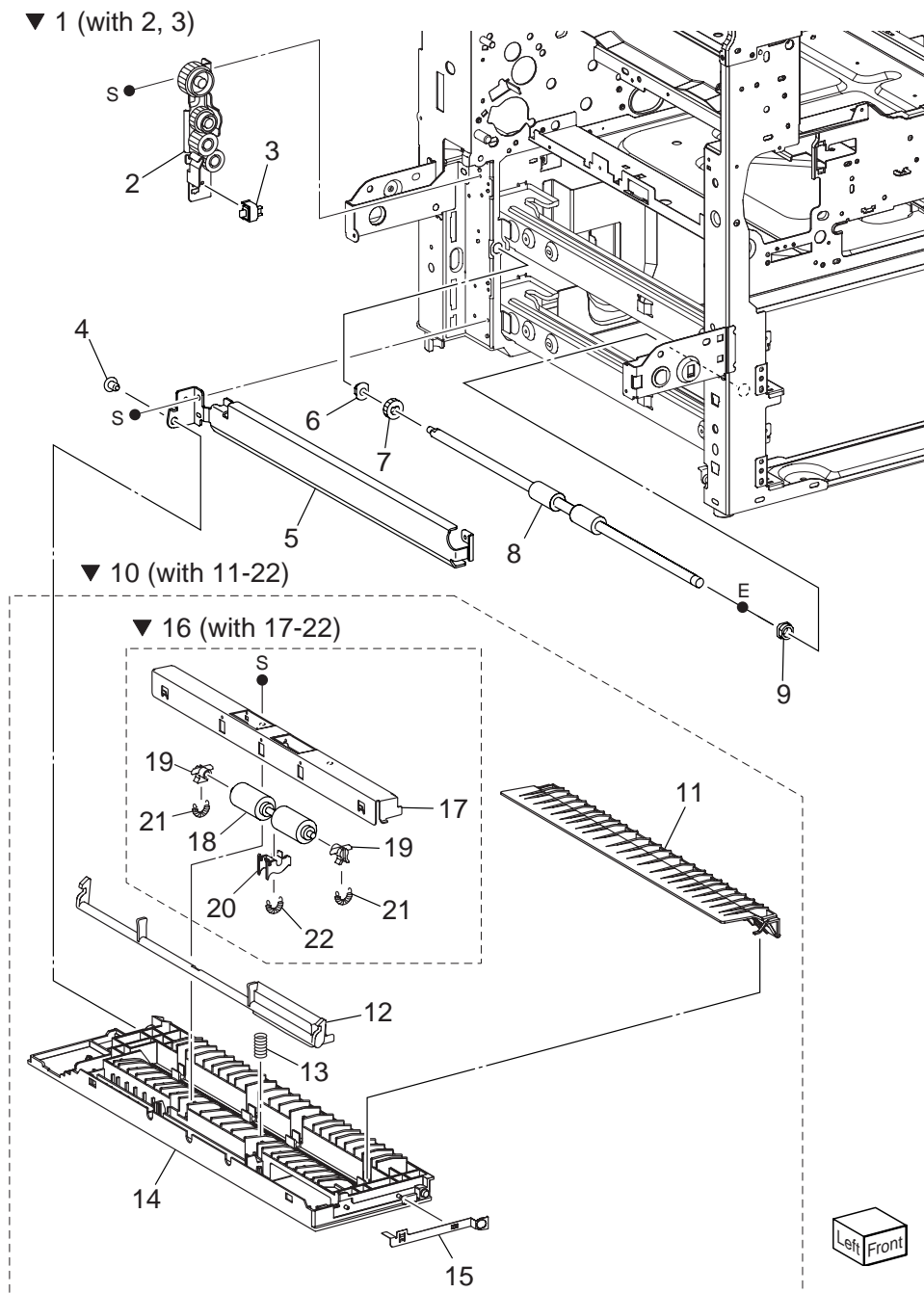


PL 3.3 MPF Tray Assembly

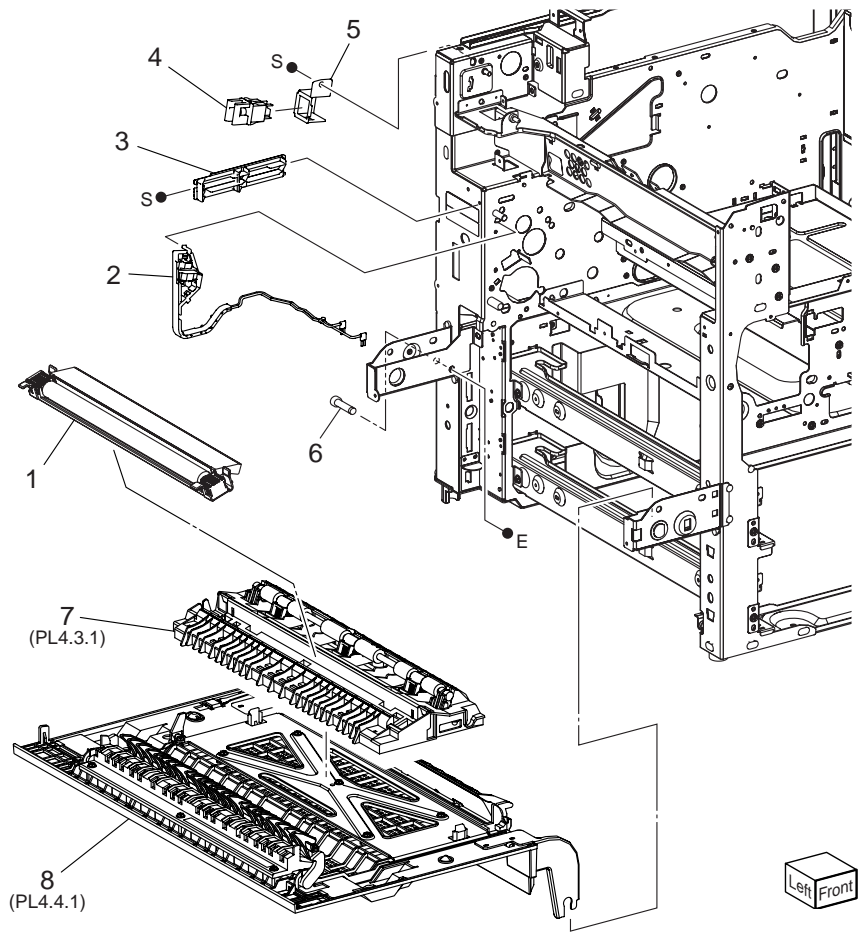
▼ 1 (with 2-13)



4 L/H Lower PL 4.1 L/H Lower

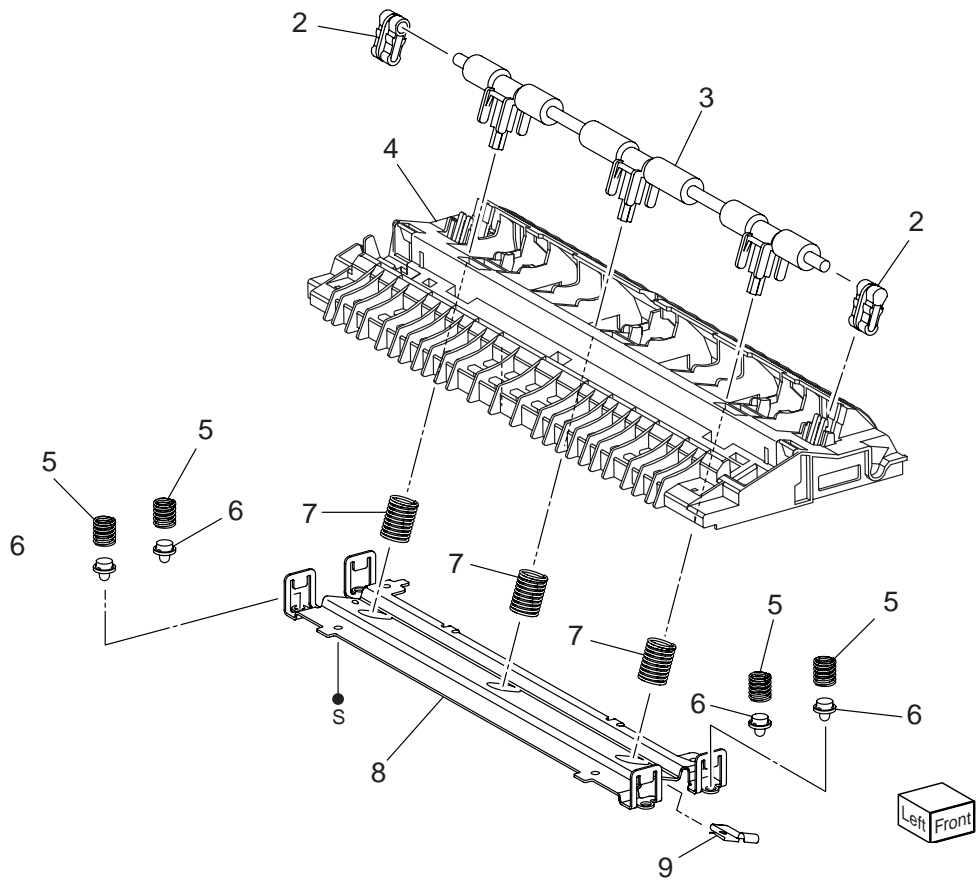


PL 4.2 L/H Upper



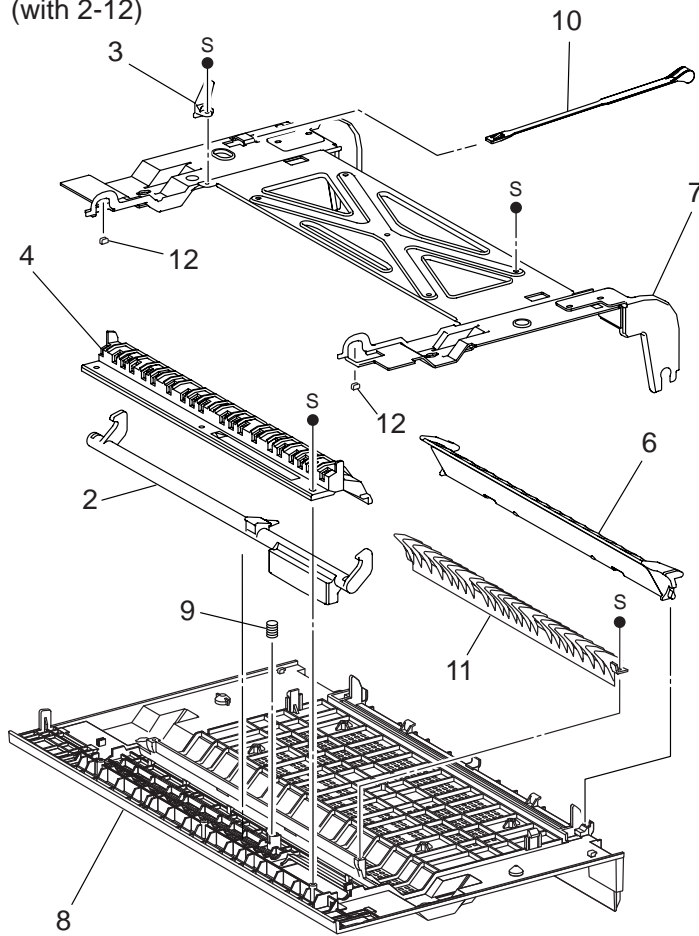
PL 4.3 L/H Chute Assembly illustration

▼ 1 (with 2-9)

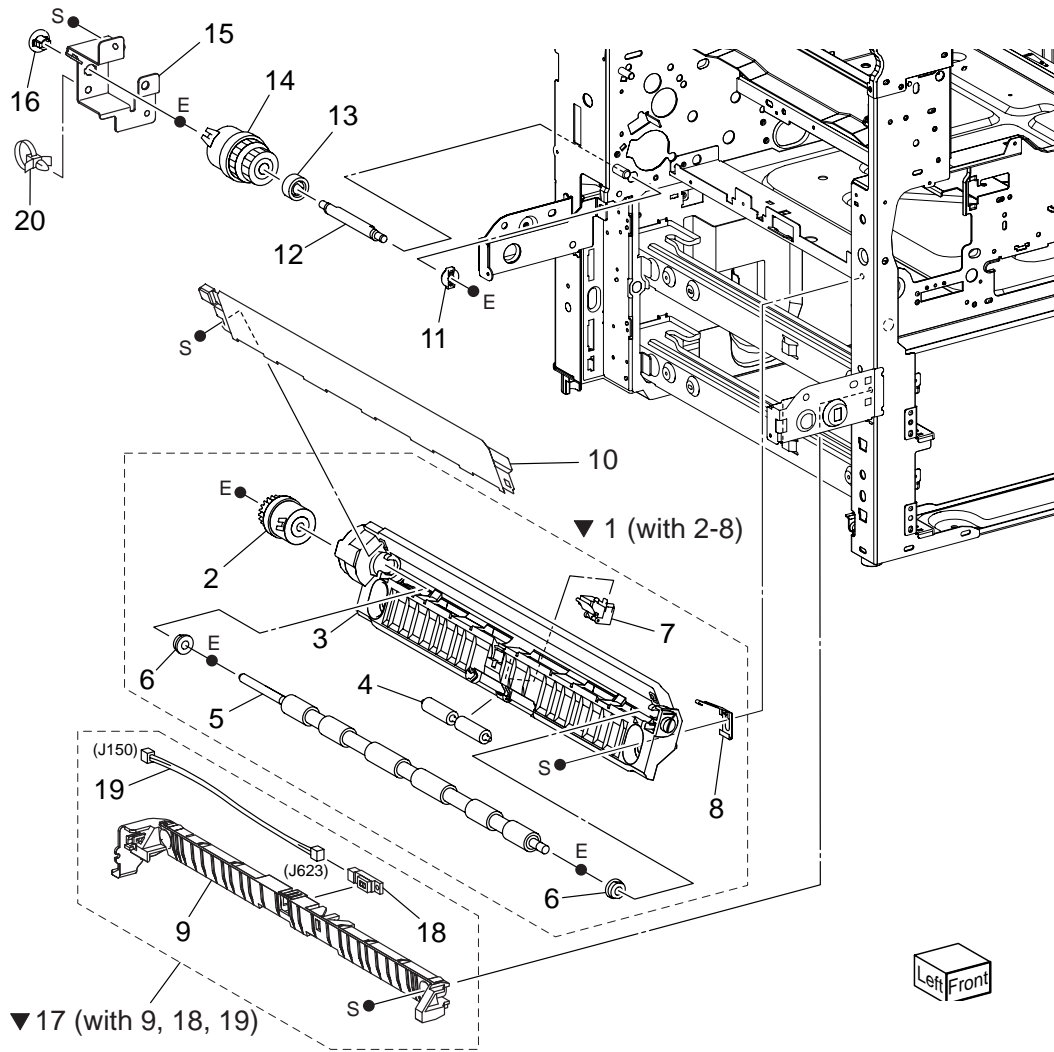


PL 4.4 L/H Cover Assembly illustration

▼ 1 (with 2-12)

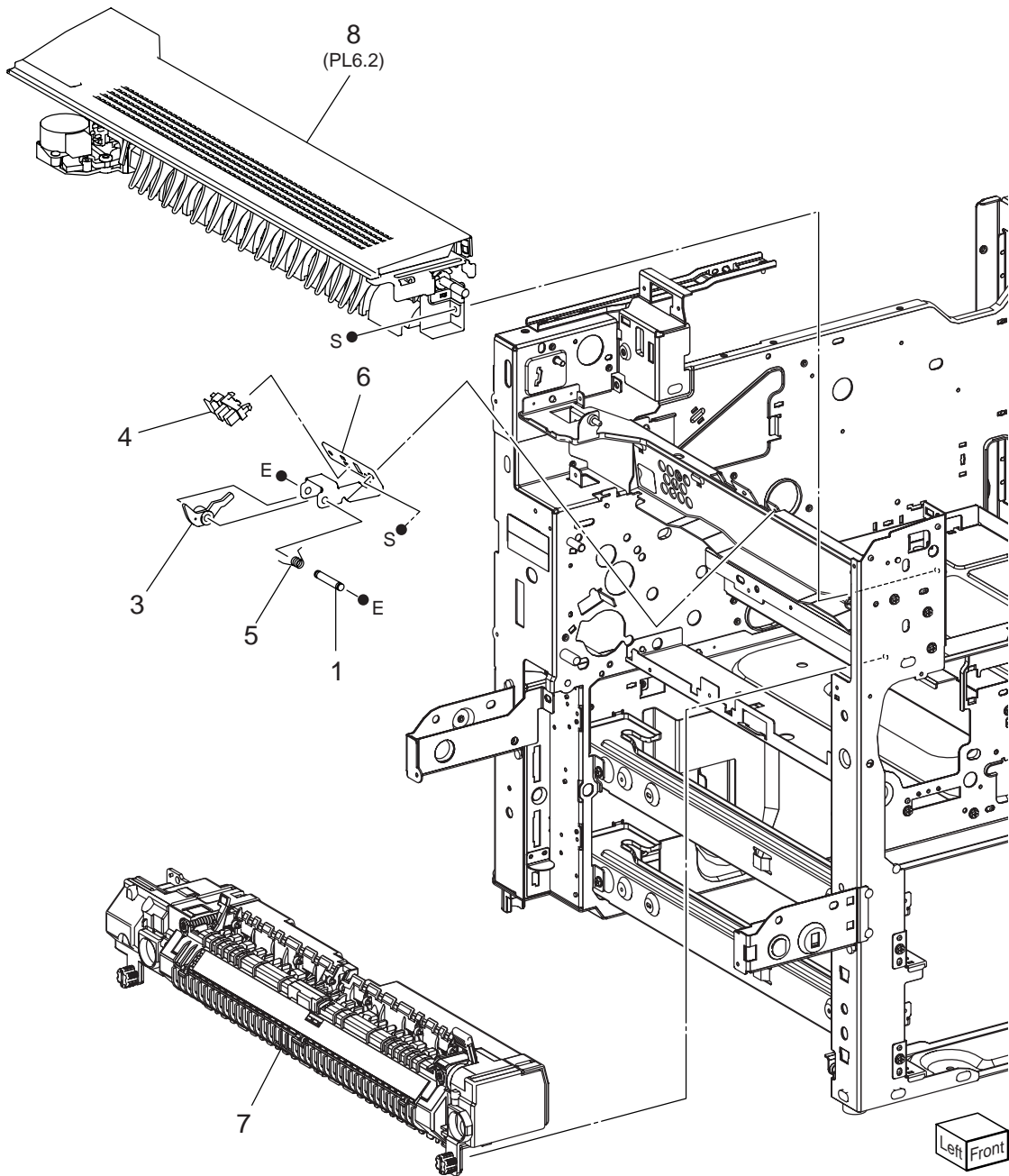


PL 4.5 Registration illustration

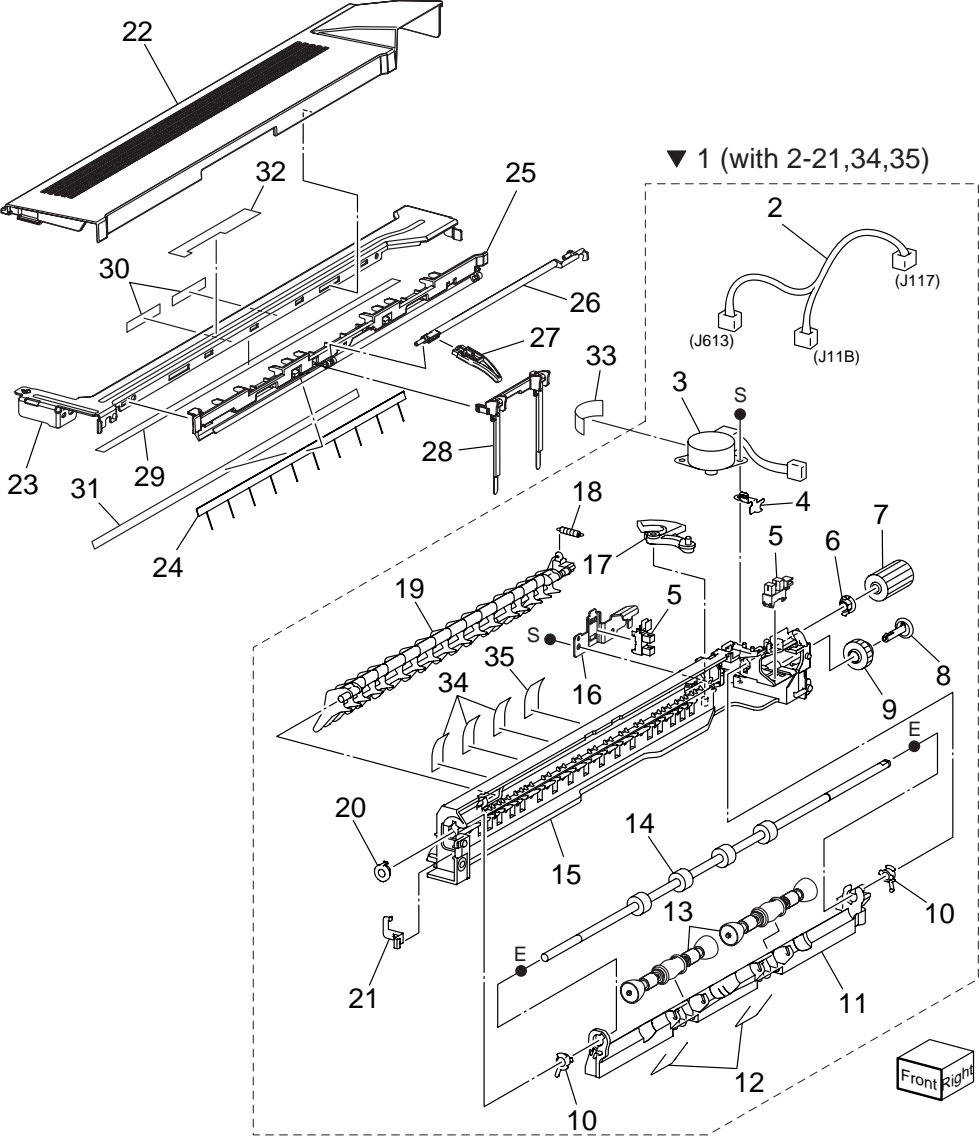


6 Fuser & Exit 1 Unit

PL 6.1 Fuser & Exit 1 Unit

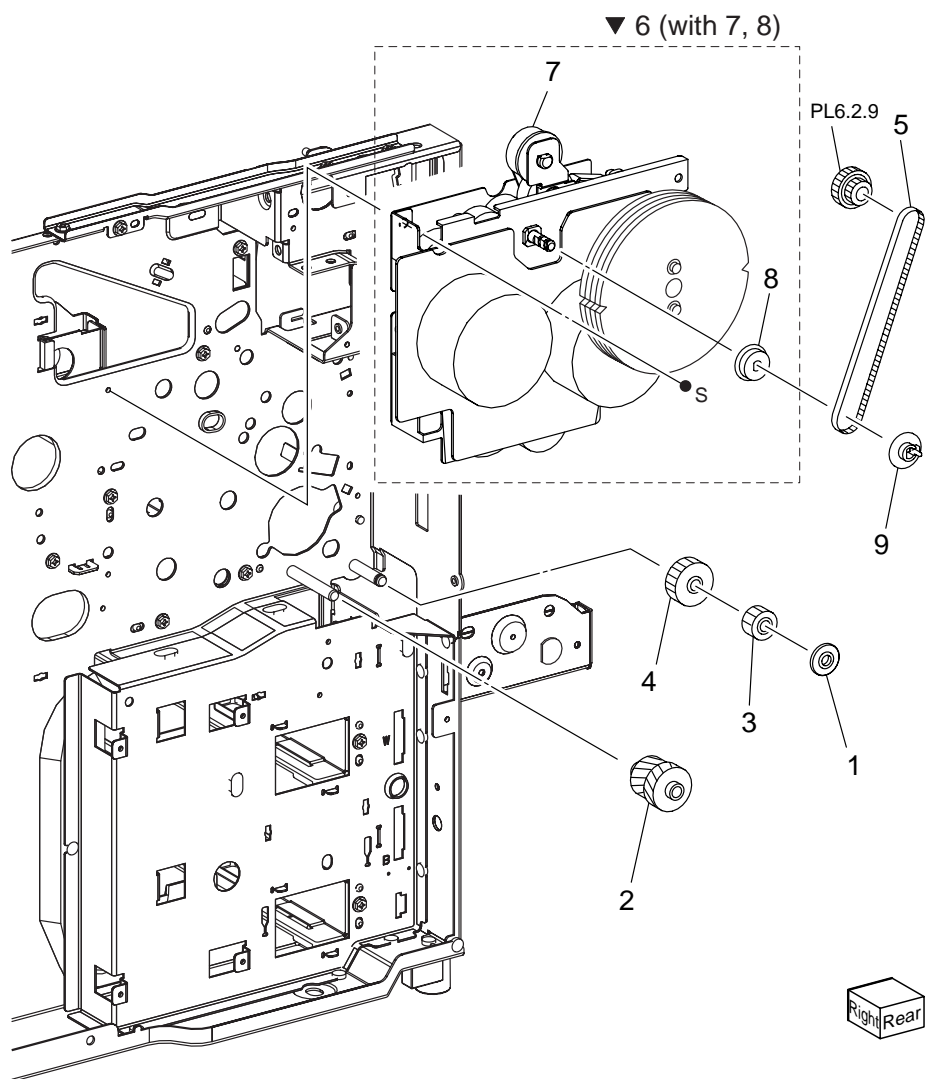


PL 6.2 Exit 1



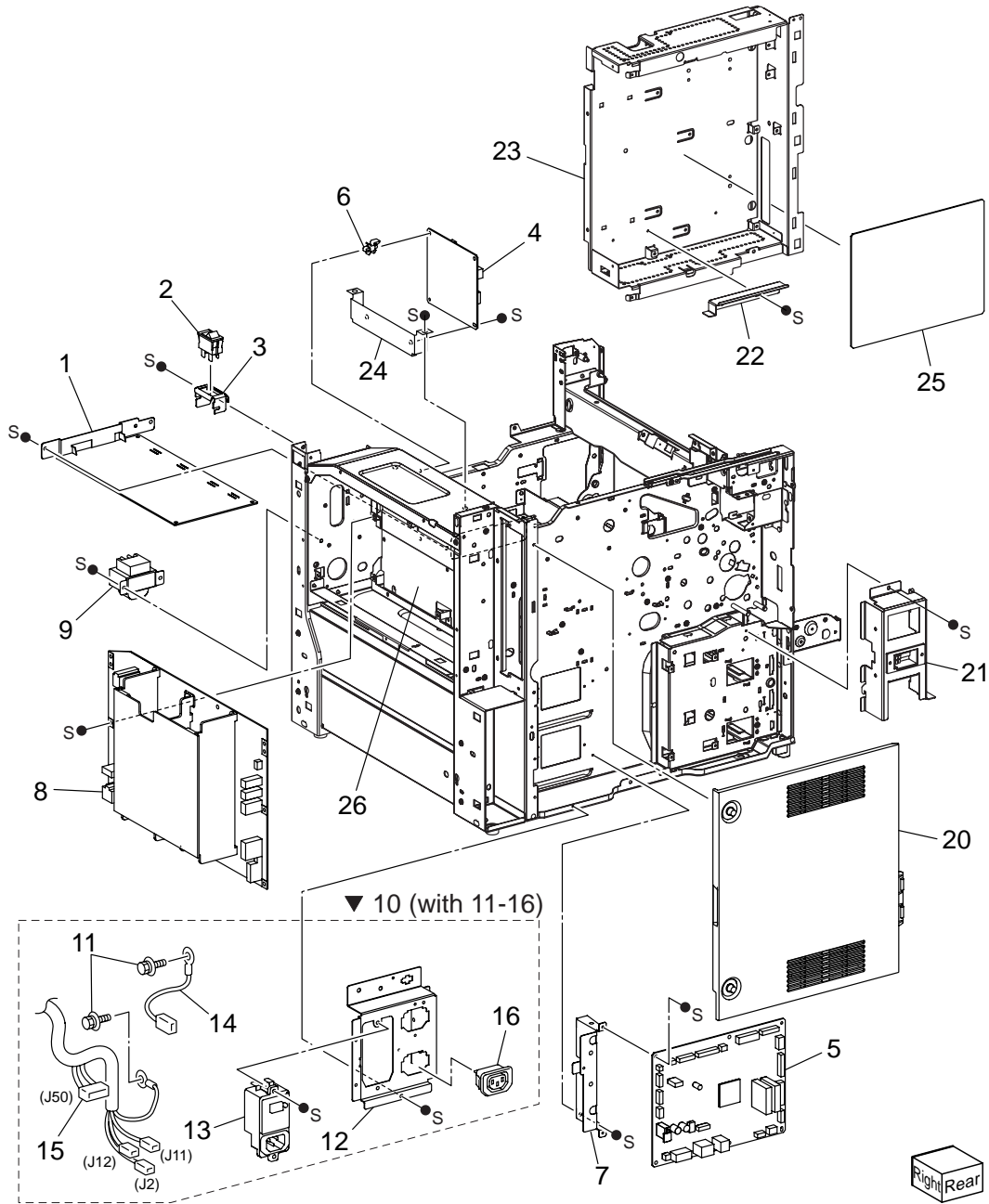
7 Drive

PL 7.1 Drive

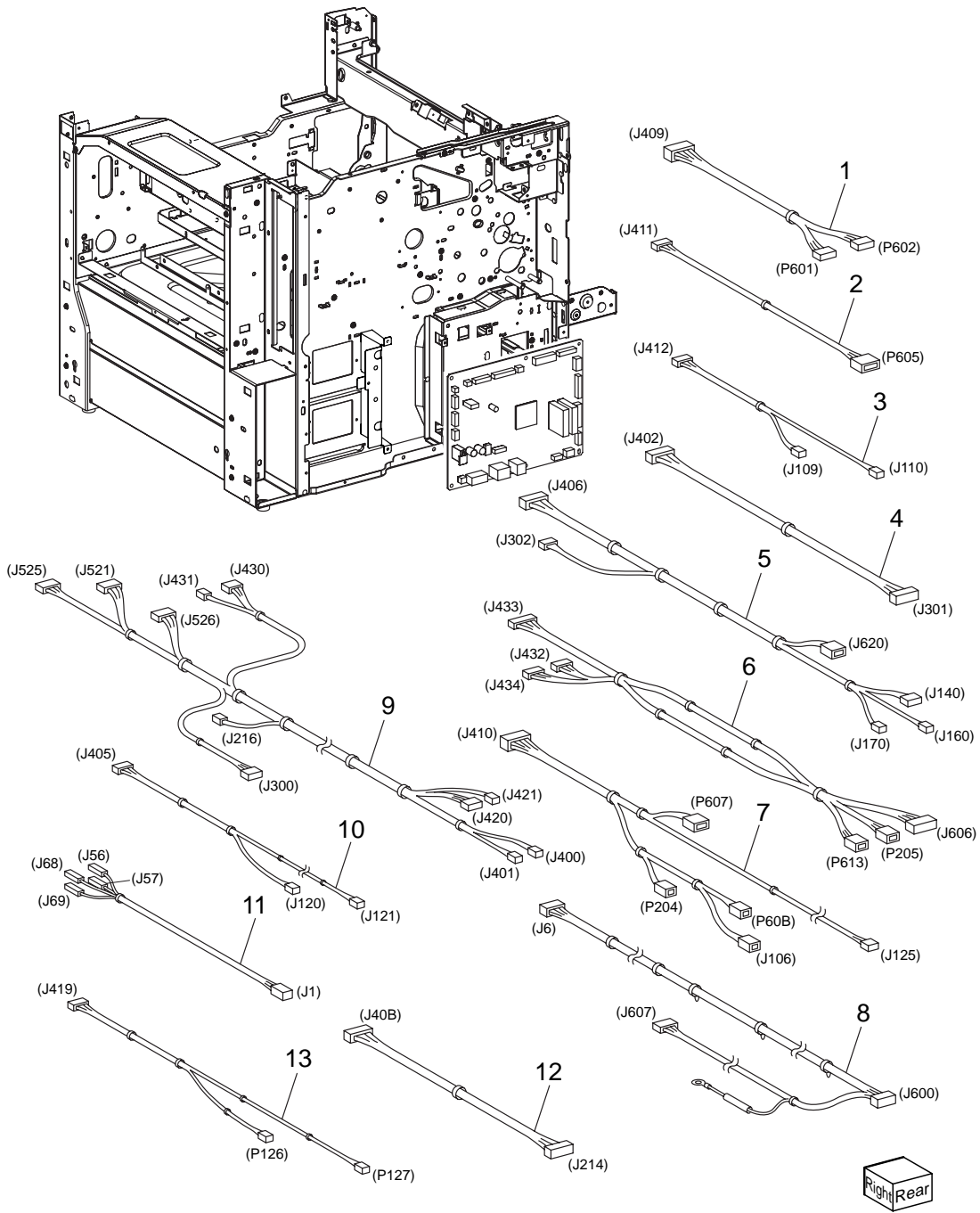


8 Electrical

PL 8.1 Electrical (1/2)



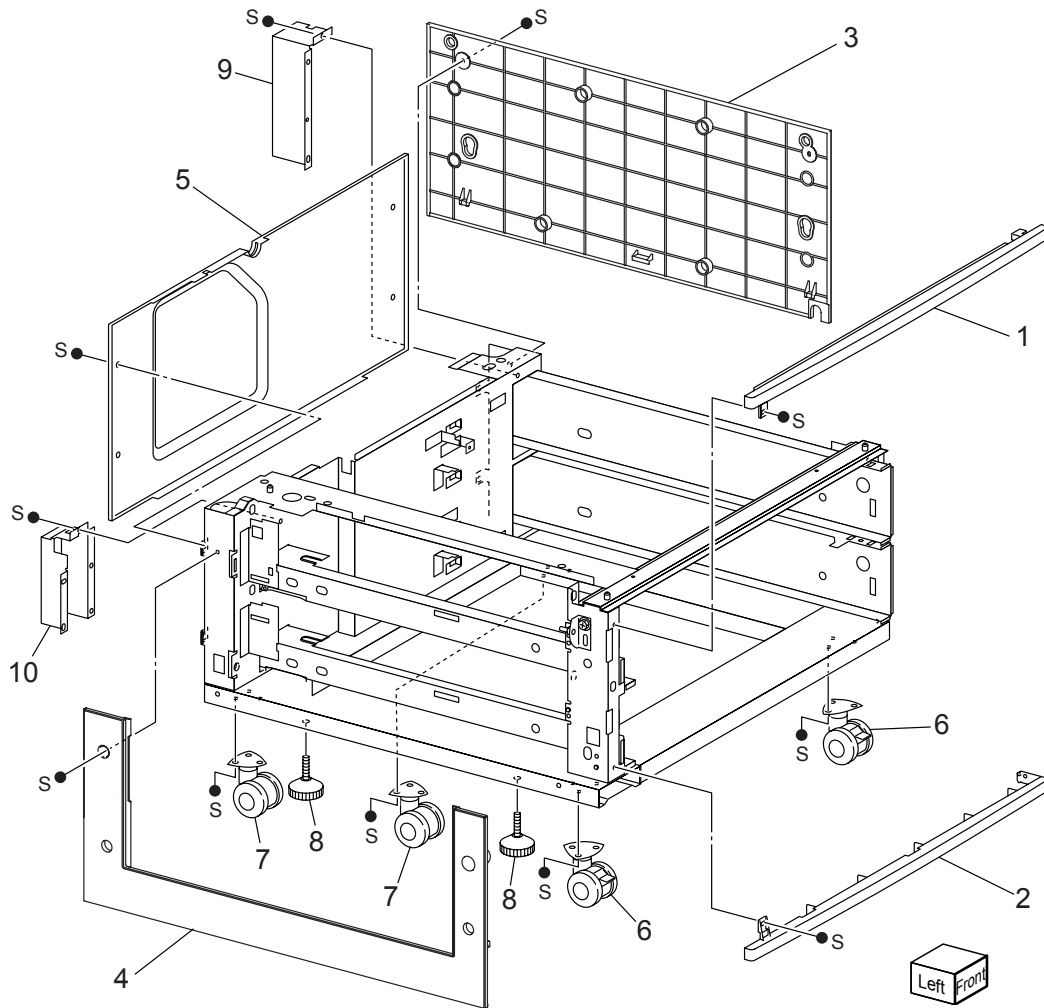
PL 8.2 Electrical (2/2)



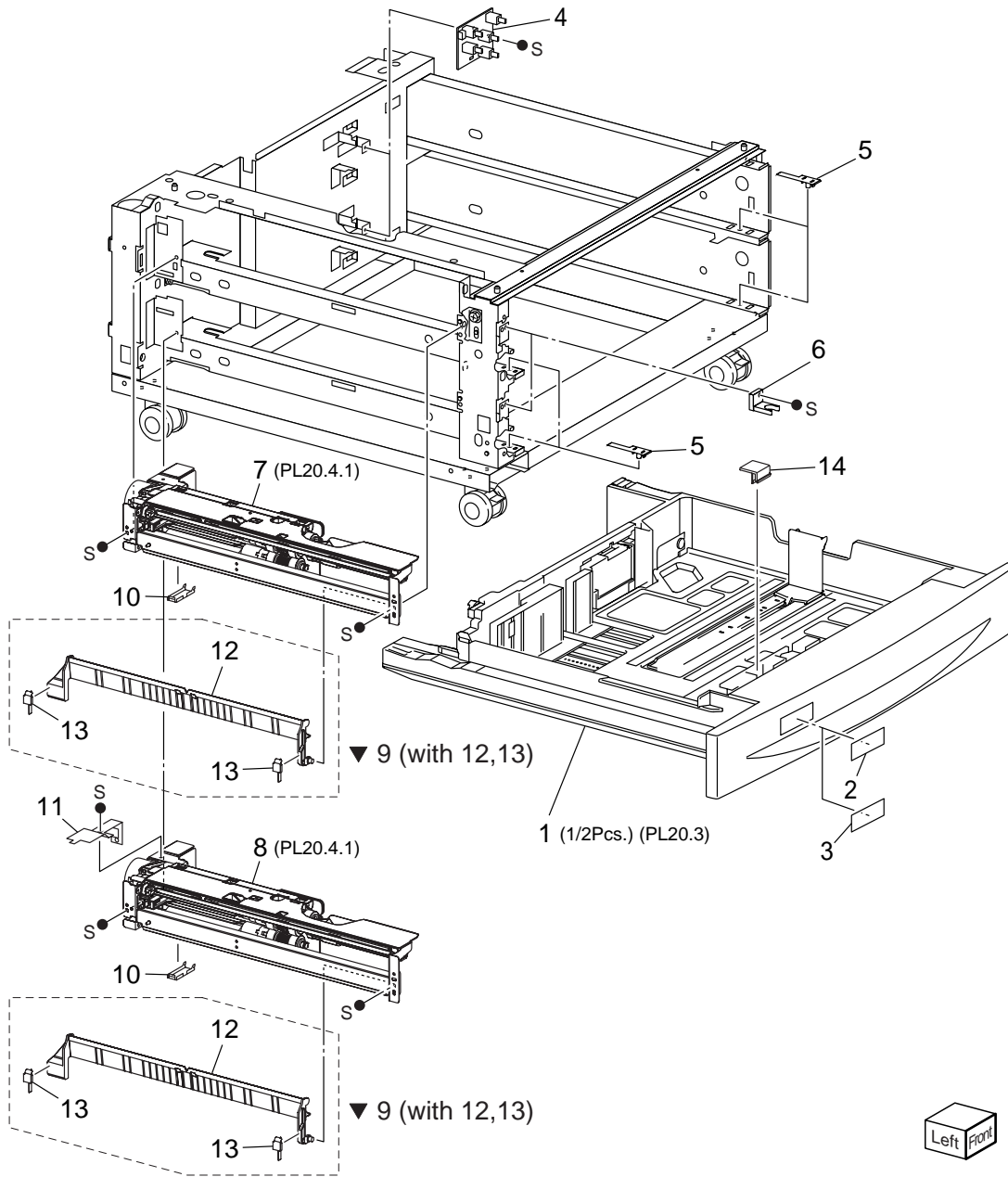
1000 Sheet Feeder

20 Covers

PL 20.1 Cover

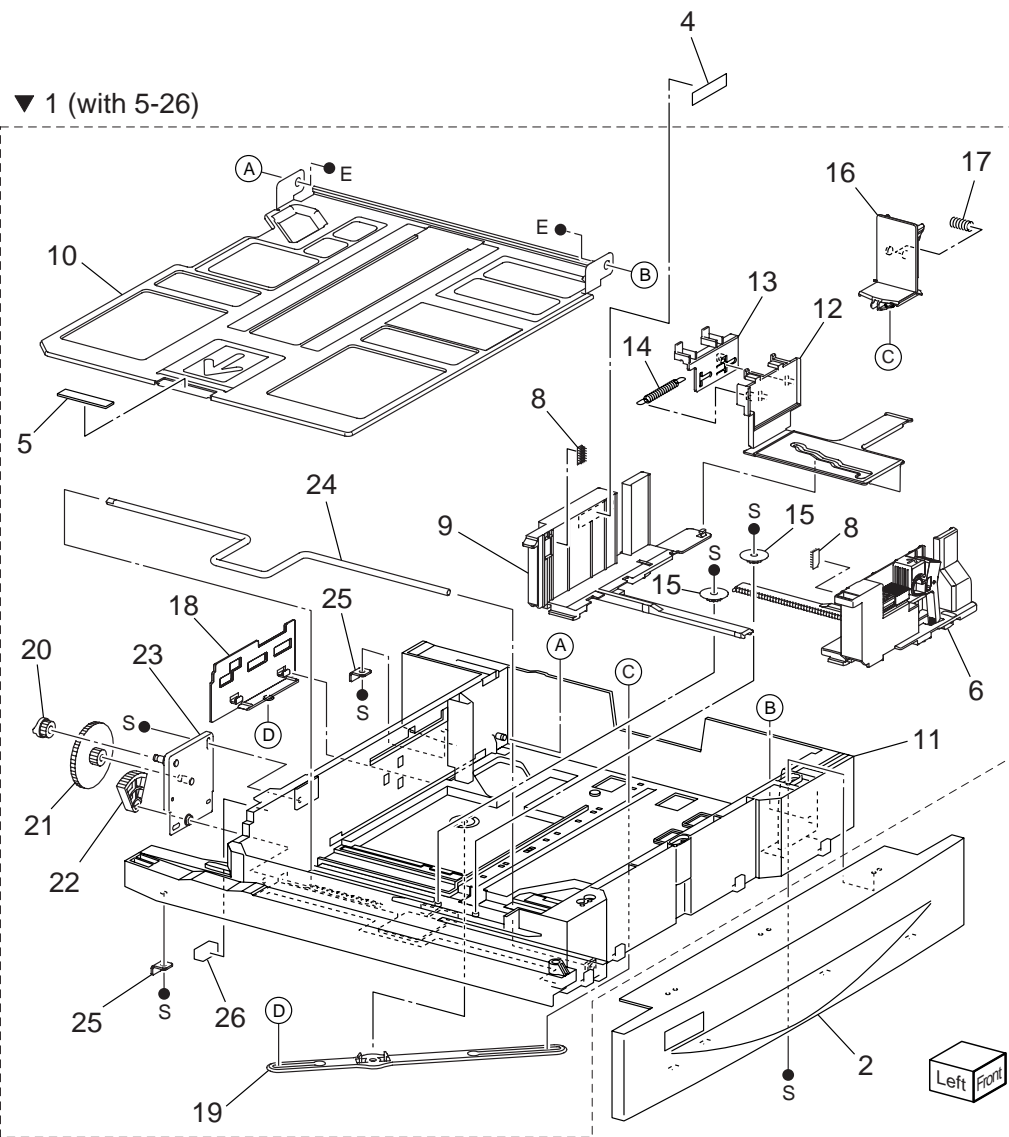


PL 20.2 Tray (1/2) & Feeder (1/2)

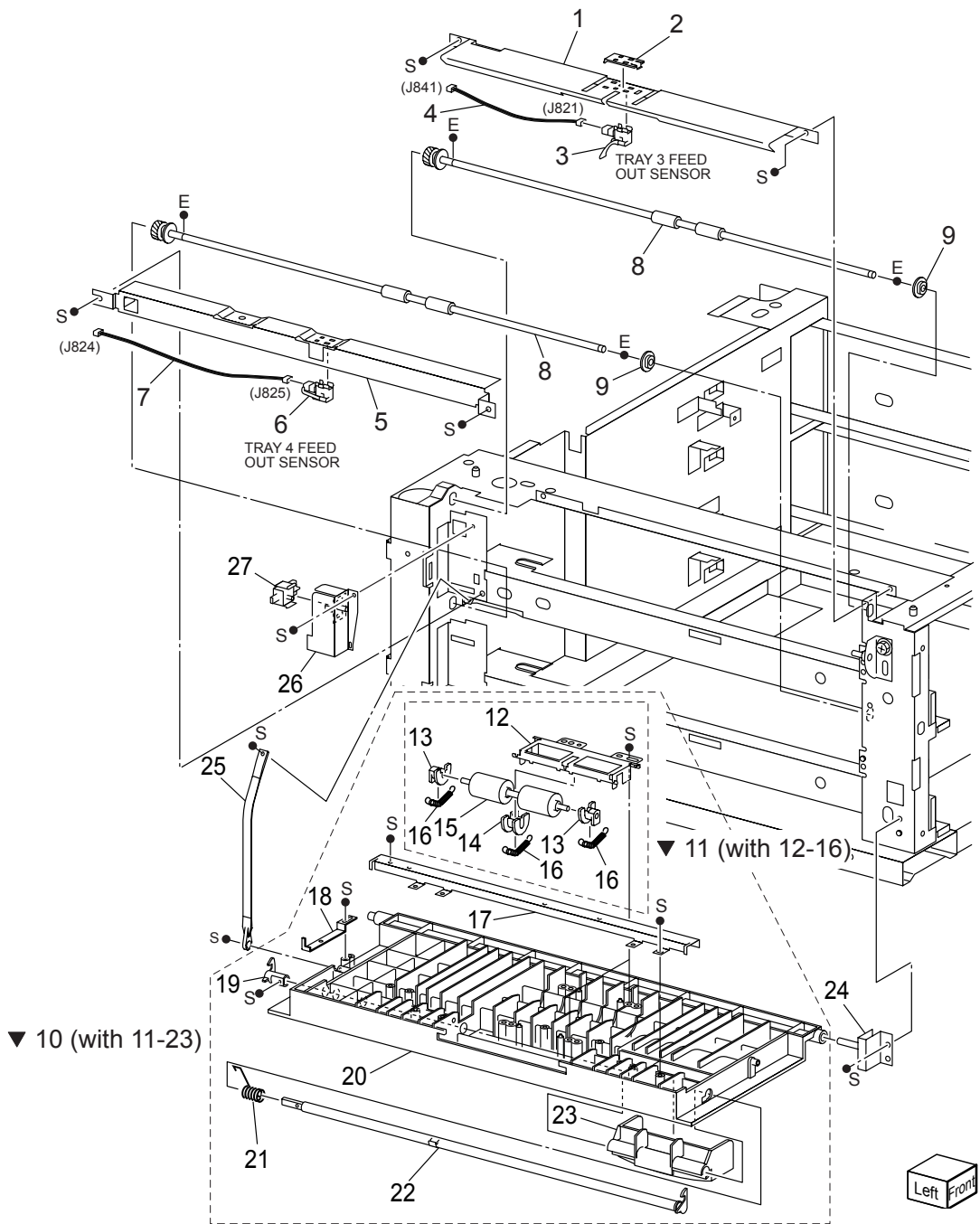


▼ 99 (with 2, 3, PL2.1.3, PL2.1.10, PL2.1.11, PL2.1.12)

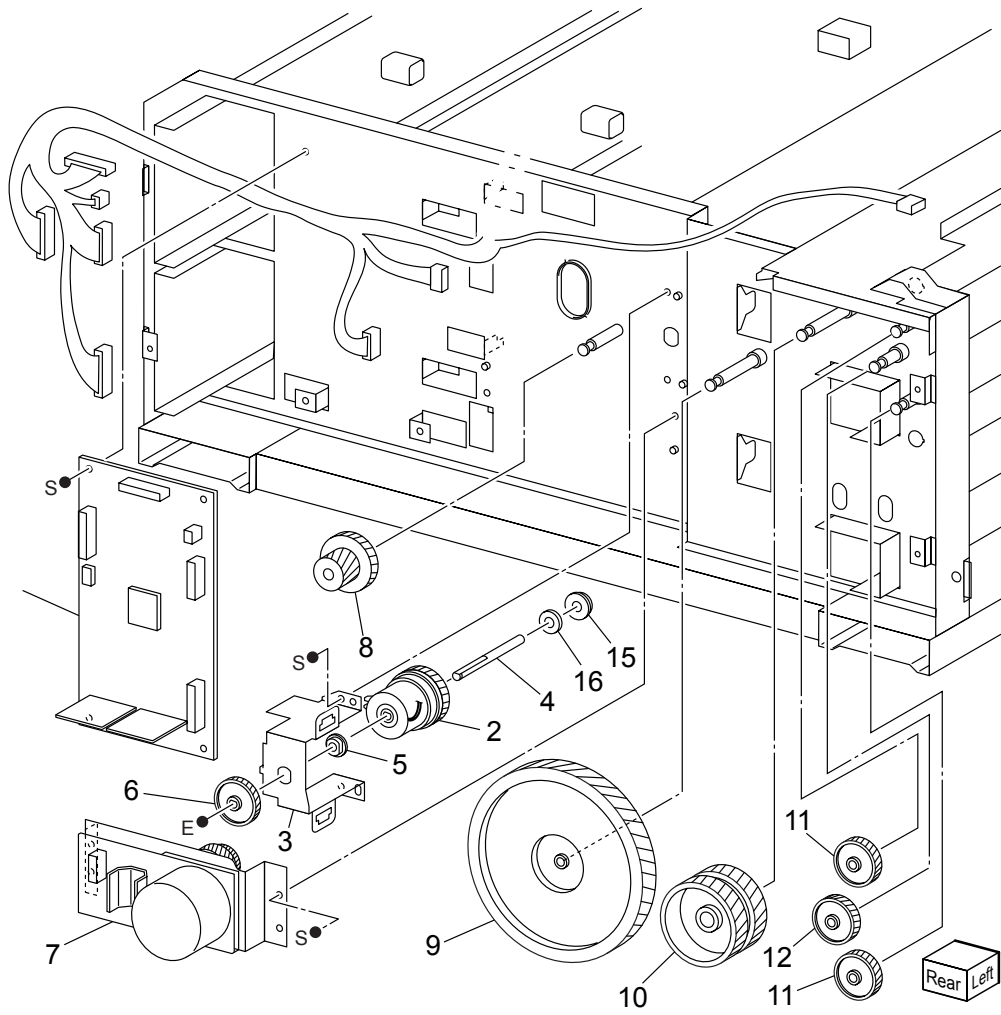
PL 20.3 Tray (2/2)



PL 20.5 Transportation

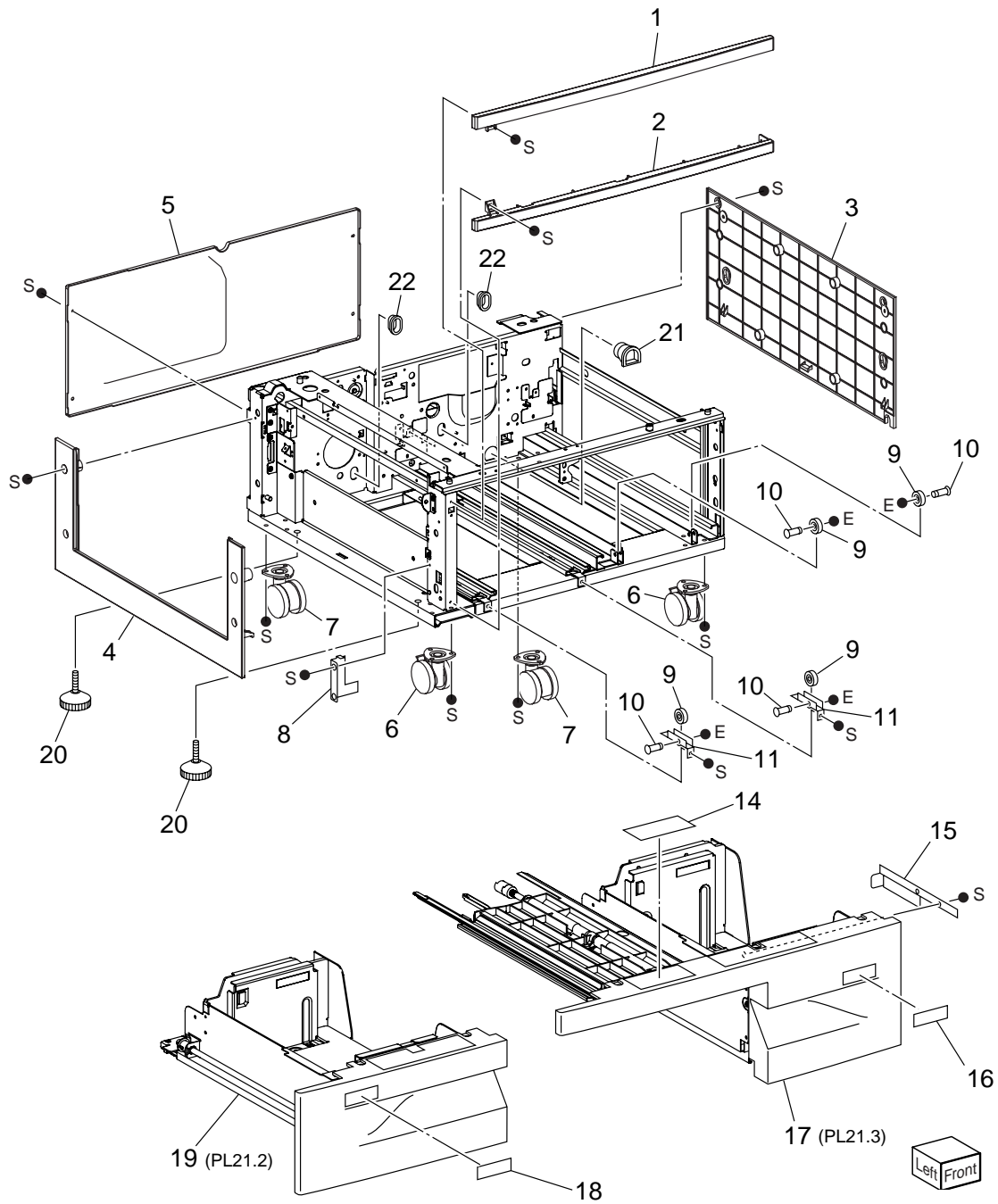


PL 20.6 Drive & Electrical

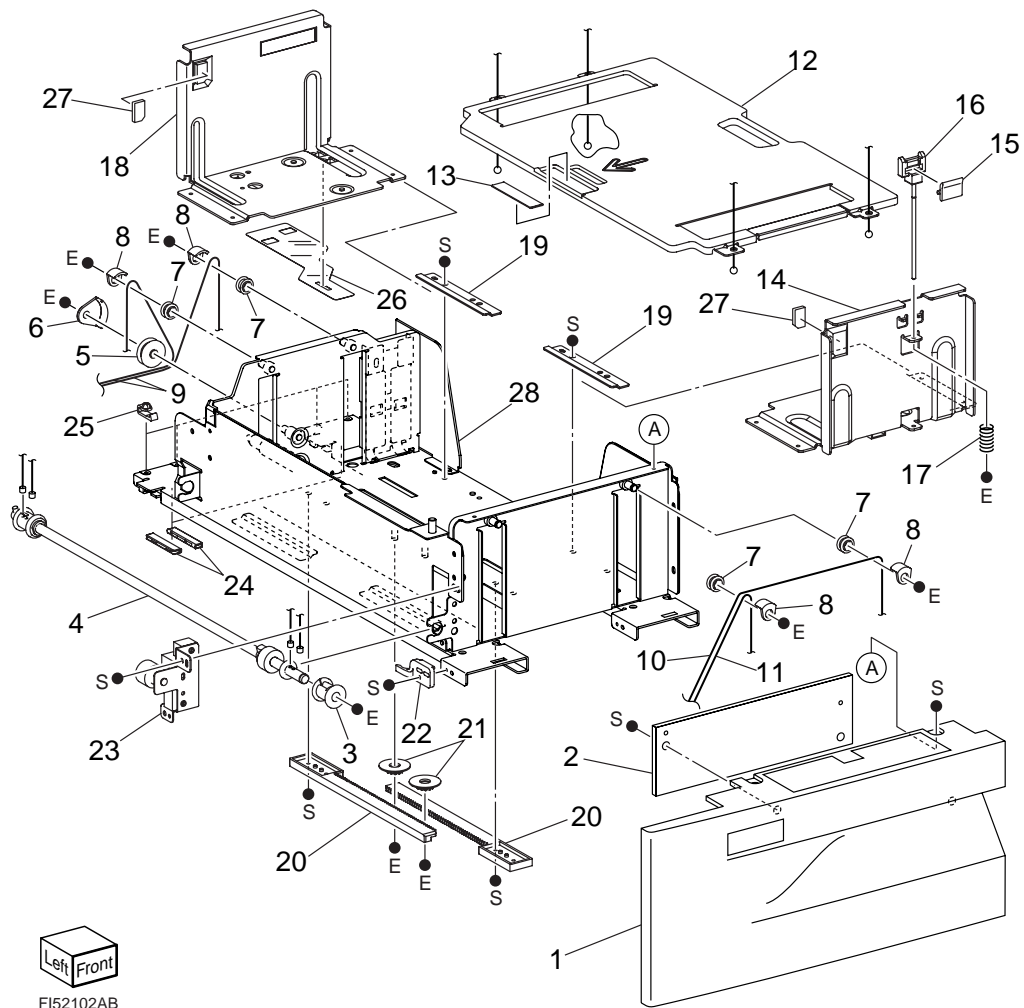


Tandem Tray

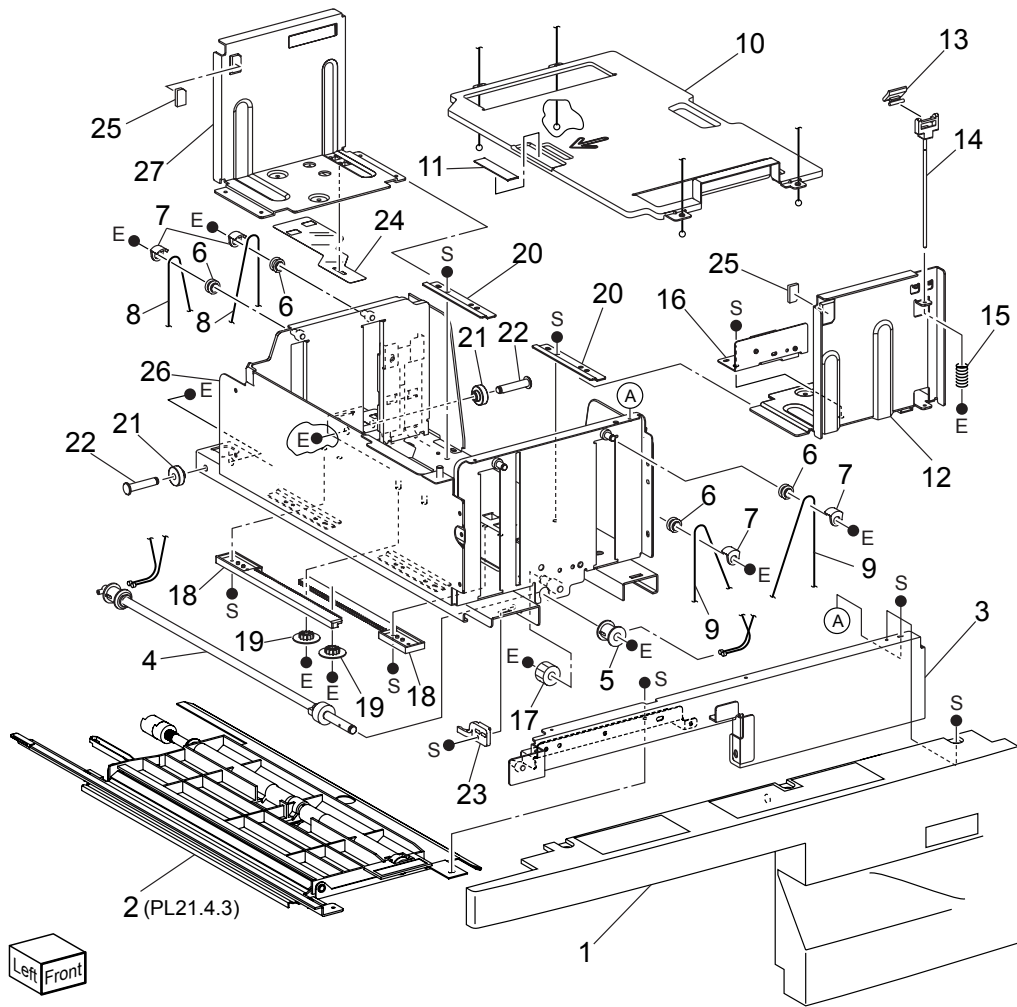
PL 21.1 Cover



PL 21.2 Tray 3

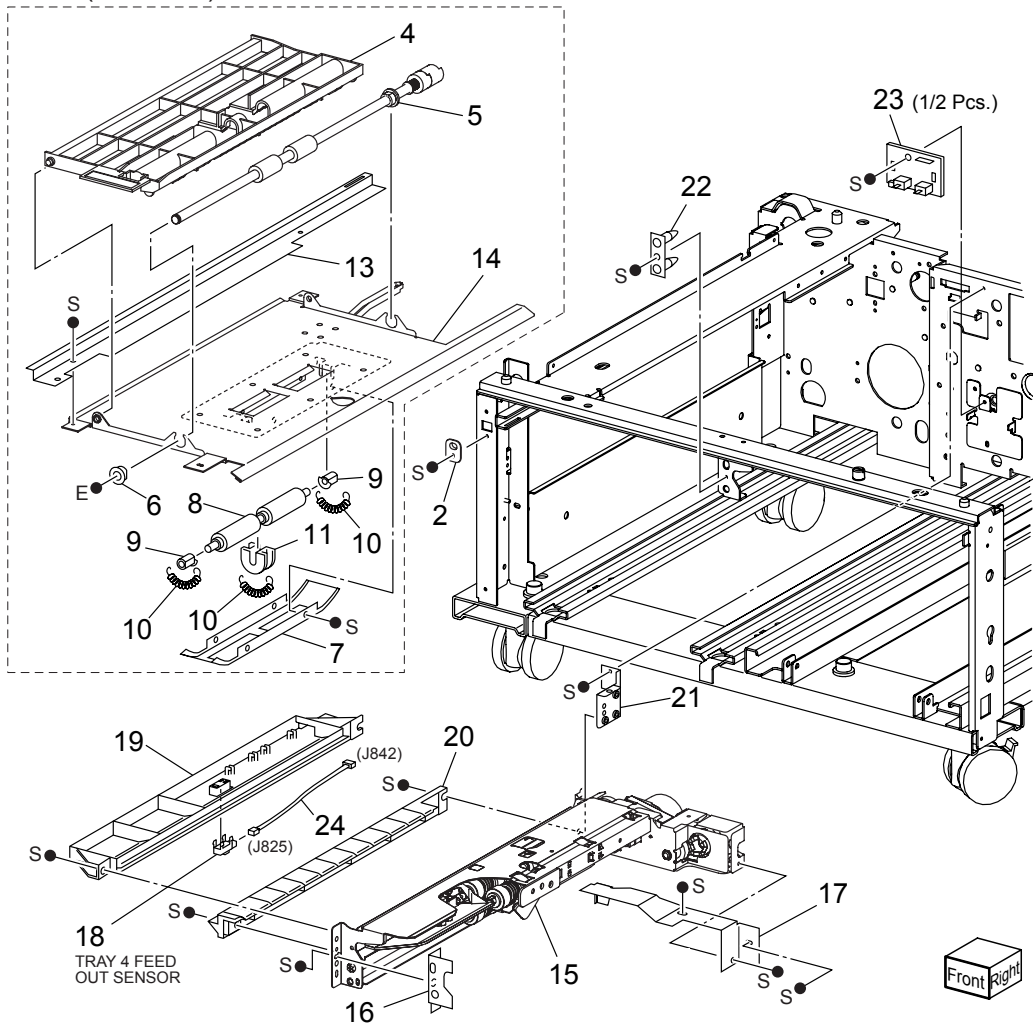


PL 21.3 Tray 4

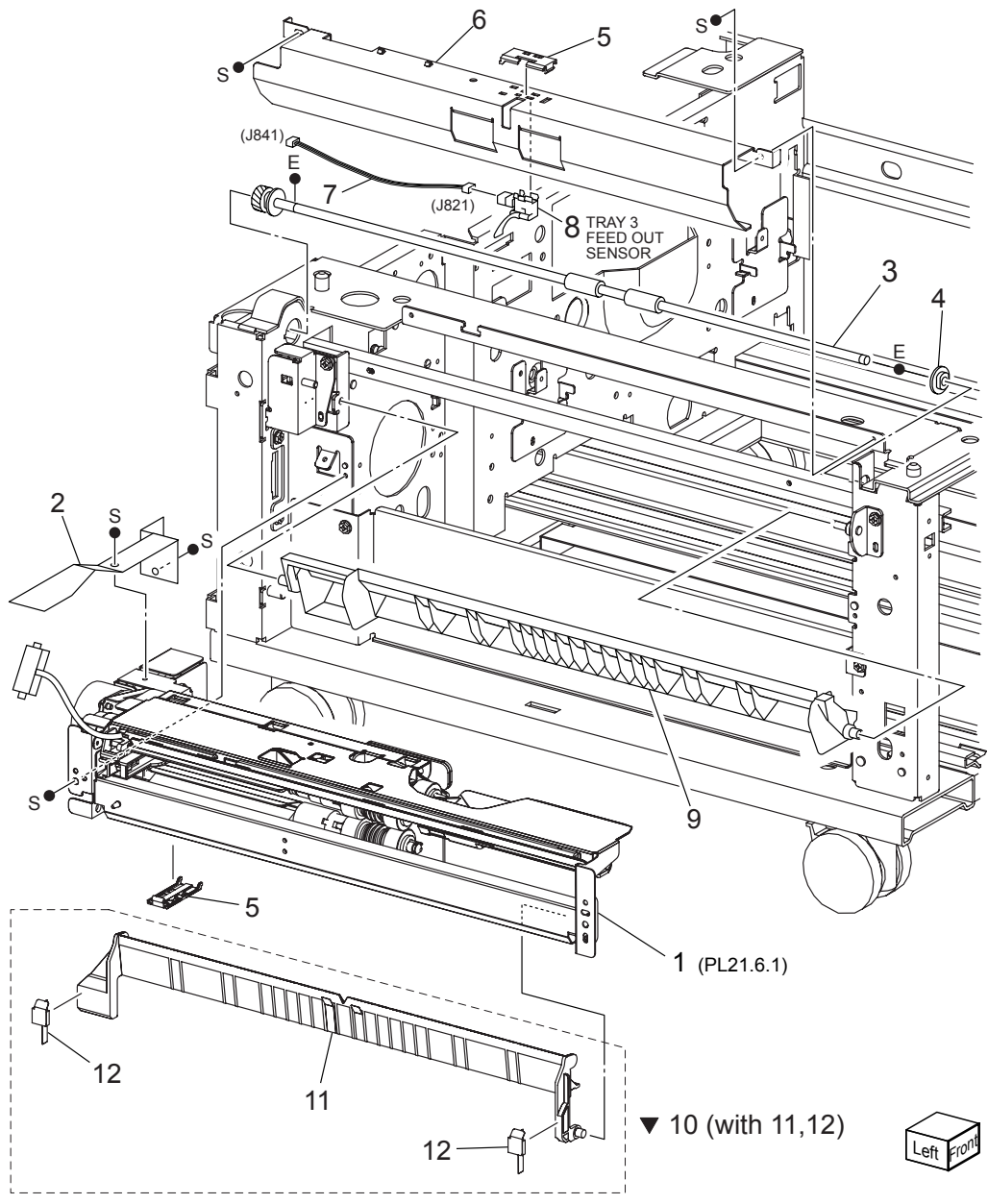


PL 21.4 Feeder (1/3)

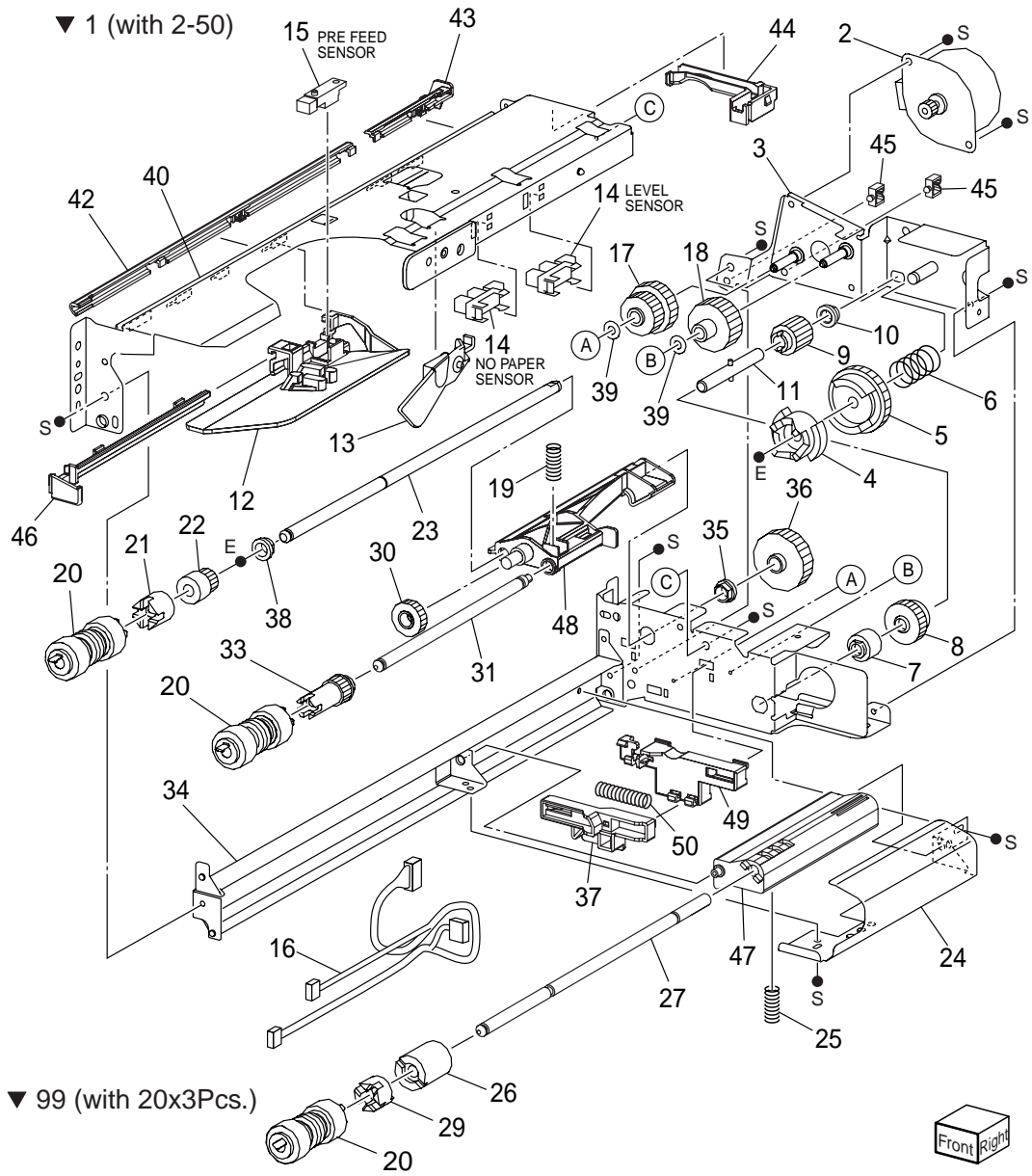
▼ 3 (with 4-14)



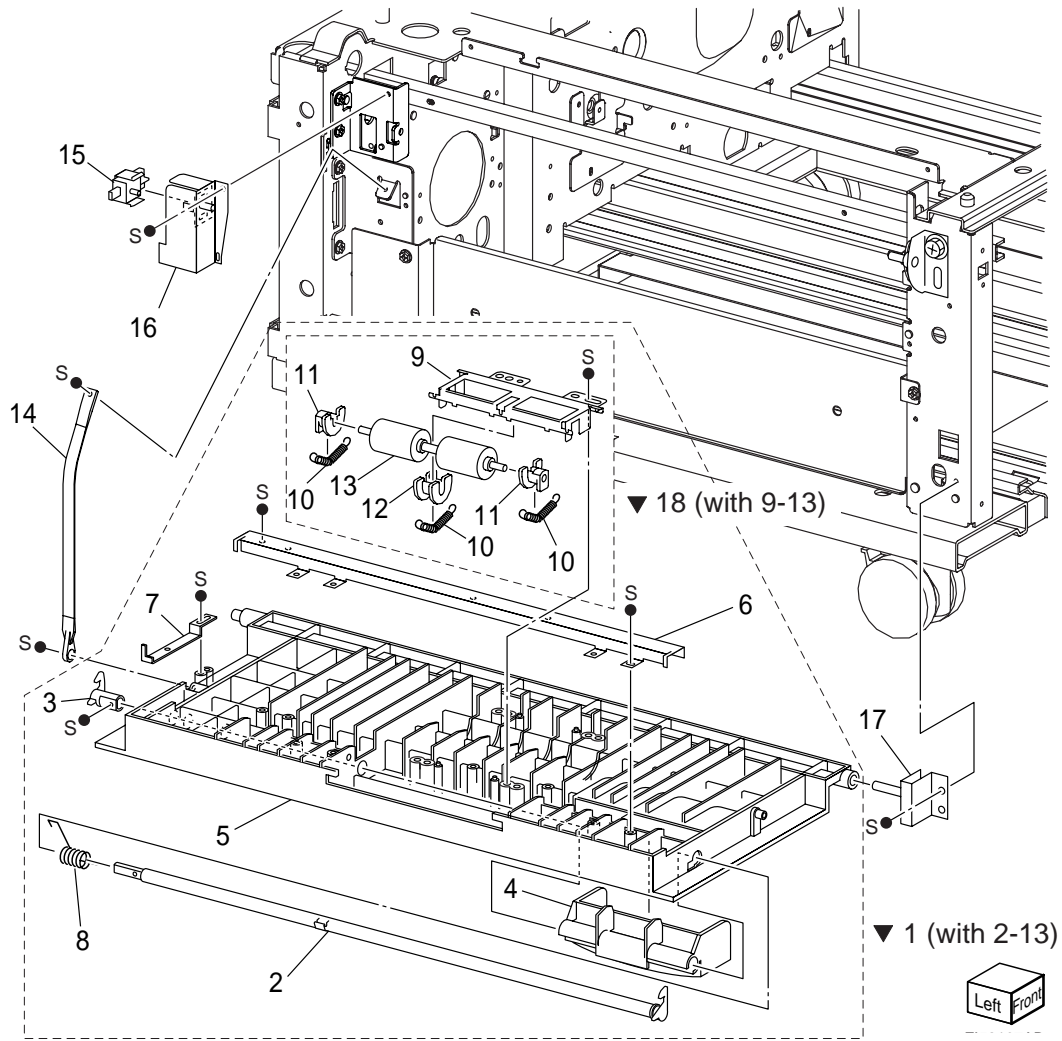
PL 21.5 Feeder (2/3)



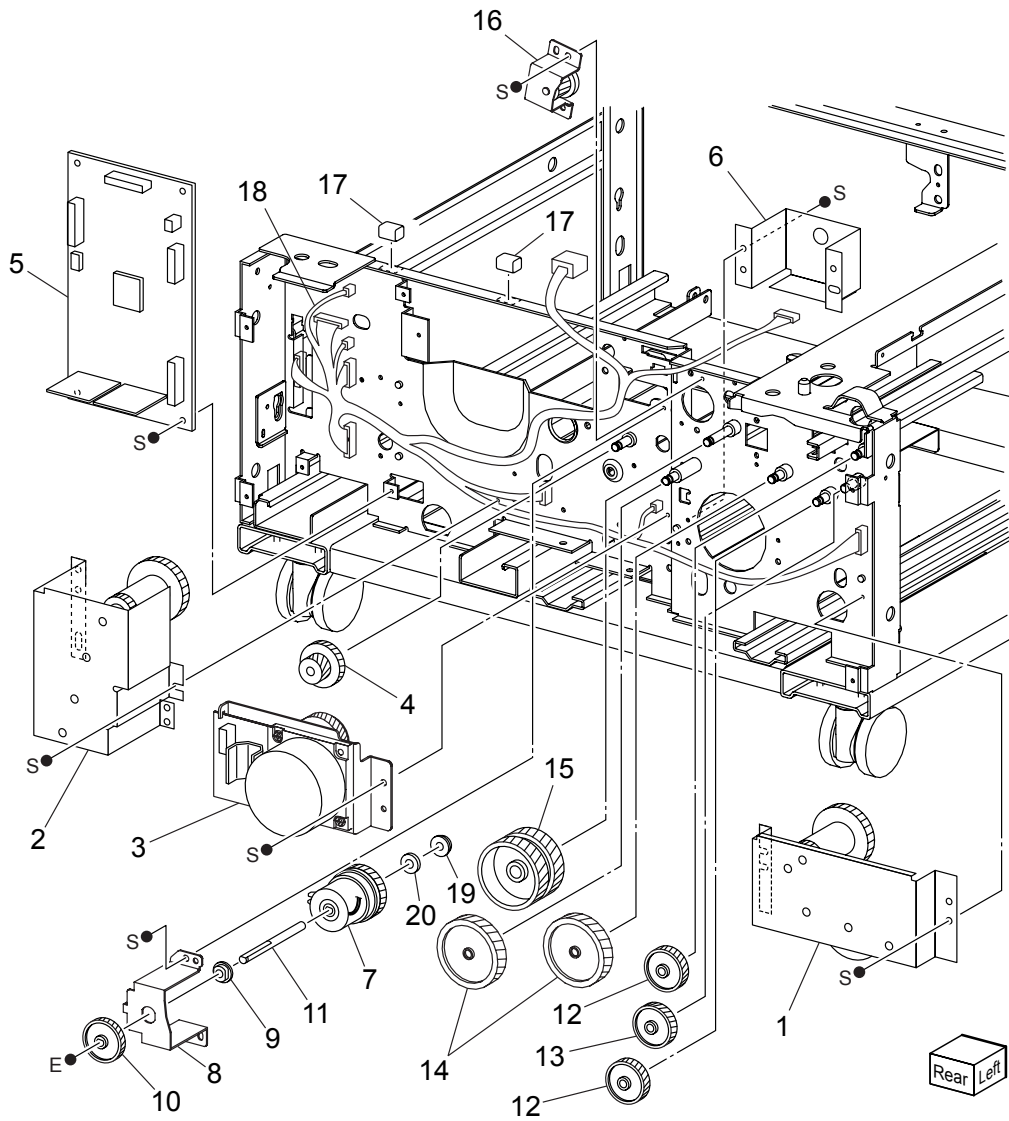
PL 21.6 Feeder (3/3)



PL 21.7 Transportation

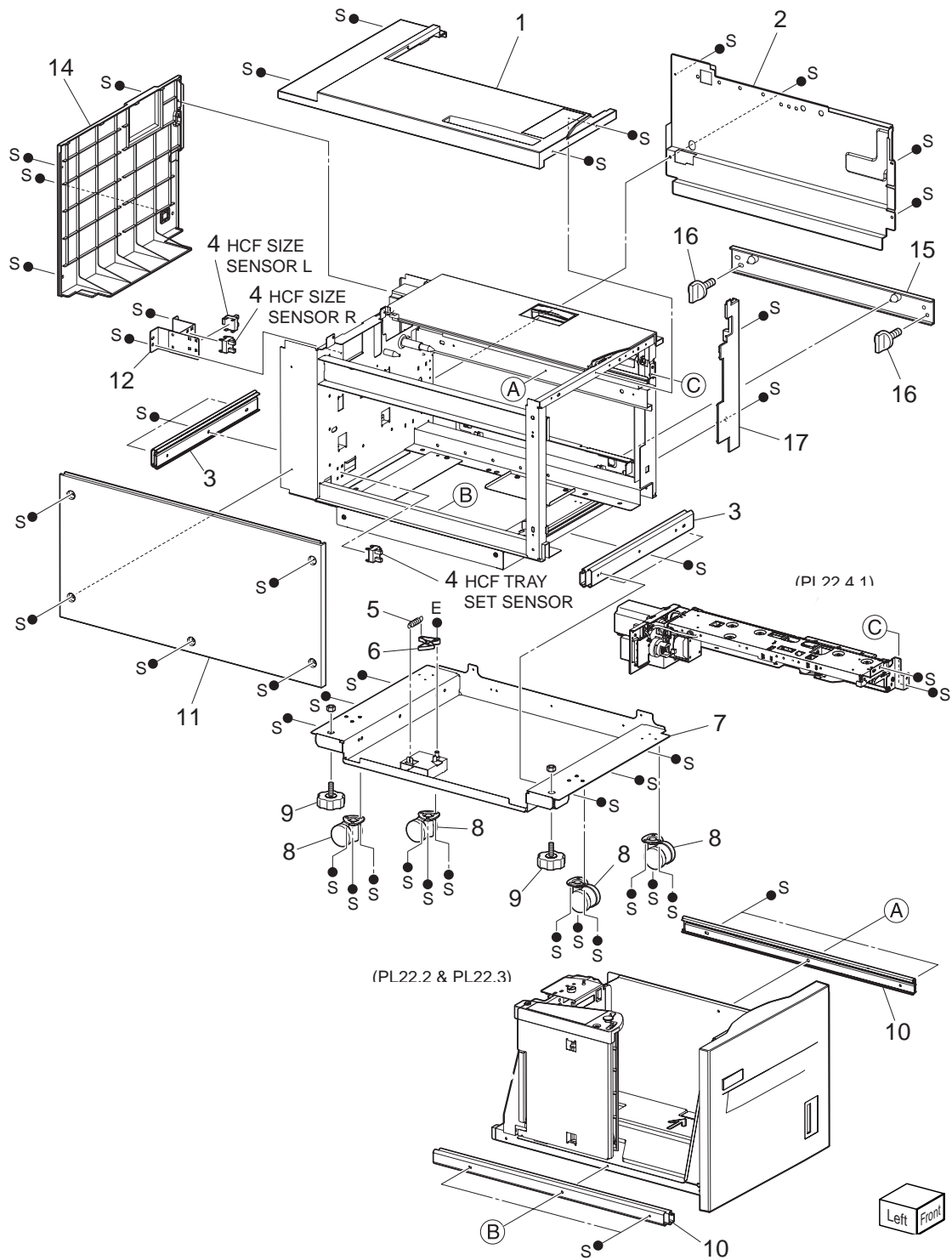


PL 21.8 Drive & Electrical

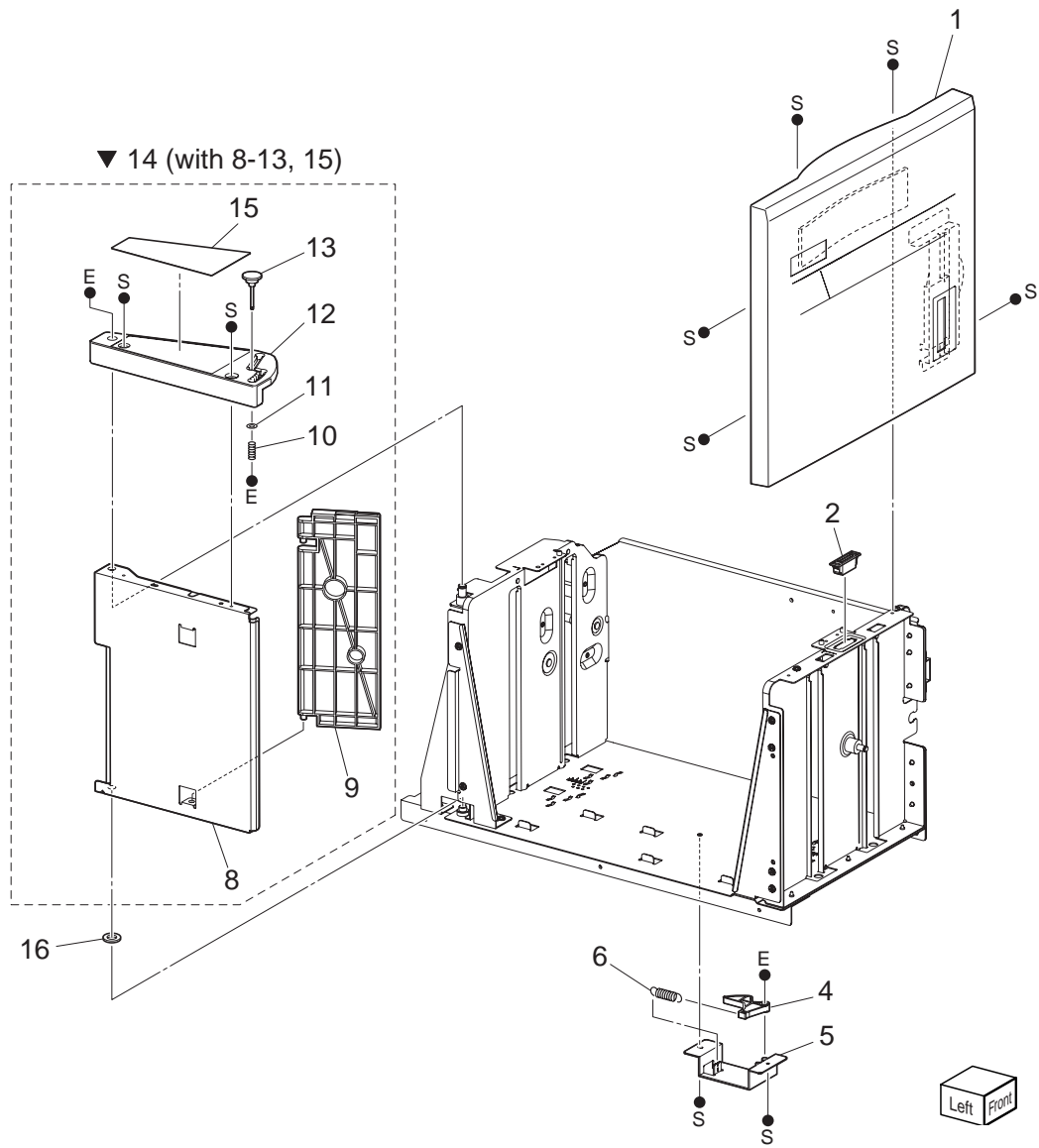


HCF

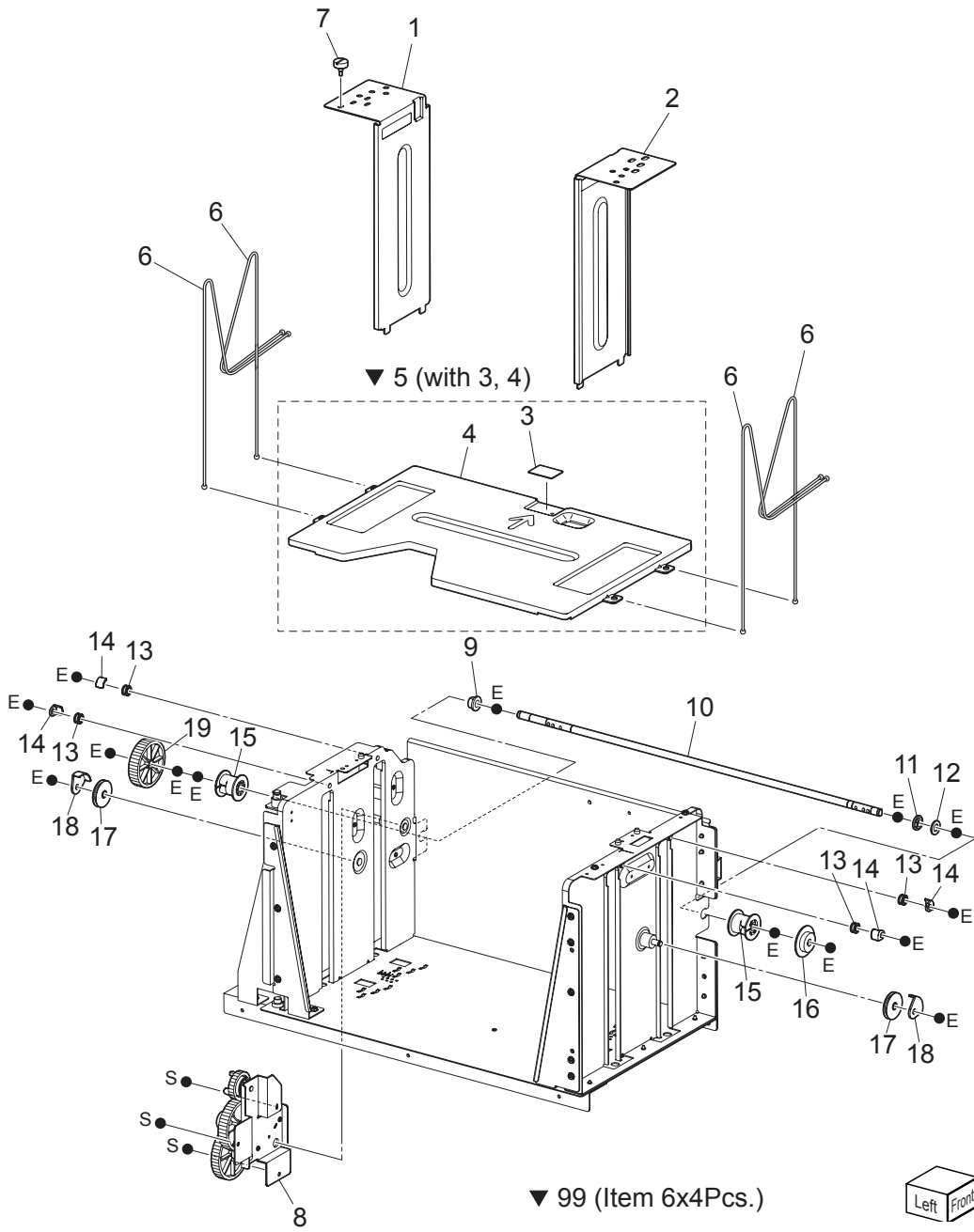
PL 22.1 Cover



PL 22.2 Tray (1/2)

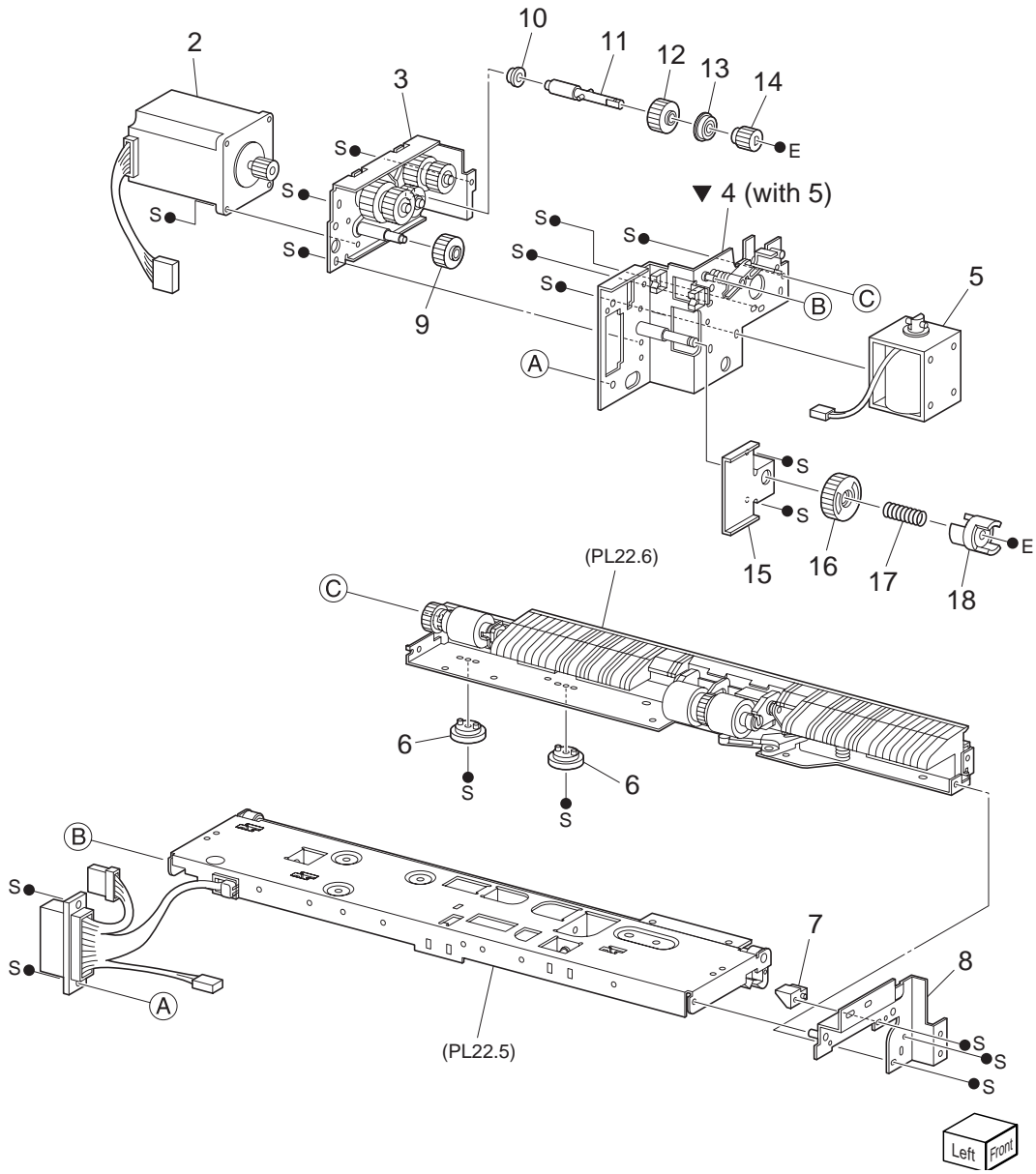


PL 22.3 Tray (2/2)

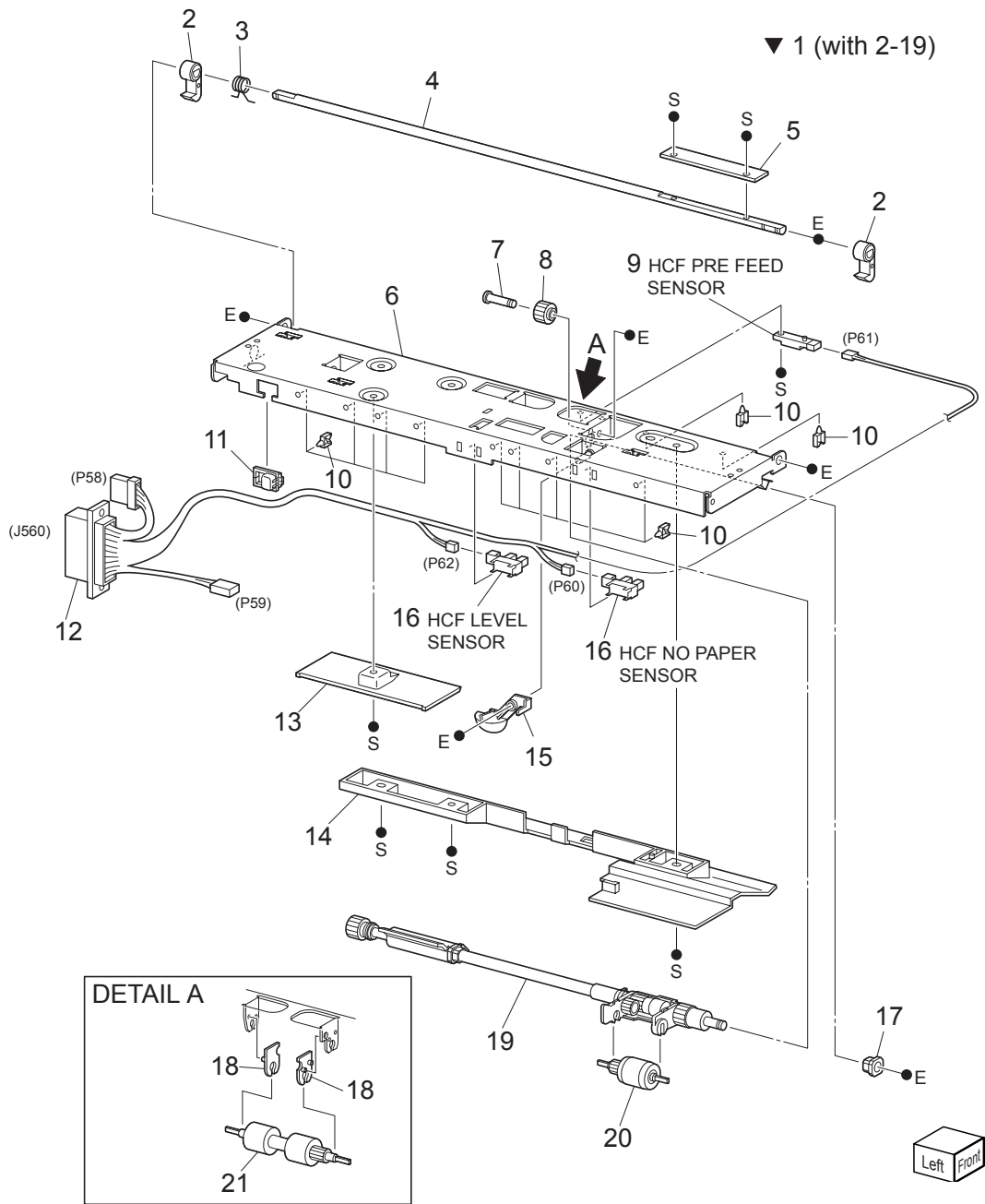


PL 22.4 Feeder (1/3)

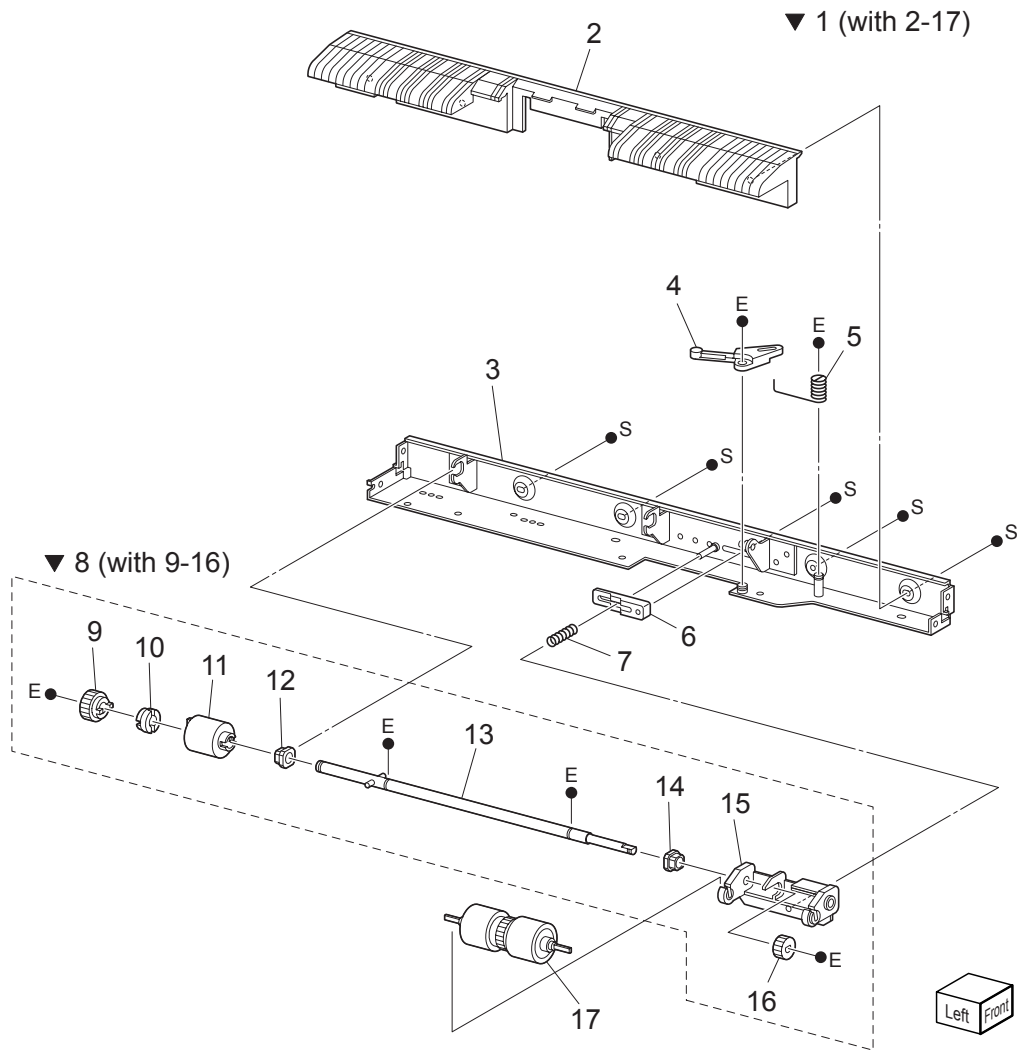
▼ 1 (with 2-18, PL22.5, PL22.6)



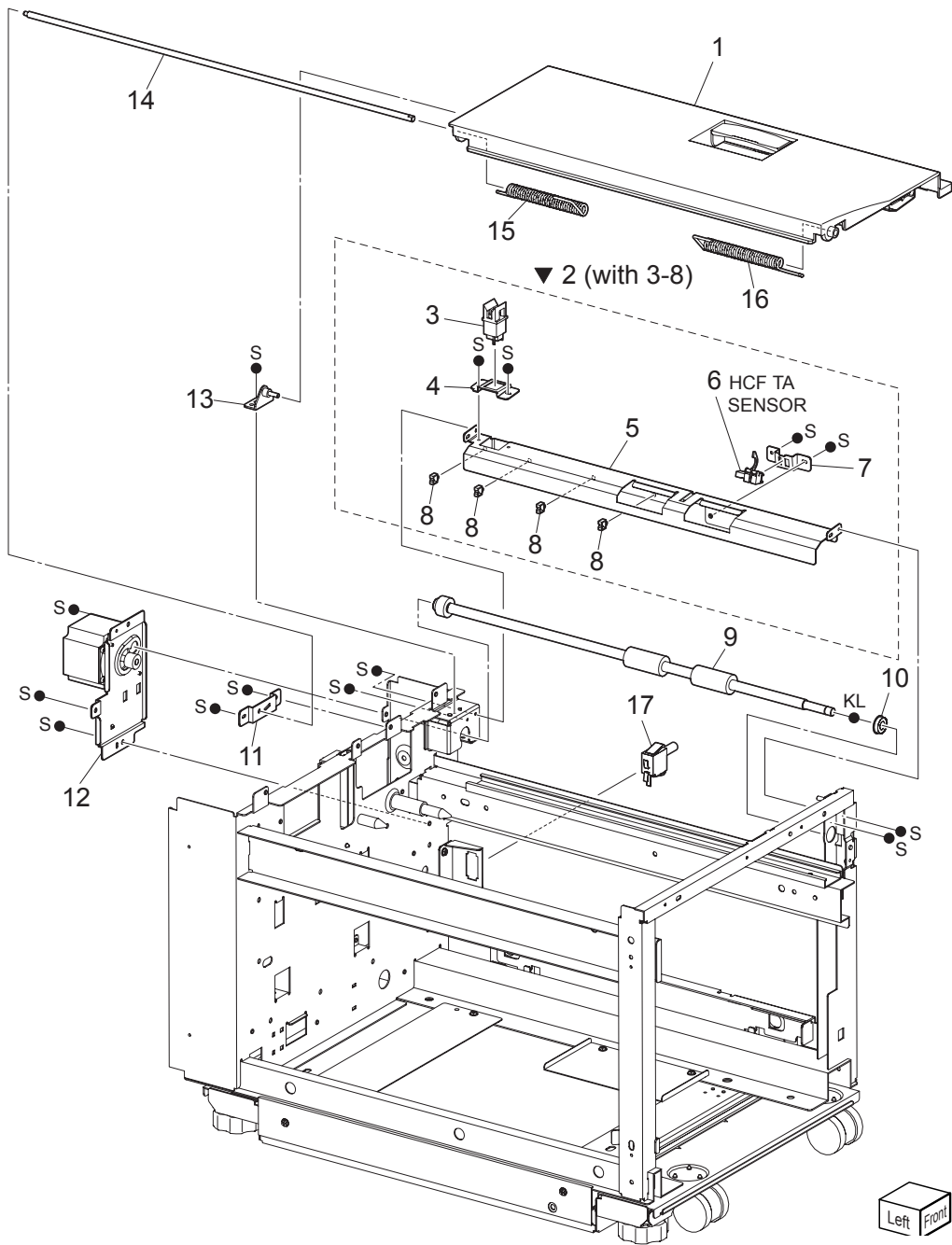
PL 22.5 Feeder (2/3)



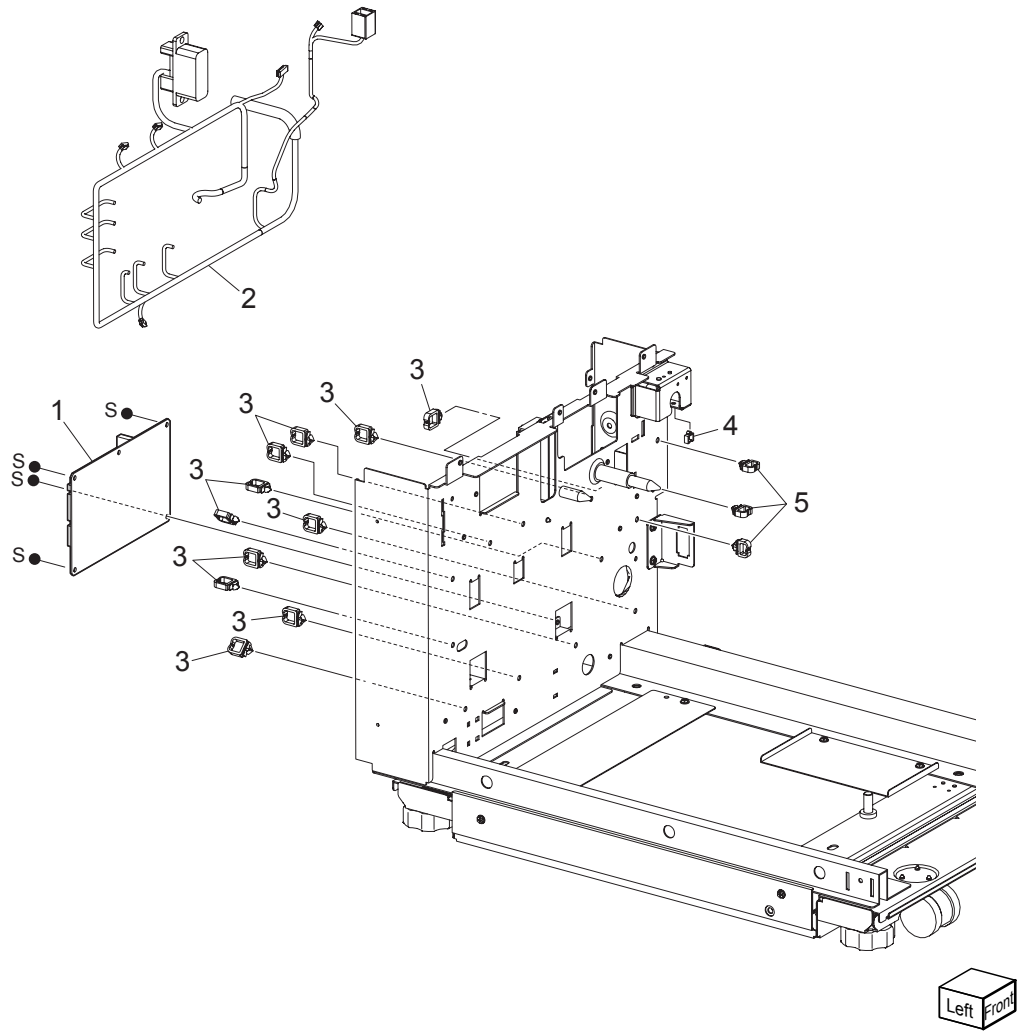
PL 22.6 Feeder (3/3)



PL 22.7 Drive & Transportation

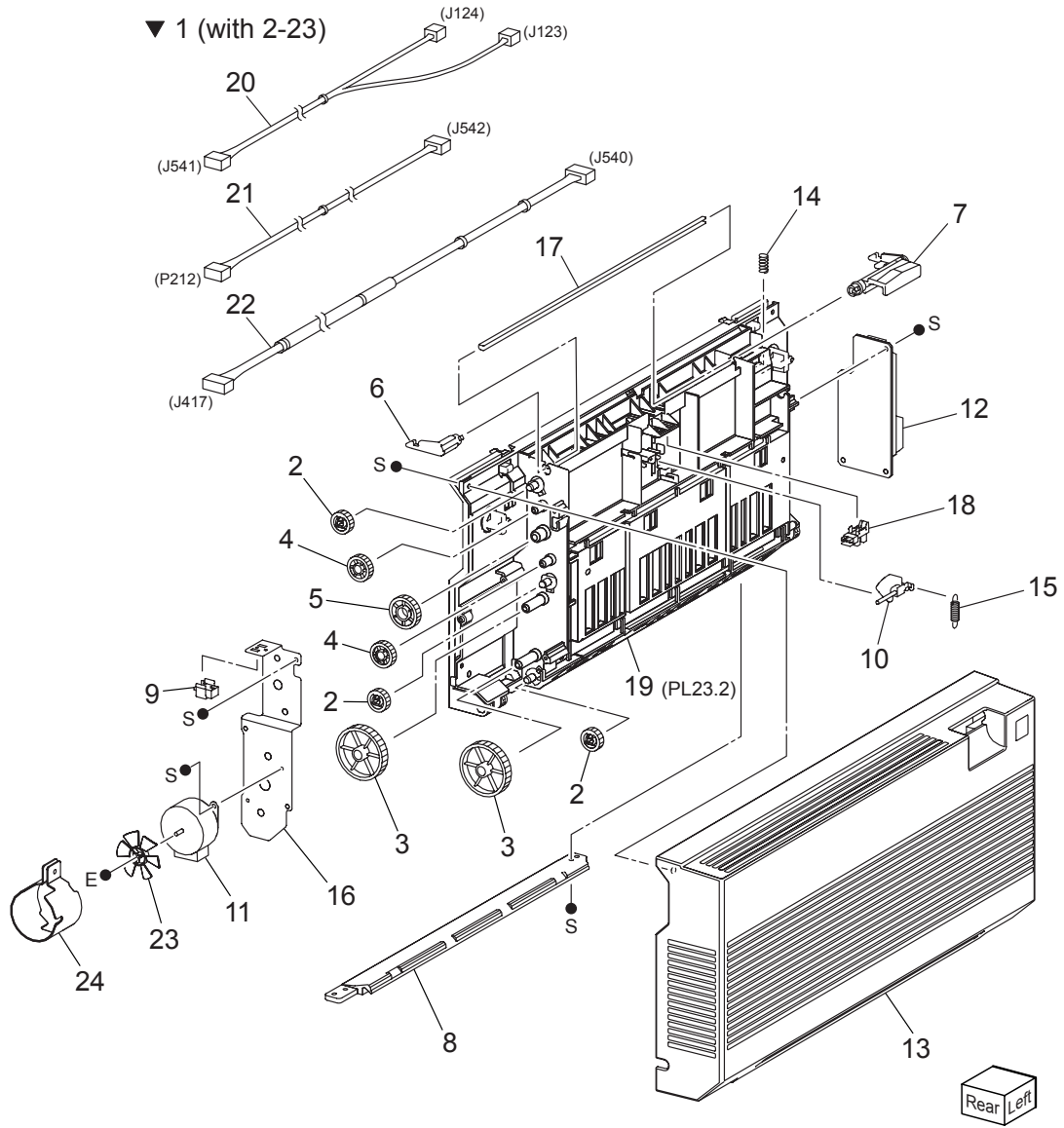


PL 22.8 Electrical

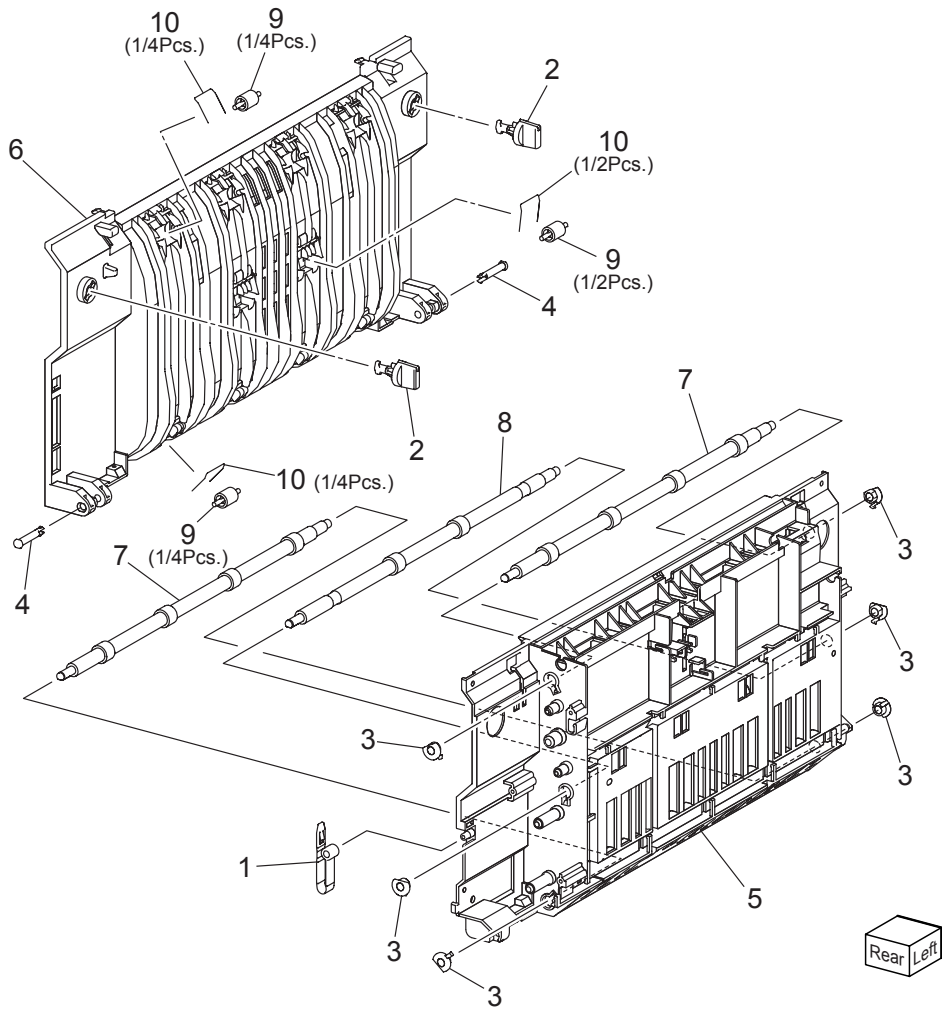


Duplex Unit

PL 23.1 Duplex Unit



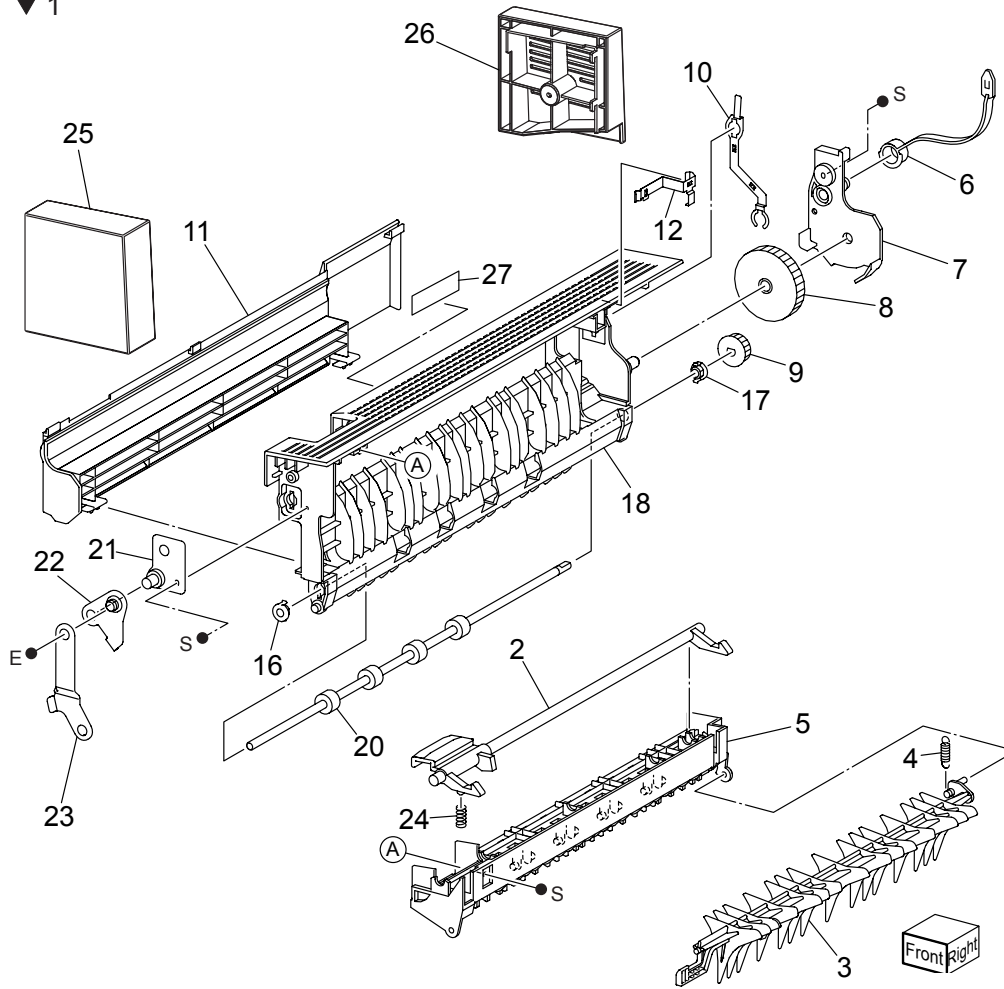
PL 23.2 Inner Chute Assembly



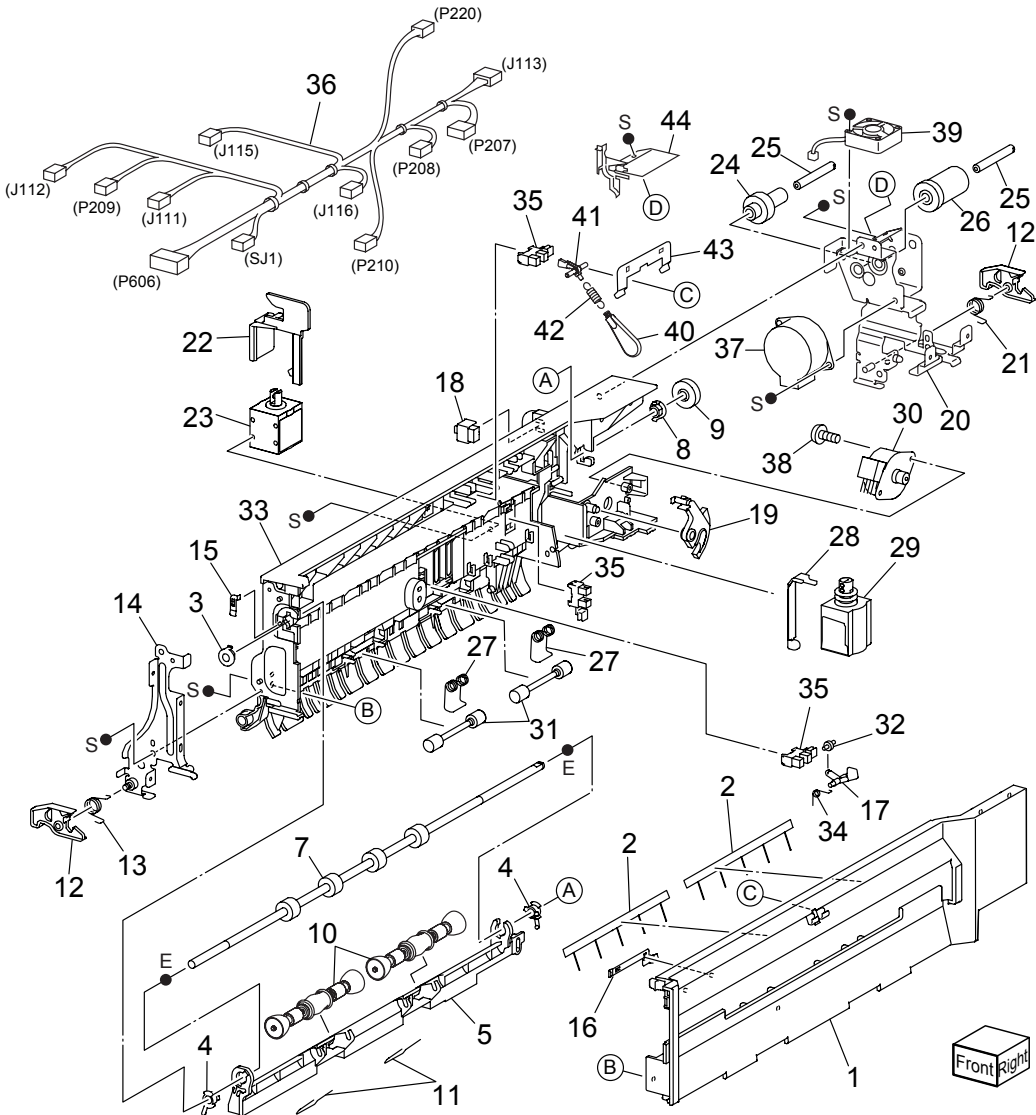
Exit 2

PL 24.1 L/H Upper Chute Assembly

▼ 1

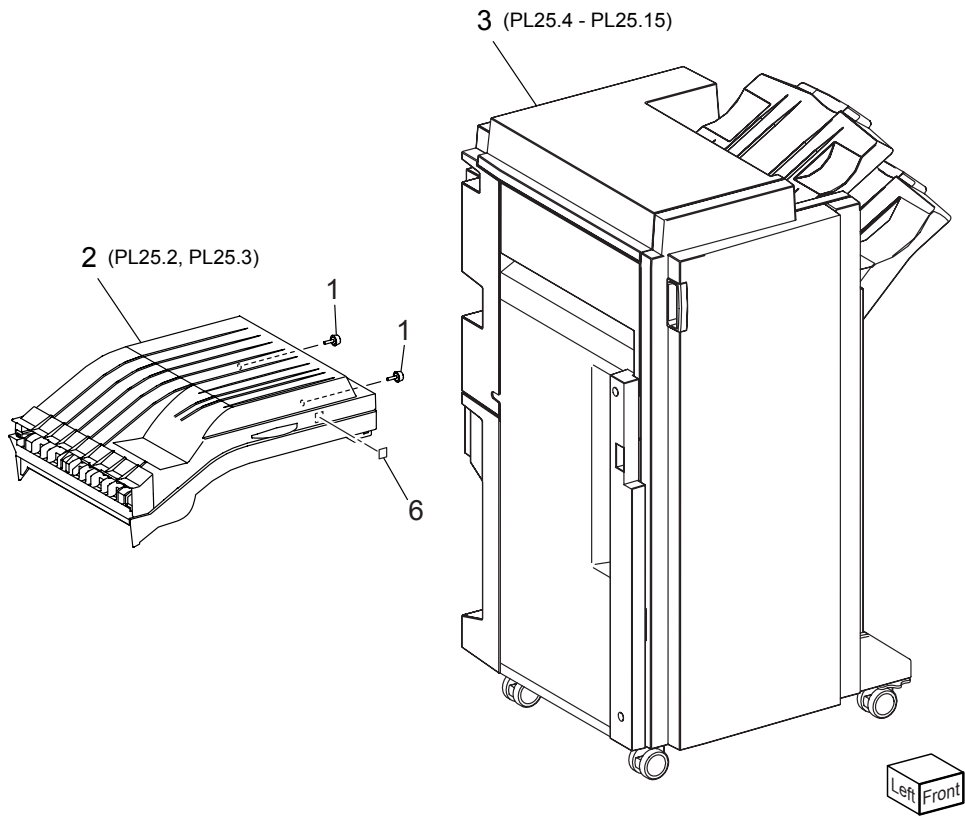


PL 24.2 Tray Guide Assembly



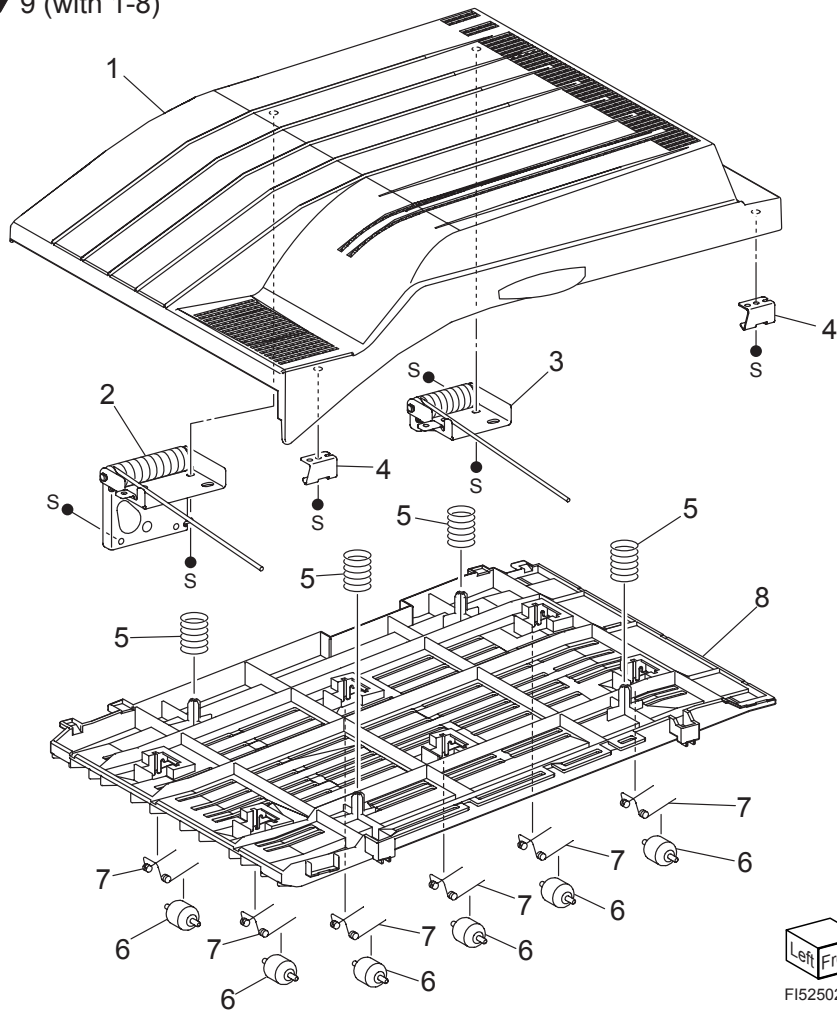
Finisher Unit

PL 25.1 Finisher Unit



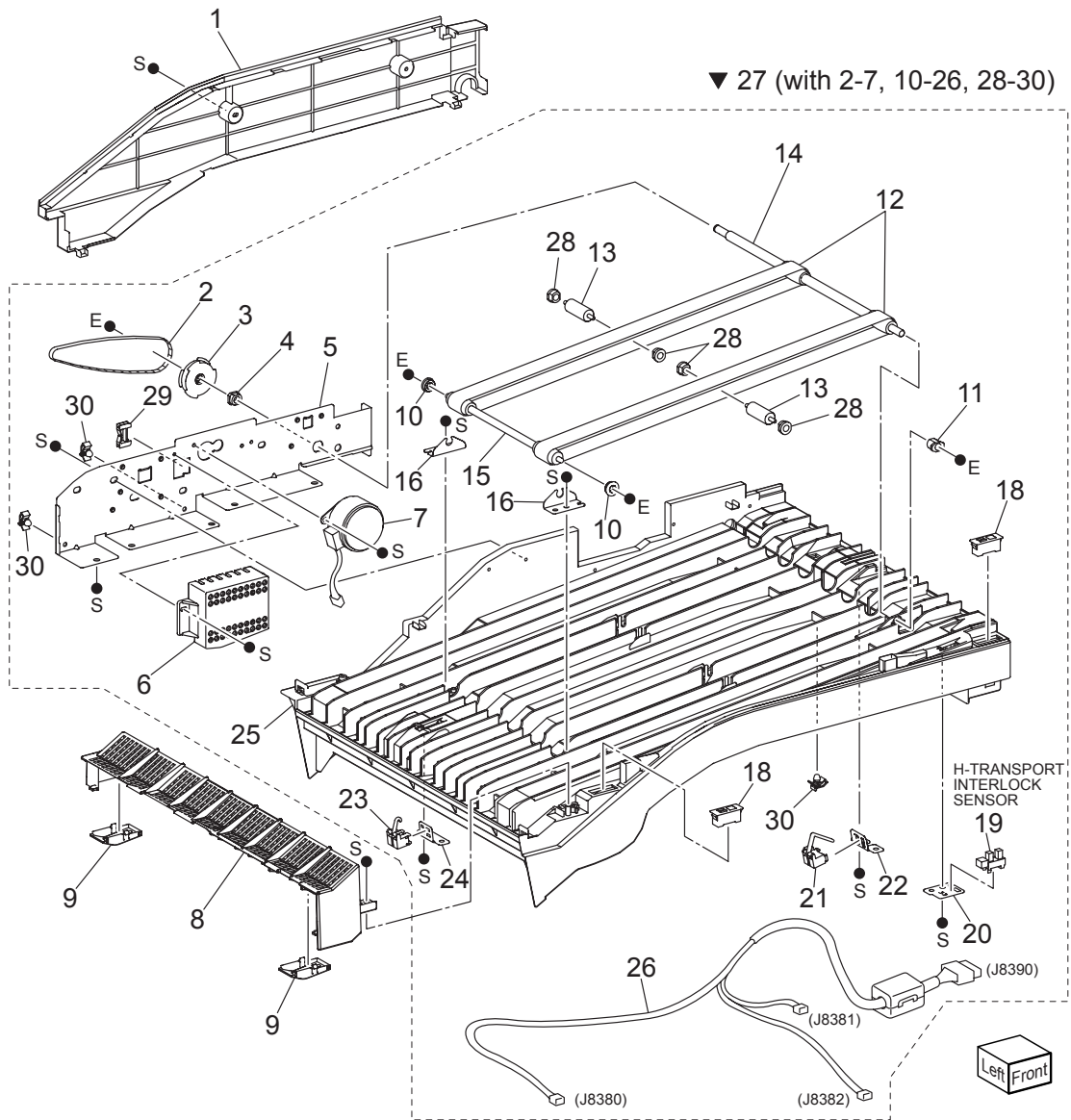
PL 25.2 H-Transport Assembly (1/2)

▼ 9 (with 1-8)

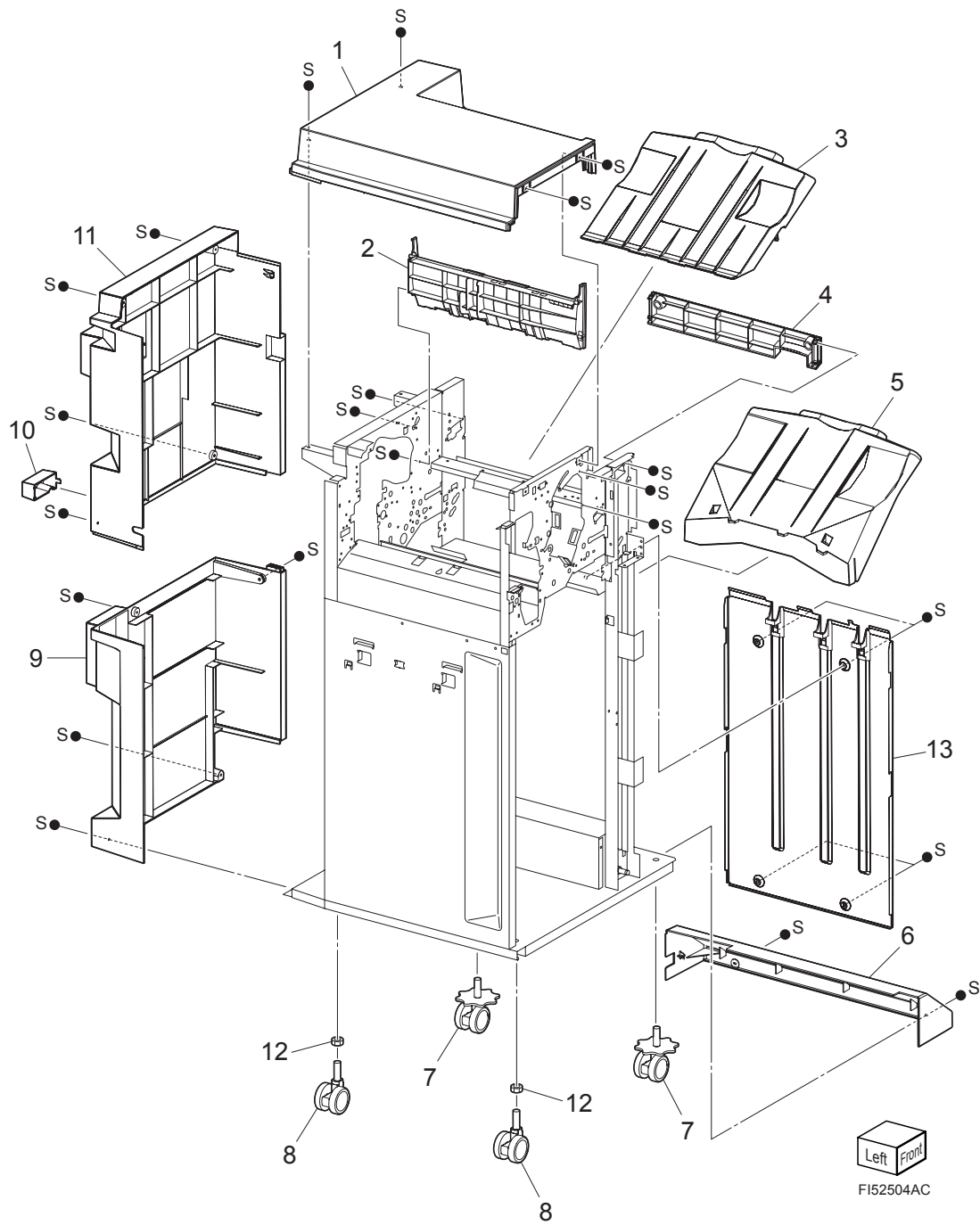


Left Front
FI52502AA

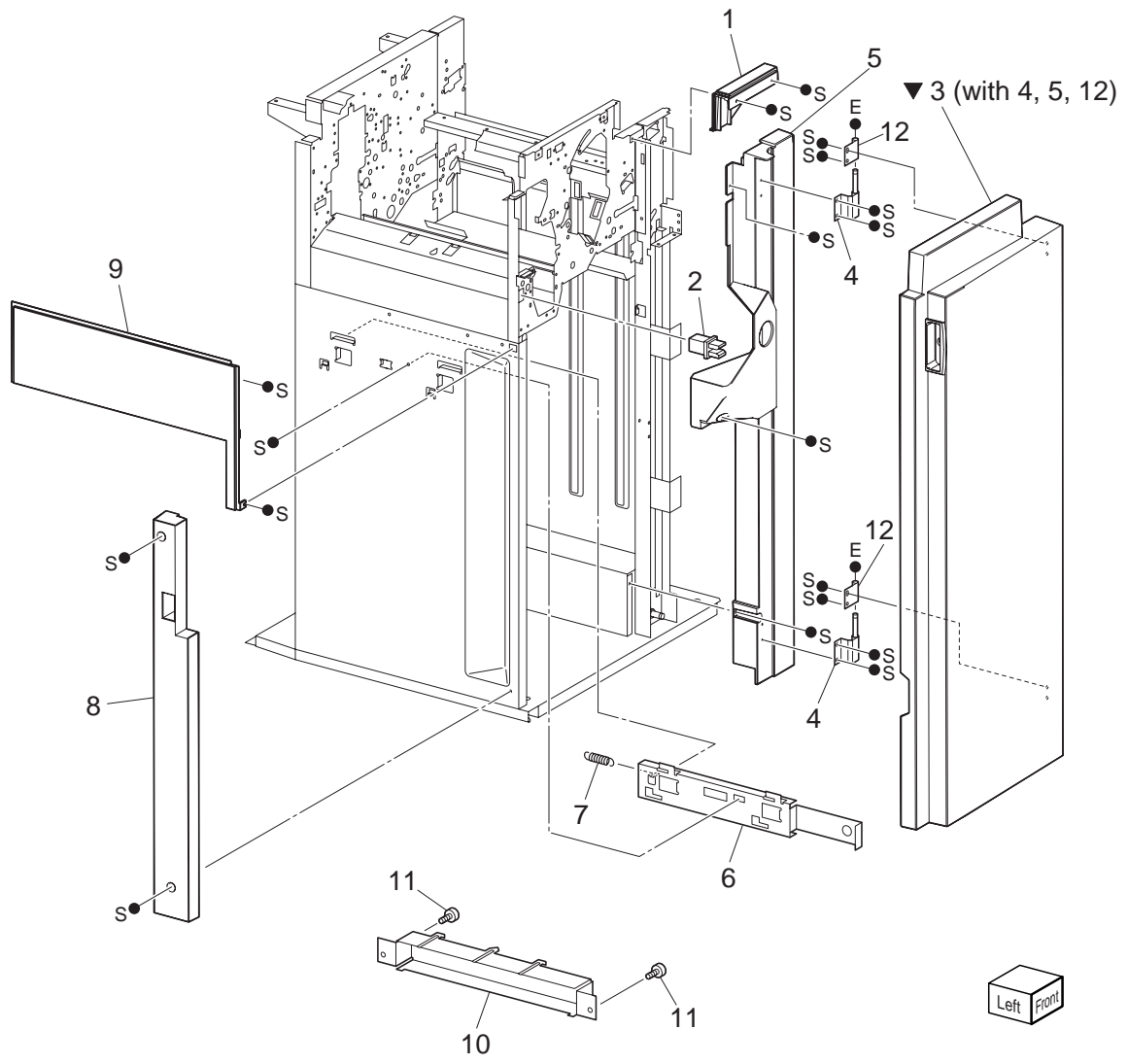
PL 25.3 H-Transport Assembly (2/2)



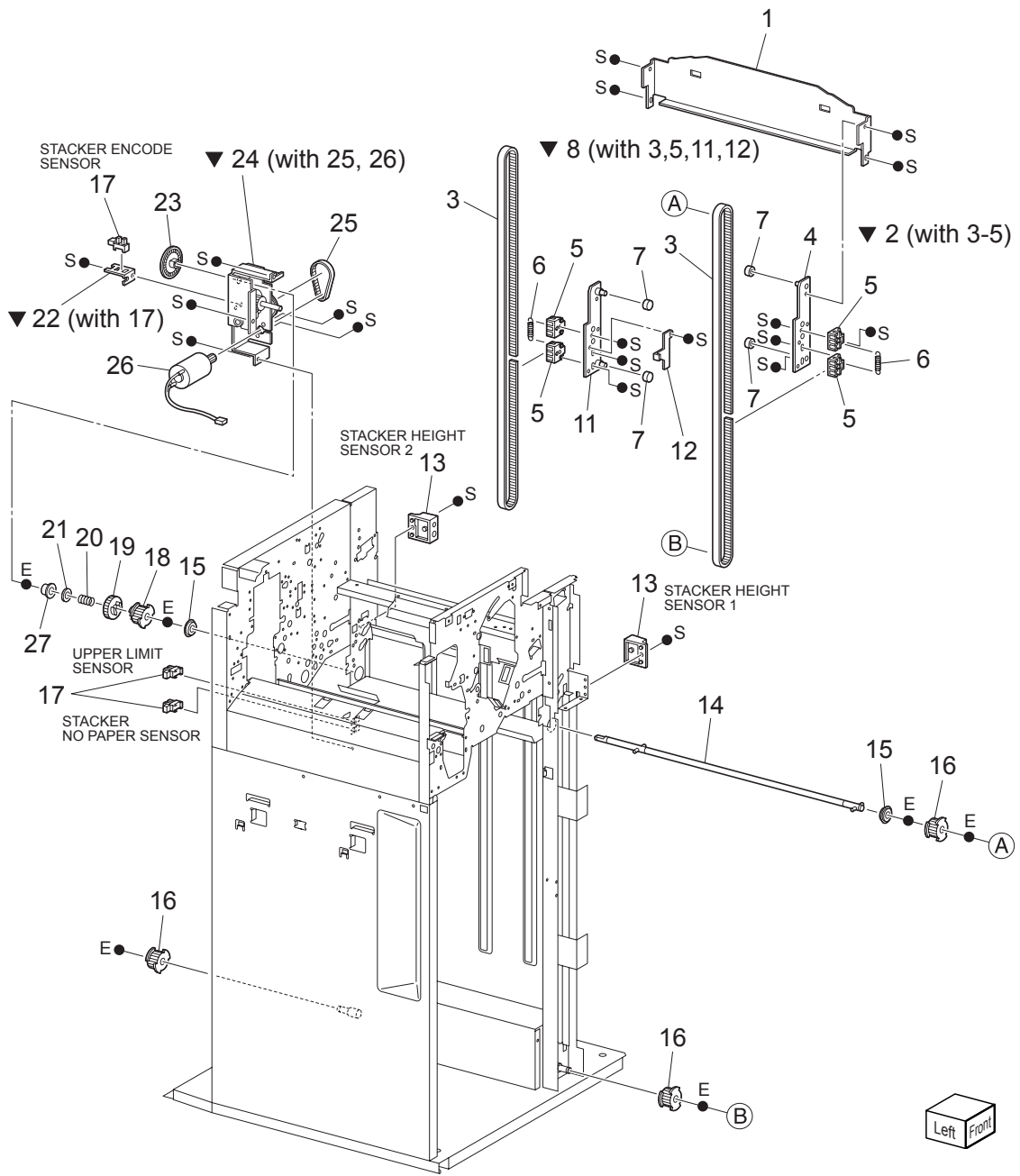
PL 25.4 Finisher Cover (1/2)



PL 25.5 Finisher Cover (2/2)

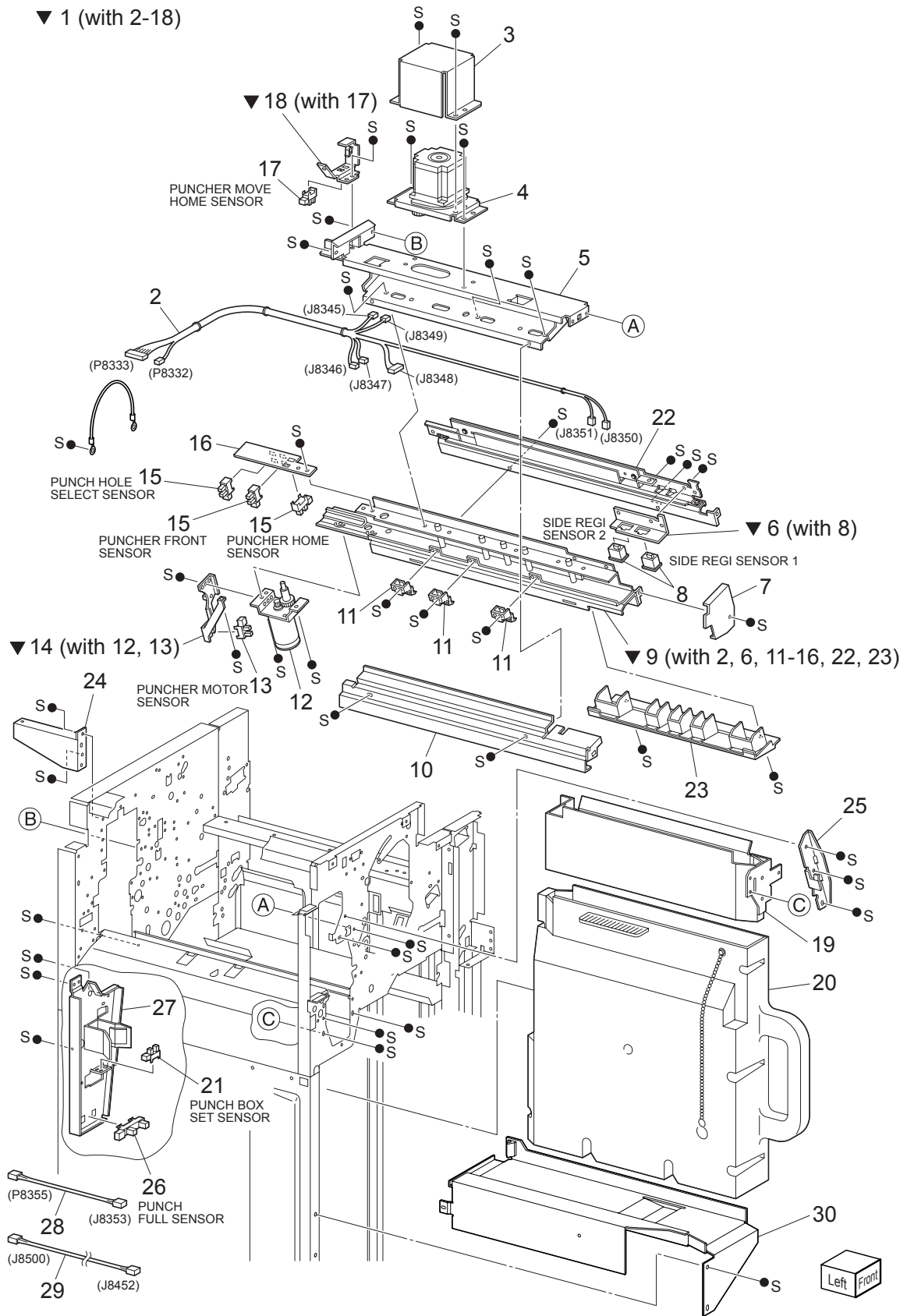


PL 25.6 Finisher Stack

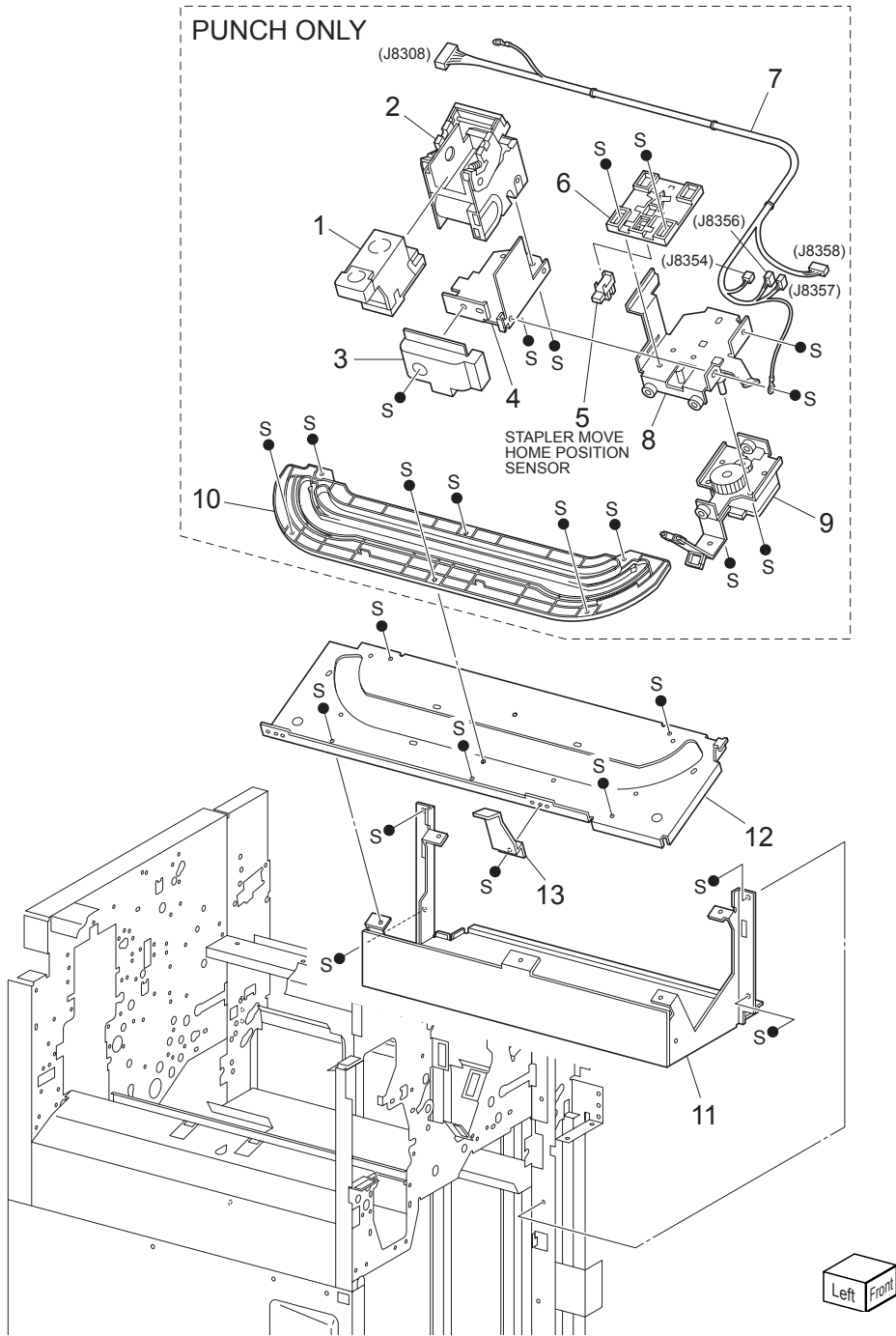


PL 25.7 Finisher Punch

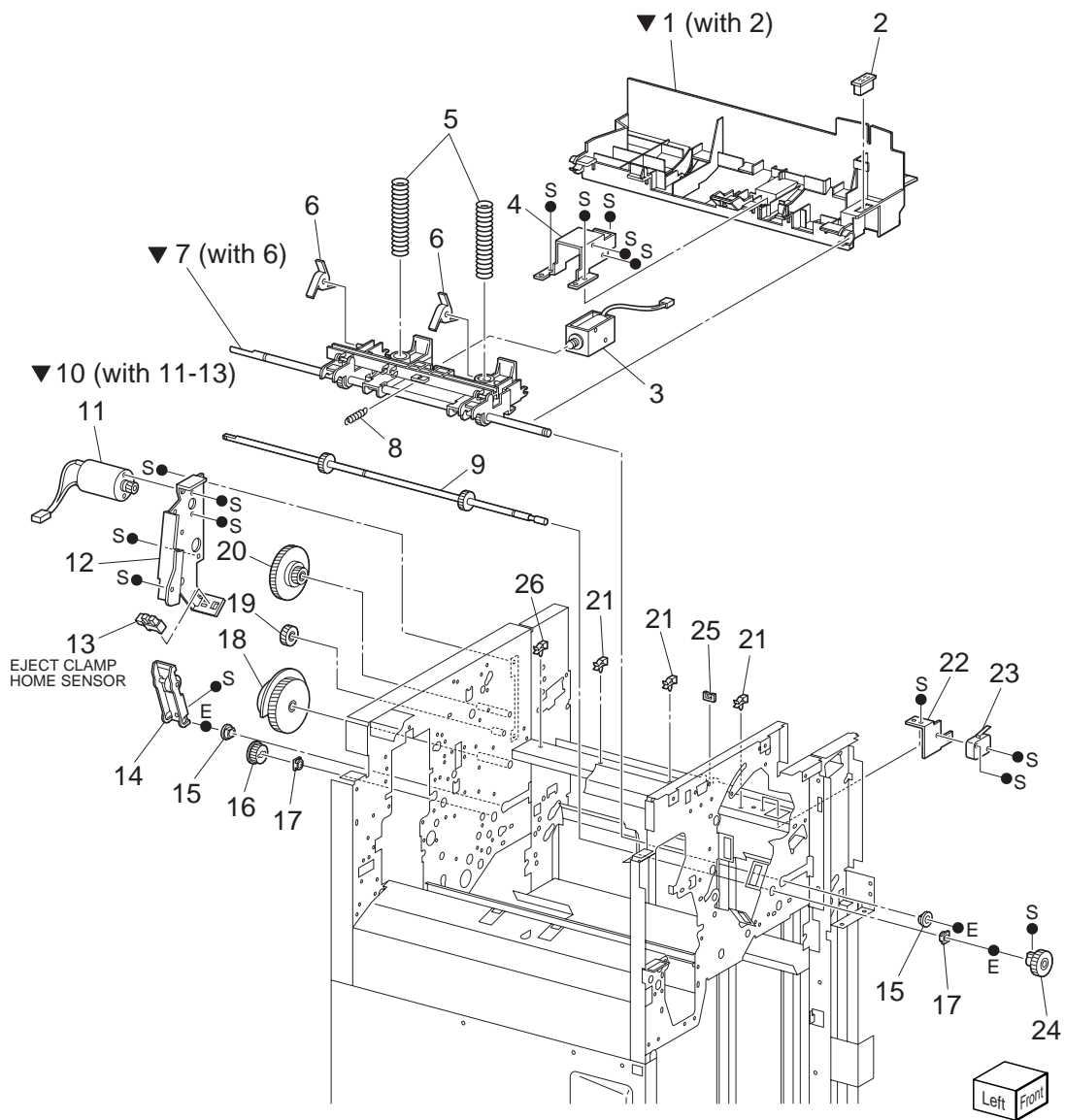
▼ 1 (with 2-18)



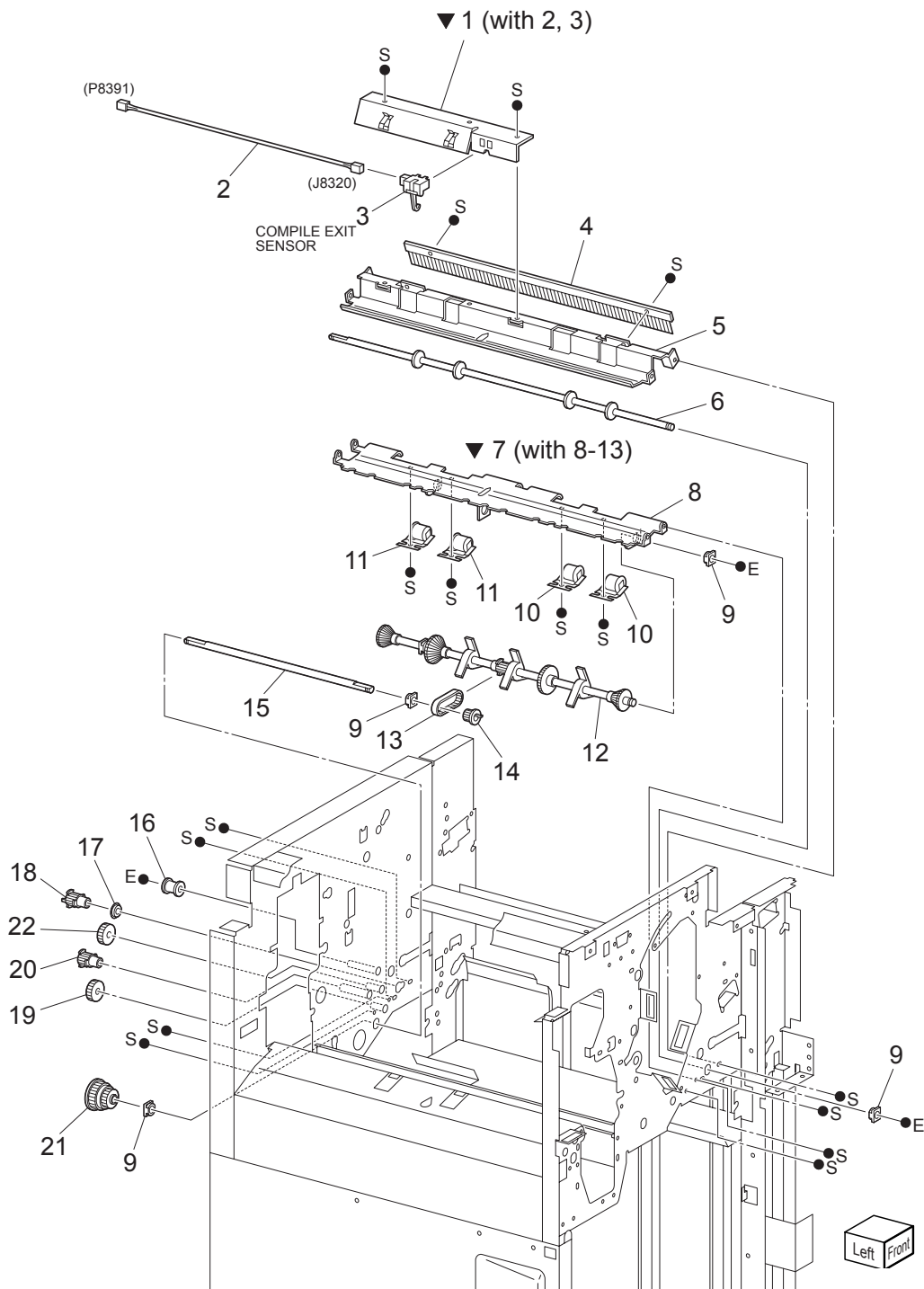
PL 25.8 Finisher Staple



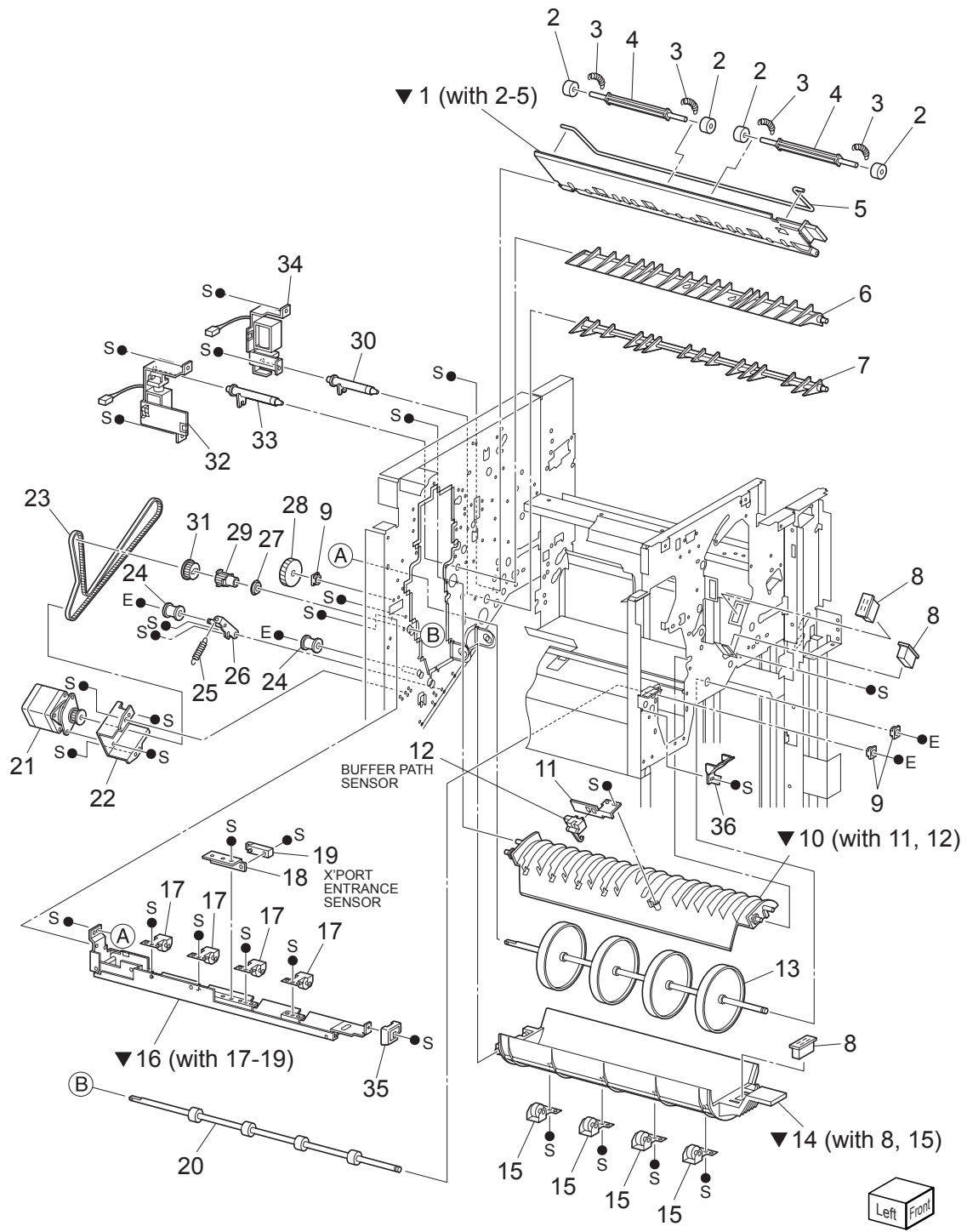
PL 25.9 Finisher Eject (1/3)



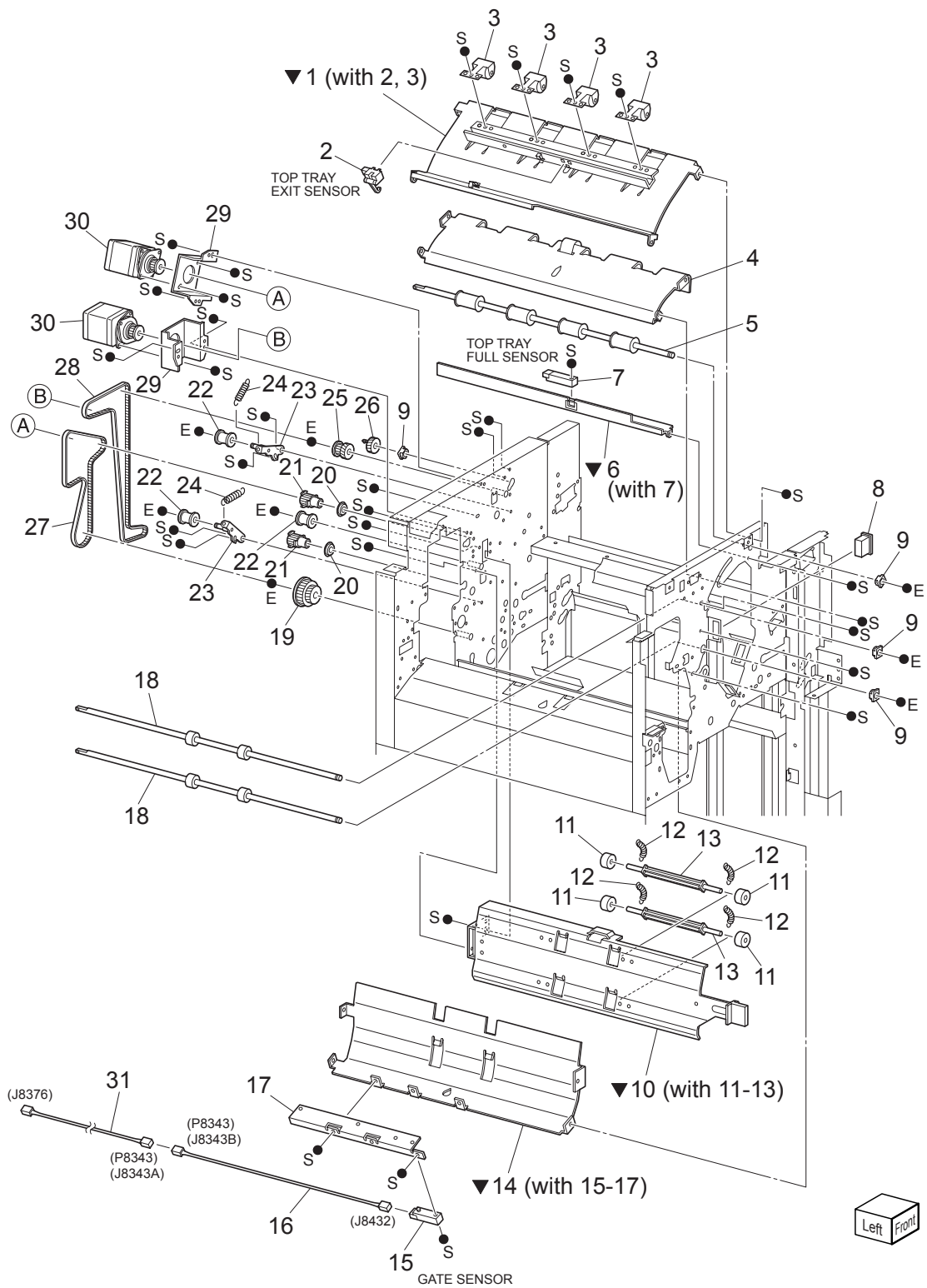
PL 25.11 Finisher Eject (3/3)



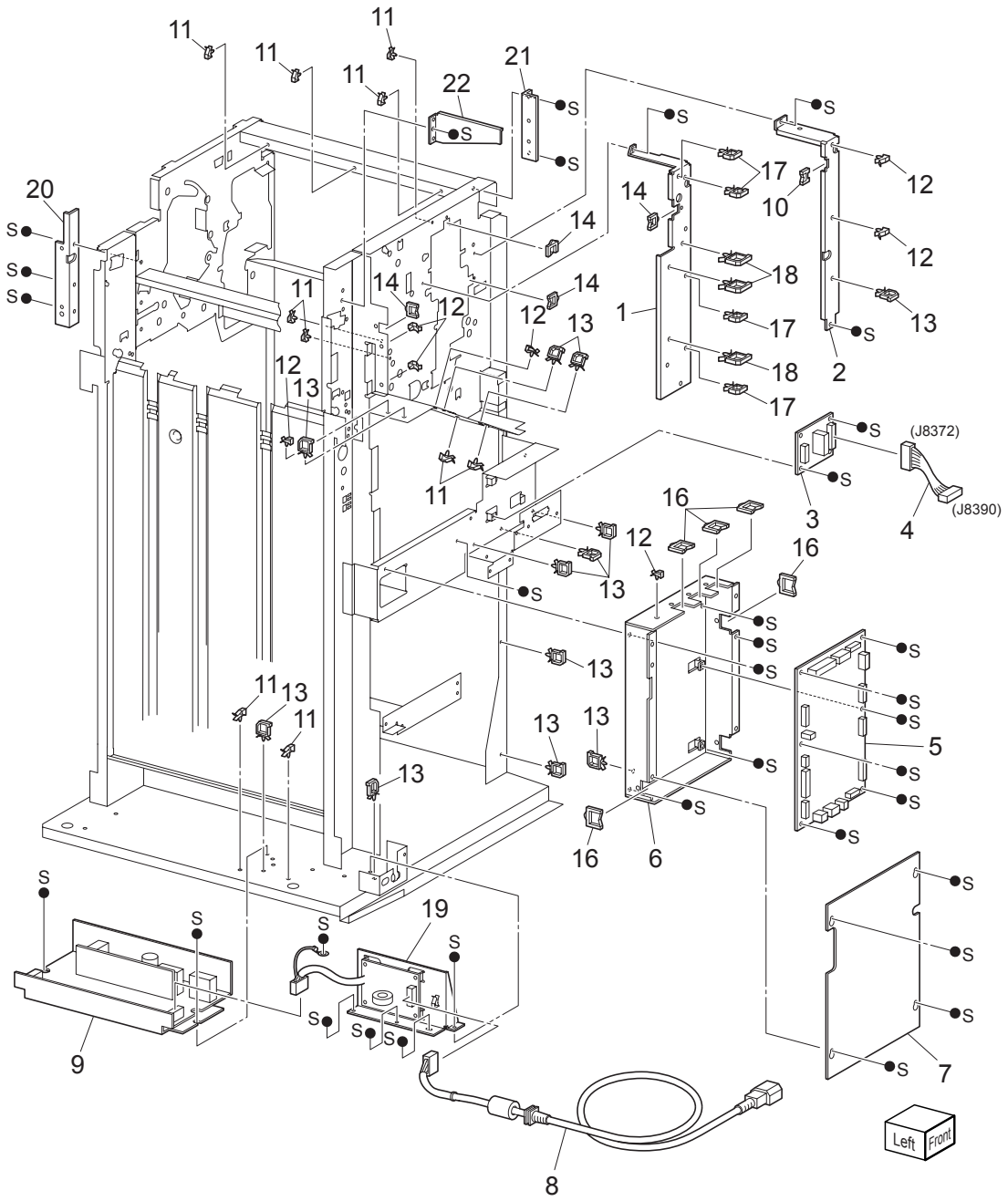
PL 25.12 Finisher Transport (1/2)



PL 25.13 Finisher Transport (2/2)



PL 25.14 Finisher Electrical



PL 25.15 Finisher Harness

